

PUBLIC LAND SURVEY MONUMENT RECORD

TYPE OF MONUMENT: HARRISON (BROKEN TOP)
 ADAMS COUNTY COORDINATES, NAD 83 (2007)

N. 218823.481

E. 528303.989

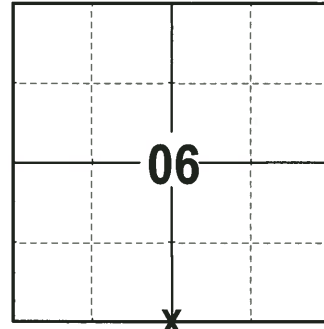
ELEVATION- DATUM

FIELD WORK DATE: 06/13/2017

BASIS FOR MONUMENT LOCATION

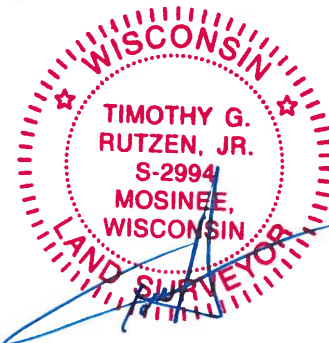
1979- PLS 1478 FOUND 1-1/4" IRON PIPE THAT FITS SURVEYS AND PLATS IN THE AREA. ACCEPTED AS QUARTER CORNER AND SET 4 WITNESSES.

2017 - PLS 2994 FOUND EXISTING HARRISON MONUMENT 10" BELOW THE ROAD SURFACE AND 1 WITNESS. THE MONUMENT AGREES WITH THE EXISTING WITNESS. ACCEPTED HARRISON AS CORNER LOCATION, SET 3 NEW TIES AND MEASURED TO A PROPERTY IRON.



LOCATION
 (INDICATE CORNER BY "X")

SEAL:



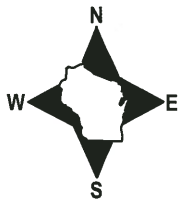
DATA SHOWN HERE ON THIS TIE SHEET IS CORRECT AND COMPLETE TO THE BEST OF MY KNOWLEDGE AND BELIEF.

PROFESSIONAL LAND SURVEYOR

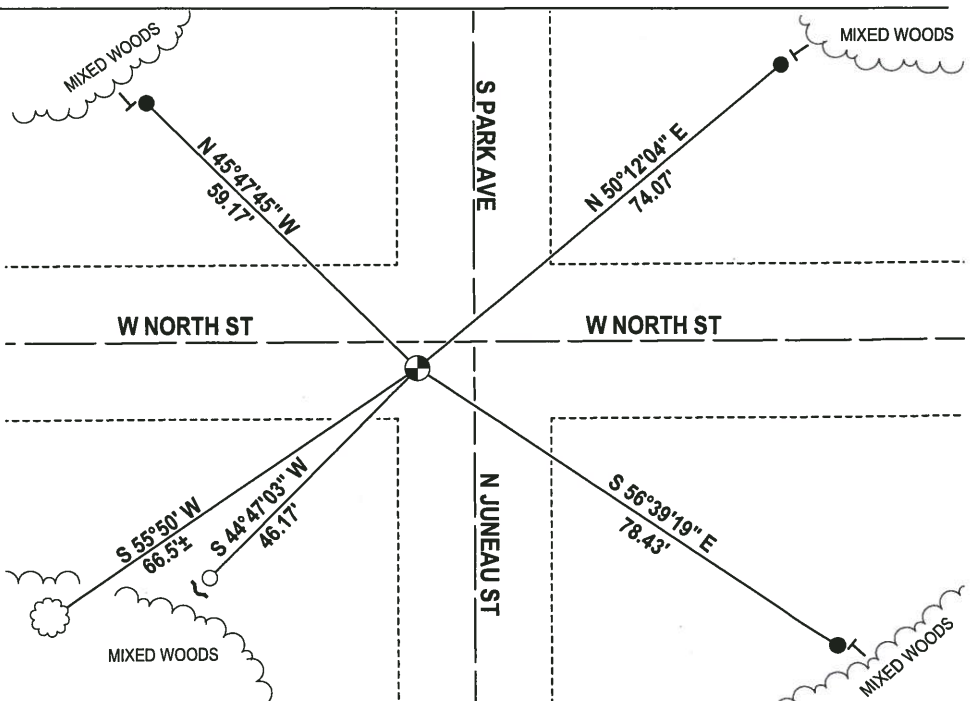
DATE 6/26/17

- TIE SKETCH

NOTE: THE CORNER FALLS 4± SOUTH OF THE CENTERLINE OF W NORTH ST.



- 3/4" x 18" IRON REBAR SET, 1.50#/FT
- 3/4" IRON ROD FOUND
- ⊕ HARRISON (BROKEN TOP) FOUND
- └ STEEL FENCE POST
- └ VINYL "T" POST
- ☼ WITNESS TREE FOUND



Government Land Corner Certificate

Adams County

TYPE OF MONUMENT: HARRISON STANDARD *Tape*

STATE PLANE COORDINATES: N _____
E _____

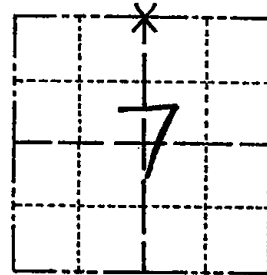
ELEVATION — M.S.L. DATUM: _____

THETA ANGLE: _____

FIELD BOOK: 83 PAGE 137

DRAWN BY: N.J.

CORNER NO. 22
SECTION 7
TOWN 17
RANGE 6



LOCATION
(Indicated by 'X')

BASIS FOR MONUMENT LOCATION

Show info such as: History of corner, with reference to Vol. and pg., dates, surveyor; exact description of monument replaced; if location computed, by taped or EDM traverse; landowner remarks, etc. (Use reverse side if necessary)

Found 1 1/4 inch iron pipe that fits surveys and plats in the area. Accepted as Quarter Corner.

Everything OK 9-16-85 GR.

OK 2-6-90

ALL OK 7/27/94 JG-TBS

2-CONE, 2-NEW, 3-21-05, JG
OK 2-10-10 '55

SEAL:



DATA SHOWN HERE ON
CERTIFIED CORRECT:

Gregory P. Rhinehart
Registered Land Surveyor

DATE: 12/21/79

TIE SKETCH

Show at least four ties, also fence lines, roads, topo, size and type of witness trees and if off road - best way to arrive at corner.

