

## PUBLIC LAND SURVEY MONUMENT RECORD

TYPE OF MONUMENT: HARRISON (BROKEN TOP)  
ADAMS COUNTY COORDINATES, NAD 83 (2007)

N. 218834.580

E. 533603.060

ELEVATION- \_\_\_\_\_ DATUM \_\_\_\_\_

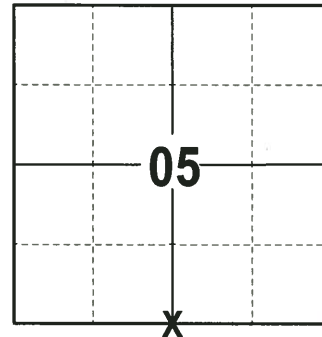
FIELD WORK DATE: 06/12/2017

### BASIS FOR MONUMENT LOCATION

1973- PLS 878 FOUND PK NAIL AT CORNER LOCATION, SET HARRISON MONUMENT.

1997- PLS (UNKNOWN) FOUND THE MONUMENT AT CORNER LOCATION SET MAG NAIL AND 4 TIES.

2017 - PLS 2994 FOUND HARRISON MONUMENT 12" BELOW THE ROAD SURFACE, AFTER REMOVING FOUND PK NAIL ON THE ROAD SURFACE. FOUND 5 TIES AND 2 PROPERTY IRONS. THE MONUMENT AGREES WITH THE EXISTING TIES AND PROPERTY IRONS USED AS TIES. ACCEPTED HARRISON AS CORNER LOCATION RE-MEASURED EXISTING TIES.



**LOCATION**  
(INDICATE CORNER BY "X")

SEAL:



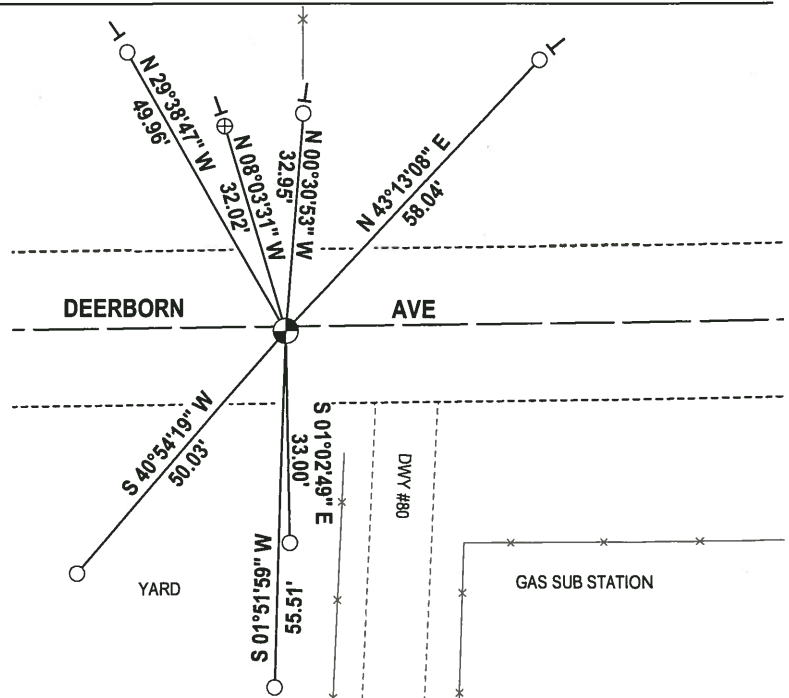
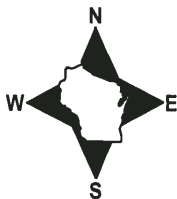
DATA SHOWN HERE ON THIS TIE SHEET IS CORRECT AND COMPLETE TO THE BEST OF MY KNOWLEDGE AND BELIEF.

PROFESSIONAL LAND SURVEYOR

DATE 6/26/17

### - TIE SKETCH

NOTE: THE CORNER FALLS 1½ SOUTH OF THE CENTERLINE OF DEERBORN AVE.



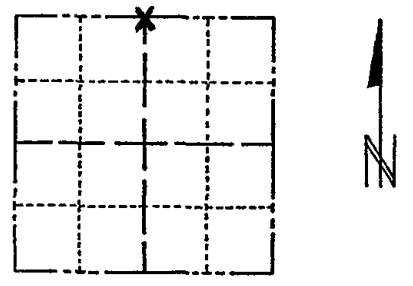
- 3/4" IRON ROD FOUND
- ⊕ ALUMINUM CAP IN CONCRETE FOUND
- ⊗ HARRISON FOUND
- └ VINYL "T" POST

# ADAMS COUNTY

## Survey Monument Record

CORNER NO. 156  
 SECTION 8  
 TOWN 17  
 RANGE 6

TYPE OF MONUMENT: 30" HARRISON MAG NAIL  
 STATE PLANE COORDINATES: N \_\_\_\_\_  
 E \_\_\_\_\_  
 ELEVATION — M.S.L. DATUM: \_\_\_\_\_  
 THETA ANGLE: \_\_\_\_\_  
 FIELD BOOK: 103 PAGE 147



LOCATION  
(Indicated by 'X')

SEAL:



SEE REVERSE FOR ADDITIONAL TIES

### BASIS FOR MONUMENT LOCATION

(Use reverse side if necessary)

Show info such as: History of corner, with reference to Vol. and pg, dates, surveyor; exact description of monument replaced; if location computed, by taped or EDM traverse; landowner remarks, etc.

Found PK nail and set monument  
 8'K 20' from Reference Mon.  
 July 24, 1972

Anthony B. Kiedrowski R.L.S. 878

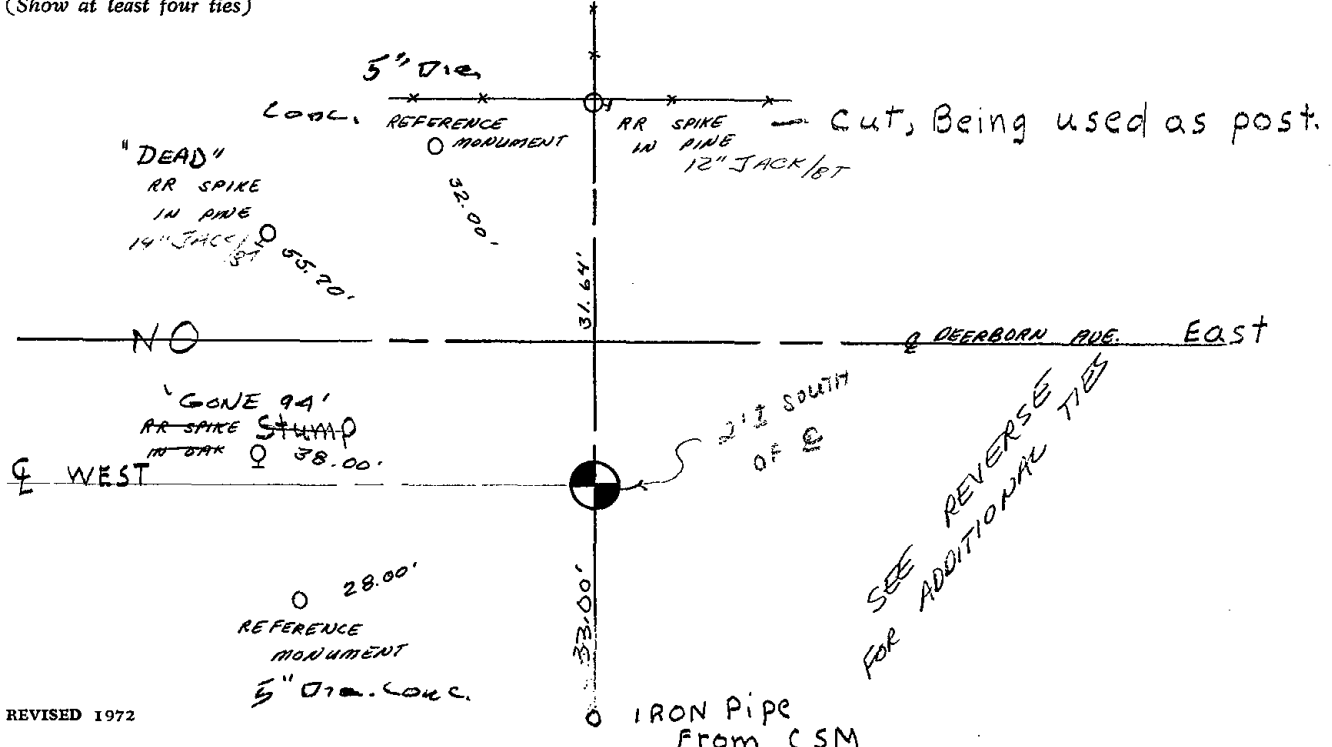
COR. OLD 10-11-75 ES  
 COR. BEARS 1/23/80 RN-SS  
 9-16-85 GR  
 ALL OK 2-6-90 KZ-CAR  
 1-GONE, 1-NEW 7/27/94 JG-B5

CERTIFIED CORRECT:

*Anthony B. Kiedrowski*  
 Registered Land Surveyor  
 DATE: 2-1-73

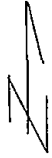
### TIE SKETCH

(Show at least four ties)

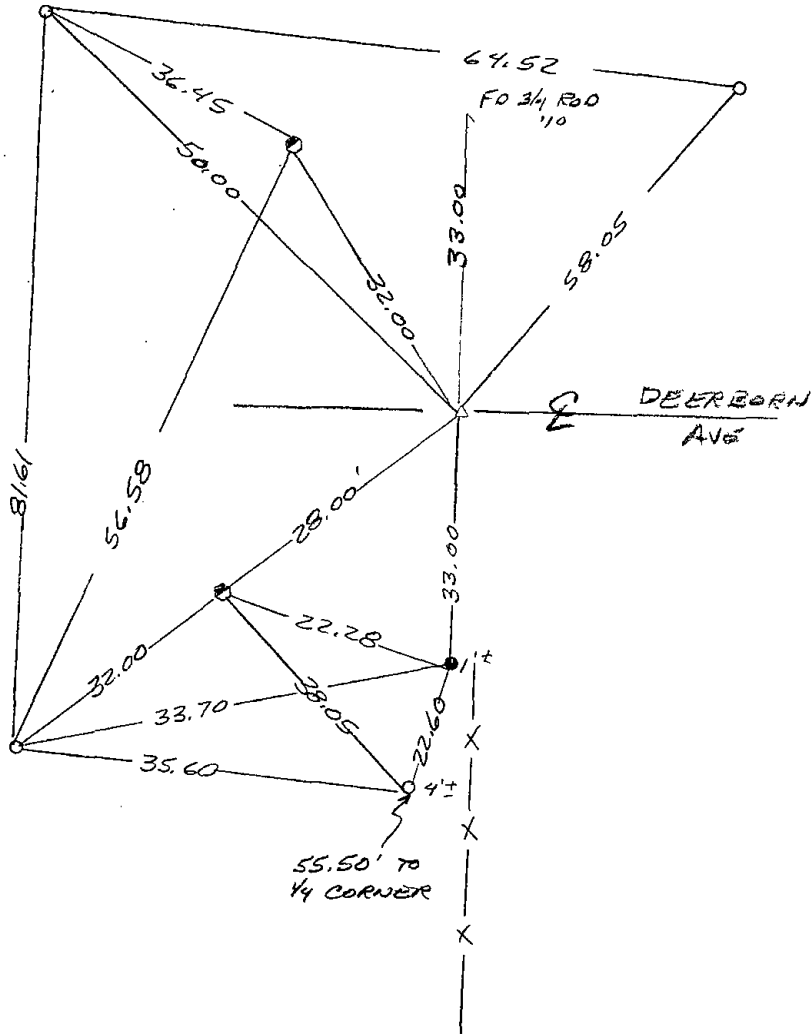


SEE REVERSE FOR ADDITIONAL TIES

4-15-97



- △ = MAG NAIL
- ⊙ = EXISTING CONC. MON.
- = EXISTING 3/4" ROD
- = SET 3/4" x 24" IRON ROD



ALL OK, 2-10-00, J6-B2

OK 1-24-05-JL

OK 1-21-10 SS