

05 SECTION 17 TOWN 06 RANGE

ADAMS COUNTY

COUNTY CORNER NO: 25

ROMPORTOL ID: 41706050000

PUBLIC LAND SURVEY MONUMENT RECORD

TYPE OF MONUMENT: HARRISON
 ADAMS COUNTY COORDINATES, NAD 83 (2007)

N. 218843.474

E. 536259.915

ELEVATION- DATUM

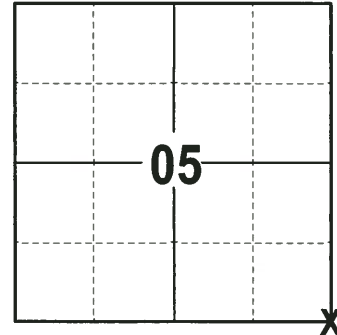
FIELD WORK DATE: 06/07/2017

BASIS FOR MONUMENT LOCATION

1978 - PLS 878 FOUND NO SURVEY RECORDS. EXCAVATED WITH A BACKHOE AT CORNER LOCATION AND FOUND 8"x10"x39" SANDSTONE 15" DOWN WITH A HOLE DRILLED INTO IT AND A CROSS CUT. LOWERED STONE AND SET HARRISON MONUMENT ON TOP.

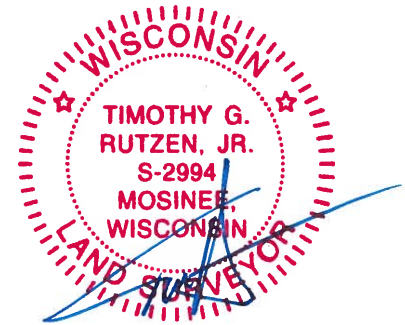
1997 - PLS (UNKNOWN) FOUND HARRISON MONUMENT AND 1 PROPERTY IRON USED AS TIE. SET 3 NEW TIES.

2017 - PLS 2994 FOUND HARRISON MONUMENT 6" BELOW THE SURFACE AND 3 TIES. THE MONUMENT AGREES WITH THE EXISTING TIES. ACCEPTED HARRISON AS CORNER LOCATION, SET 1 NEW TIE AND RE-MEASURED TO EXISTING TIES.



LOCATION
 (INDICATE CORNER BY "X")

SEAL:



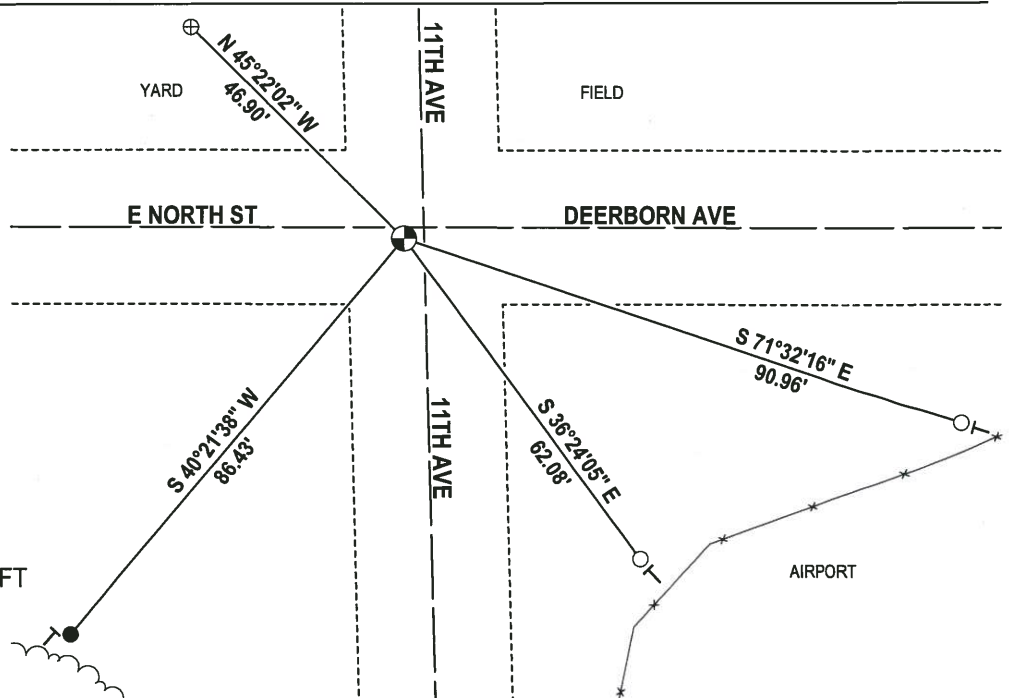
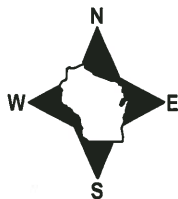
DATA SHOWN HERE ON THIS TIE SHEET IS CORRECT AND COMPLETE TO THE BEST OF MY KNOWLEDGE AND BELIEF.

PROFESSIONAL LAND SURVEYOR

DATE 6/26/17

- TIE SKETCH

NOTE: THE CORNER FALLS 2± SOUTH OF THE CENTERLINE OF E NORTH ST & DEERBORN AVE, AND 3± WEST OF THE CENTERLINE OF 11TH AVE.

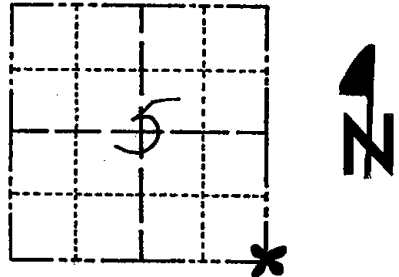


- 3/4" x 18" IRON REBAR SET, 1.50#/FT
- 3/4" IRON ROD FOUND
- ⊕ 1-1/4" O.D. IRON PIPE FOUND
- ⊙ HARRISON FOUND
- └ VINYL "T" POST

Government Land Corner Certificate

ADAMS County
 TYPE OF MONUMENT: HARRISON
 STATE PLANE COORDINATES: N _____
 E _____
 ELEVATION — M.S.L. DATUM: _____
 THETA ANGLE: _____
 FIELD BOOK: 54 (101) PAGE 43 (127)
 DRAWN BY: B. MERZ

CORNER NO. 25
 SECTION 5
 TOWN 17
 RANGE 6



LOCATION
 (Indicated by 'X')

BASIS FOR MONUMENT LOCATION

Show info such as: History of corner, with reference to Vol. and pg., dates, surveyor; exact description of monument replaced; if location computed, by taped or EDM traverse; landowner remarks, etc. (Use reverse side if necessary)

Excavated with backhoe. Found 8x10x39" sandstone down 15". Stone had a drill hole in it and a cross cut as shown. Lowered stone and set Harrison monument on top. No resurvey records. Dug 6' x 10' x 2' deep hole.

SEE REVERSE FOR ADDITIONAL TIES

SEAL:



DATA SHOWN HERE ON CERTIFIED CORRECT:

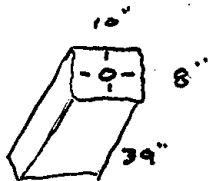
Anthony B. Kiedrowski
 Registered Land Surveyor

DATE: 6/27/78

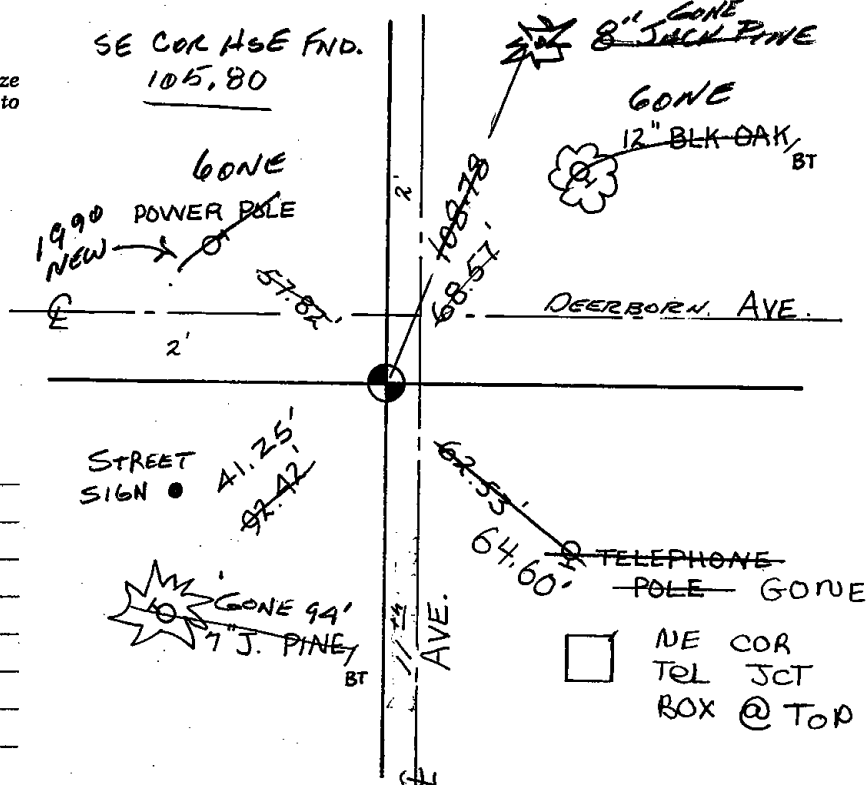
TIE SKETCH

Show at least four ties, also fence lines, roads, topo, size and type of witness trees' and if off road - best way to arrive at corner.

Ties are to nail and disc.



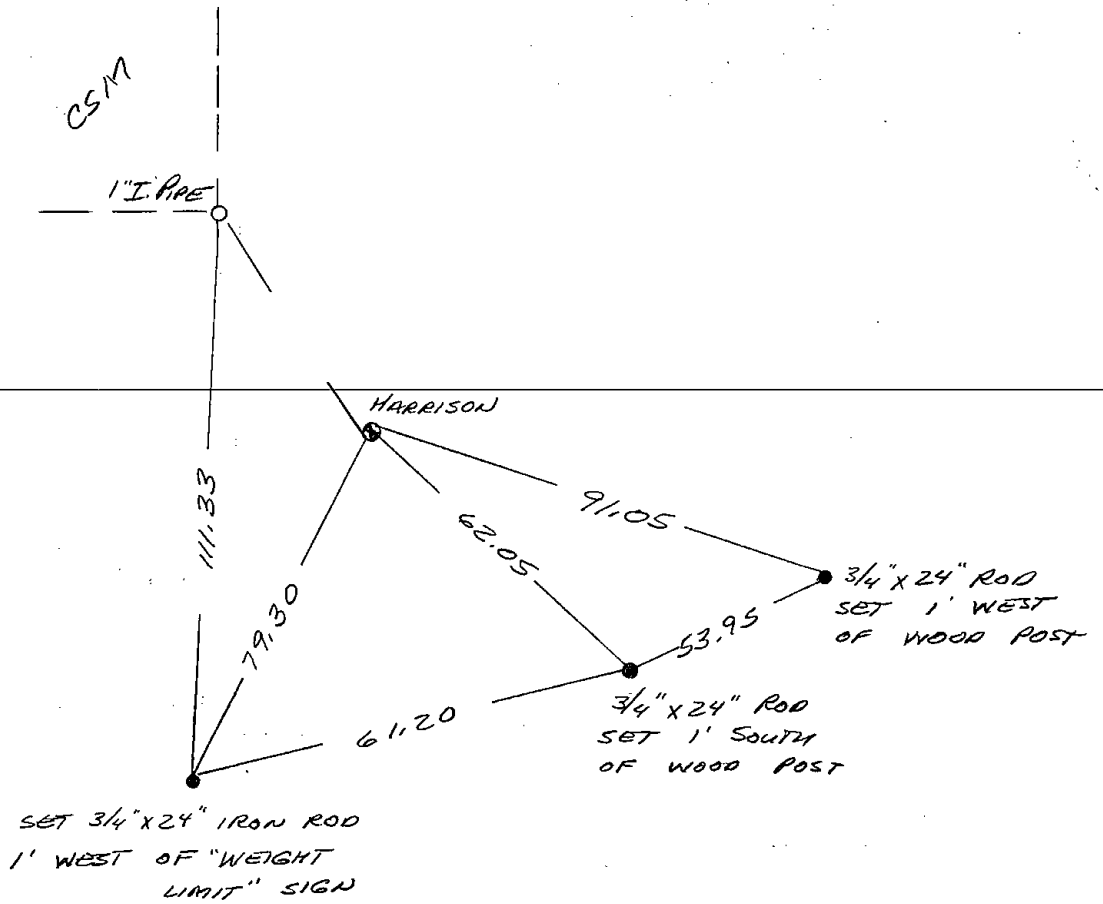
Stone Found



MAINTENANCE RECORD

Date	Init.	Remarks
1/23/80	RN-SS	OK
7-12-85	DK-SS	1 NEW 1 GONE
2-6-90	KL-GR	2 GONE 2 NEW
7-27-94	JG-BB	1-GONE 1-NEW
1-24-05	SG	1-GONE

4-15-97



ALL OK, 2-10-00, JG-BZ
OK 1-20-10 SS