

02
SECTION

17
TOWN

06
RANGE

ADAMS COUNTY

COUNTY CORNER NO: 31
ROMPORTOL ID: 41706020000

PUBLIC LAND SURVEY MONUMENT RECORD

TYPE OF MONUMENT: HARRISON
ADAMS COUNTY COORDINATES, NAD 83 (2007)

N. 218872.152

E. 552116.616

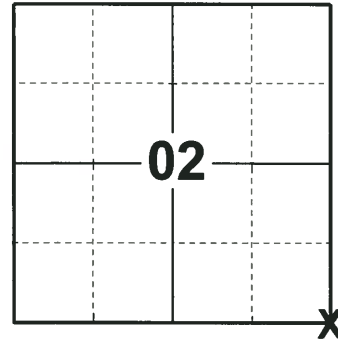
ELEVATION- _____ DATUM _____

FIELD WORK DATE: 08/06/2018

BASIS FOR MONUMENT LOCATION

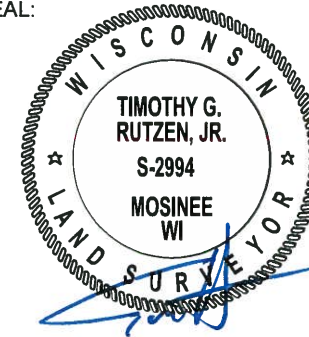
1974 - PLS 878 THIS CORNER WAS PREVIOUSLY MARKED BY A NUMBER OF OTHER SURVEYS AND FOUND NO LESS THAN SEVEN POSSIBILITIES IN A RADIUS OF ABOUT 50 FEET. THIS CORNER IS A PRIME EXAMPLE OF WHY SURVEYS SHOULD BE MONUMENTED AND RECORDED. RE-RAN THE SECTION AND FOUND THAT THE CORNER MARKED BY PERRY-CARRINGTON WAS MOST NEARLY CORRECT AND MONUMENTED THAT POINT. THIS CORNER WAS PREVIOUSLY MARKED BY A PIDDLEY LITTLE SPIKE. SET A HARRISON MONUMENT AT THE ACCEPTED CORNER LOCATION AND TIED OUT.

2018 - PLS 2994 FOUND A HARRISON MONUMENT 2" BELOW THE ROAD SURFACE. FOUND NO EVIDENCE OF ANY OF THE EXISTING TIES OR WITNESSES. ACCEPTED THE HARRISON MONUMENT AS THE BEST EVIDENCE OF THE CORNER LOCATION. SET 4 NEW TIES AND MEASURED TO THE TIES.



LOCATION
(INDICATE CORNER BY "X")

SEAL:



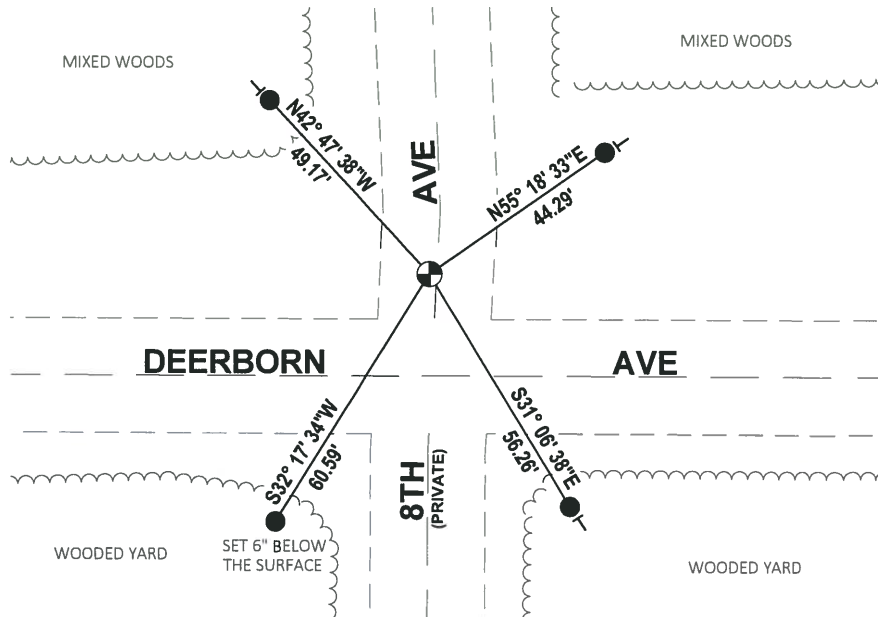
DATA SHOWN HERE ON THIS TIE SHEET IS CORRECT AND COMPLETE TO THE BEST OF MY KNOWLEDGE AND BELIEF.

PROFESSIONAL LAND SURVEYOR

DATE 8-30-18

TIE SKETCH

NOTE: THE CORNER FALLS 1'± WEST OF THE CENTERLINE OF 8TH AVE AND 21'± NORTH OF THE CENTERLINE OF DEERBORN AVE.



- SET 3/4" x 18" IRON REBAR, 1.50#/FT
- ⊙ FOUND HARRISON MONUMENT
- VINYL "T" POST

ADAMS COUNTY

Survey Monument Record

TYPE OF MONUMENT: Harrison Standard

STATE PLANE COORDINATES: N _____

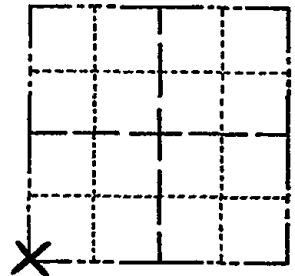
E _____

ELEVATION — M.S.L. DATUM: _____

THETA ANGLE: _____

FIELD BOOK: _____ PAGE _____

CORNER NO. 404⁽³¹⁾
SECTION 1
TOWN 17
RANGE 6



LOCATION
(Indicated by 'X')

SEAL:

BASIS FOR MONUMENT LOCATION

(Use reverse side if necessary)

Show info such as: History of corner, with reference to Vol. and pg, dates, surveyor; exact description of monument replaced; if location computed, by taped or EDM traverse; landowner remarks, etc.

This corner was previously marked by a number of other surveys and I found no less than seven possibilities in a radius of about 50 feet. This corner is a prime example of why surveys should be monumented and recorded. I re-ran the section and found that the corner marked by Perry-Carrington was most nearly correct and monumented that point. This corner was previously marked by a piddley little spike.

COR. O.K. 9-20-75 SS
COR. BEEPS 11/23/80 RN-SS

See Reverse
SIDE

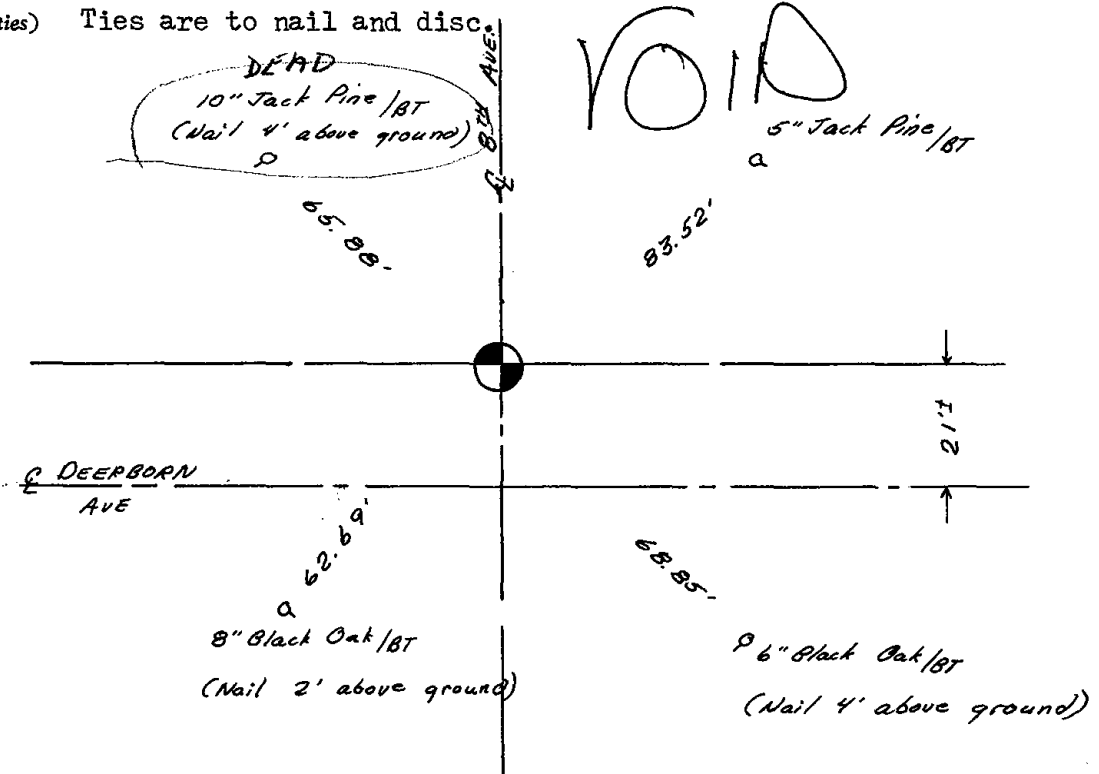
CERTIFIED CORRECT:

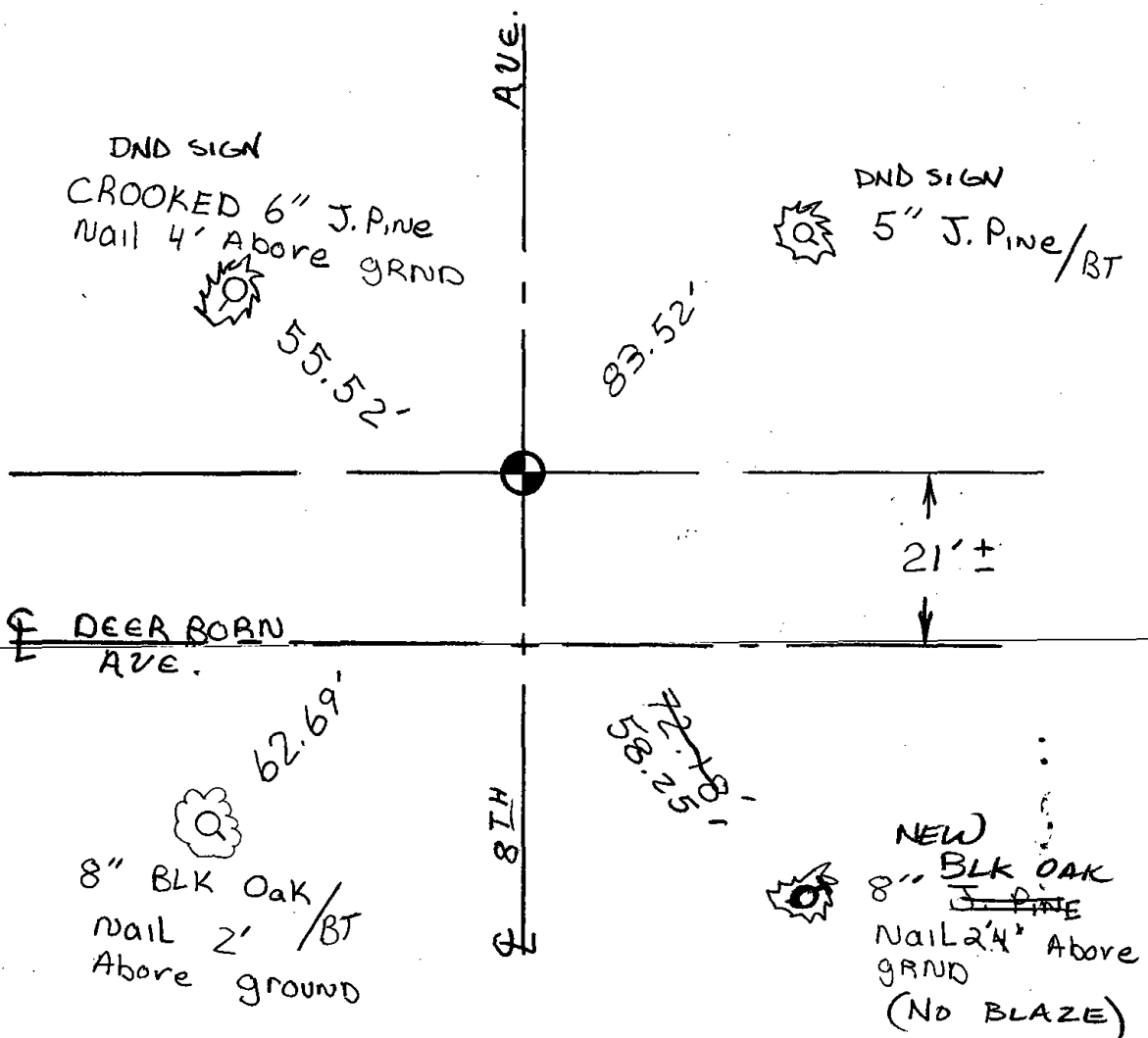
Anthony J. Kecherowski
Registered Land Surveyor

DATE: June 14, 1974

TIE SKETCH

(Show at least four ties) Ties are to nail and disc.





COR OK 7-12-85 DK-SS
 OK 2-6-90 KZ-GR.
 ALL OK 7-28-94 JG-PBS
 ALL OK 1-6-00, JG
 1-GONE, 1-NEW, 1-24-05-JG
 2-4-10 SS