

07 SECTION 17 TOWN 06 RANGE

ADAMS COUNTY

COUNTY CORNER NO: 35

ROMPORTOL ID: 41706072000

PUBLIC LAND SURVEY MONUMENT RECORD

TYPE OF MONUMENT: 1/2" DRILL HOLE
 ADAMS COUNTY COORDINATES, NAD 83 (2007)

N. 216179.916

E. 531002.211

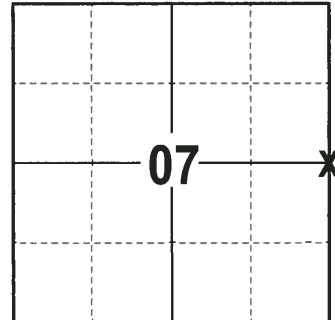
ELEVATION- DATUM

FIELD WORK DATE: 06/14/2017

BASIS FOR MONUMENT LOCATION

1974- PLS 1103 RE-ESTABLISHED QUARTER CORNER BY RETRACEMENT OF WARNER AND MCCONICK SUBDIVISION AND CHECKING INTO HOMEWOOD SUBDIVISION. DID NOT ATTEMPT EXCAVATION BECAUSE CORNER FALLS ON STATE TRUCK HIGHWAY 13, WHICH HAS A CONCRETE BASE.

2017 - PLS 2994 FOUND 1/2" DRILL HOLE IN CONCRETE, 3 TIES AND 1 WITNESS. THE MONUMENT AGREES WITH THE EXISTING TIES AND WITNESS. ACCEPTED 1/2" DRILL HOLE AS CORNER LOCATION, SET 3 NEW TIES AND RE-MEASURED TO EXISTING TIES AND WITNESS.



LOCATION
 (INDICATE CORNER BY "X")

SEAL:



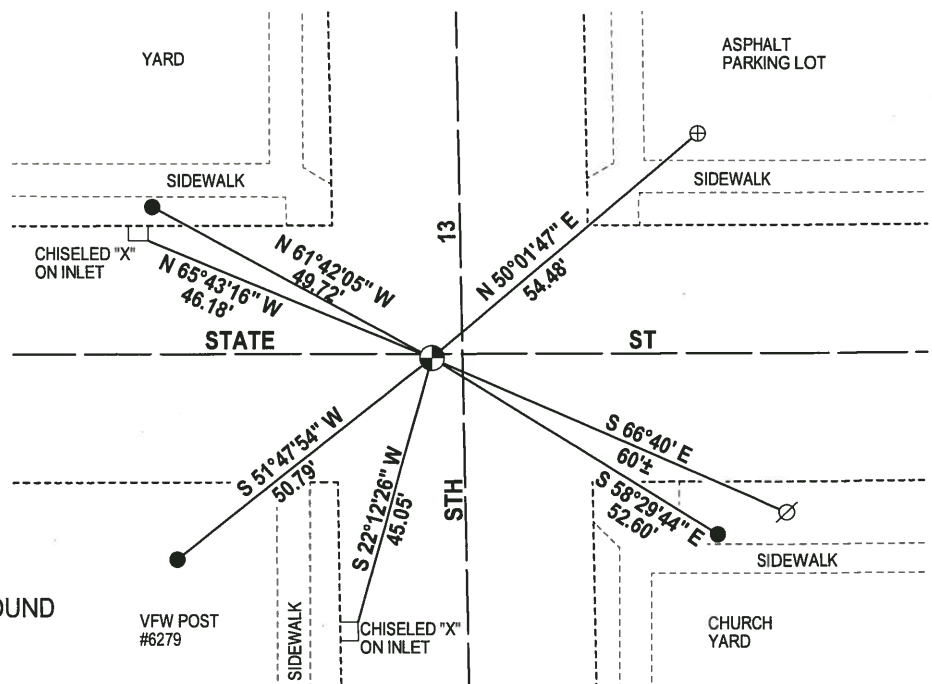
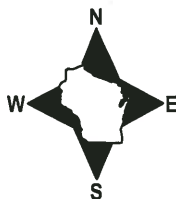
DATA SHOWN HERE ON THIS TIE SHEET IS CORRECT AND COMPLETE TO THE BEST OF MY KNOWLEDGE AND BELIEF.

PROFESSIONAL LAND SURVEYOR

DATE 6/26/17

- TIE SKETCH -

NOTE: THE CORNER FALLS 1± SOUTH OF THE CENTERLINE OF STATE ST.



- 3/4" x 18" IRON REBAR SET, 1.50#/FT
- ⊕ CHISELED "X" ON LIGHT POLE BASE FOUND
- ⊕ 1/2" DRILLED HOLE FOUND
- ∅ WITNESS POWER POLE FOUND

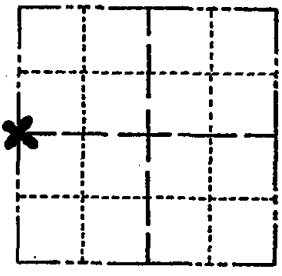
ADAMS COUNTY

Survey Monument Record

TYPE OF MONUMENT: ~~PK Nail in Asphalt over Concrete~~ ^{CHISEL CROSS}
 STATE PLANE COORDINATES: N _____
 E _____

ELEVATION — M.S.L. DATUM: _____
 THETA ANGLE: _____
 FIELD BOOK: _____ PAGE _____

CORNER NO. 493 ⁽³⁵⁾
 SECTION 8
 TOWN 17 N
 RANGE 6 E



LOCATION
(Indicated by 'X')

BASIS FOR MONUMENT LOCATION

(Use reverse side if necessary)

Show info such as: History of corner, with reference to Vol. and pg, dates, surveyor; exact description of monument replaced; if location computed, by taped or EDM traverse; landowner remarks, etc.

Re-established Quarter corner by retracement of Warner and McConick Subdivision, and checking into Homewood Subdivision.

Did not attempt excavation because corner falls in State Truck Highway 13, which has a concrete base.

Everything in good shape 11/21/15 DN-SS
 TIES + MON. OK 3/10/80 RN-SS
 " " 7-26-85 DK-DK
 OK 2-6-90 KZ-GR
 OK 4-7-05 JG-SS

SEAL:



CERTIFIED CORRECT:

Dale C. Hagen
 Registered Land Surveyor
 DATE: August 22, 1974

TIE SKETCH

(Show at least four ties)

