

PUBLIC LAND SURVEY MONUMENT RECORD

TYPE OF MONUMENT: HARRISON (BROKEN-TOP)
 ADAMS COUNTY COORDINATES, NAD 83 (2007)

N. 216178.341

E. 541546.380

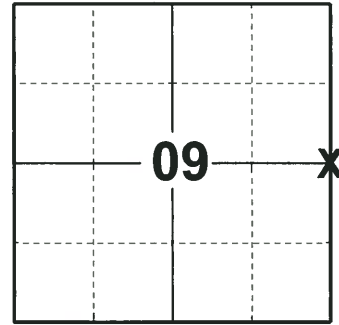
ELEVATION- _____ DATUM _____

FIELD WORK DATE: 08/07/2018

BASIS FOR MONUMENT LOCATION

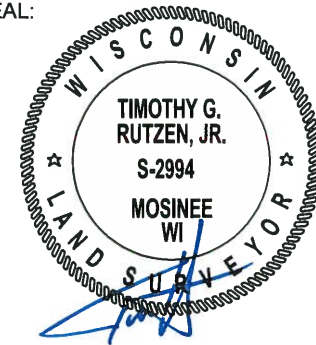
1973 - PLS 878 EXCAVATED WITH A BACKHOE AND FOUND NO EVIDENCE OF THE CORNER. CALCULATED THE CORNER POSITION ON LINE EQUIDISTANT BETWEEN SECTION CORNERS. SET A HARRISON MONUMENT AT THE CALCULATED POSITION AND TIED OUT.

2018 - PLS 2994 FOUND A HARRISON MONUMENT WITH A BROKEN-TOP 6" BELOW THE GROUND SURFACE AND 1 TIE. THE MONUMENT AGREES WITH THE EXISTING TIE. ACCEPTED THE HARRISON MONUMENT WITH A BROKEN-TOP AS THE CORNER LOCATION. SET 3 NEW TIES AND MEASURED TO THE TIES.



LOCATION
 (INDICATE CORNER BY "X")

SEAL:



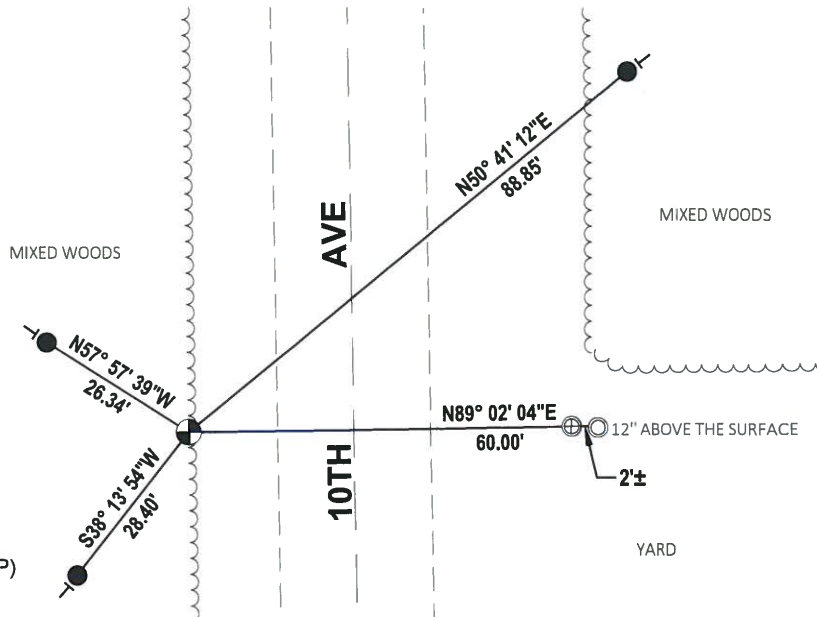
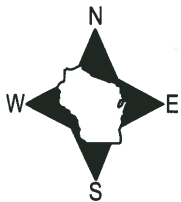
DATA SHOWN HERE ON THIS TIE SHEET IS CORRECT AND COMPLETE TO THE BEST OF MY KNOWLEDGE AND BELIEF.

PROFESSIONAL LAND SURVEYOR

DATE 8-30-18

- TIE SKETCH

NOTE: THE CORNER FALLS 26'± WEST OF THE CENTERLINE OF 10TH AVE.



- SET 3/4" x 18" IRON REBAR, 1.50#/FT
- ⊕ FOUND 1" O.D. IRON PIPE
- ⊙ FOUND 1-1/4" O.D. IRON PIPE
- ⊗ FOUND HARRISON MONUMENT (BROKEN-TOP)
- VINYL "T" POST

ADAMS COUNTY

CORNER NO. 331

Survey Monument Record

SECTION 10

TYPE OF MONUMENT: HARRISON

TOWN 17

STATE PLANE COORDINATES: N

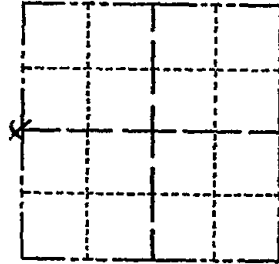
RANGE 6

E

ELEVATION - M.S.L. DATUM:

THETA ANGLE:

FIELD BOOK: 108 PAGE 124



LOCATION (Indicated by 'X')

SEAL:



BASIS FOR MONUMENT LOCATION

(Use reverse side if necessary)

Show info such as: History of corner, with reference to Vol. and pg, dates, surveyor; exact description of monument replaced; if location computed, by taped or EDM traverse; landowner remarks, etc.

Excavated with backhoe, found no evidence of corner. Corner set on line equidistant between section corners.

TOP SECTION BROKEN 9-27-75 SS
TIES OK 3/10/80 RW-SS

- 1 NEW 7-12-85 SS-OK
- 2 NEW 2-6-90 KZ-GR
- 1-GONE 7-29-94 JG-BS

CERTIFIED CORRECT:

Anthony B. Kiedrowski
Registered Land Surveyor

DATE: July 73

TIE SKETCH

1-NEW TIE, 2-10-00, JG-BZ
OK, 1-24-05-JG

(Show at least four ties) 1-21-10 FD TOP 6" BROKEN
OFF-SET STEEL POST/SIGN

