

PUBLIC LAND SURVEY MONUMENT RECORD

TYPE OF MONUMENT: HARRISON (BROKEN-TOP)
ADAMS COUNTY COORDINATES, NAD 83 (2007)

N. 216236.757

E. 552109.816

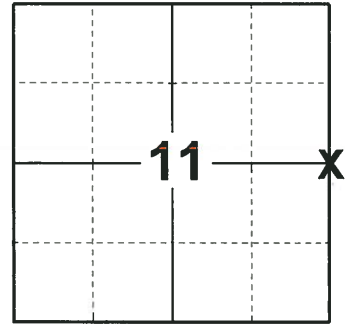
ELEVATION- _____ DATUM _____

FIELD WORK DATE: 08/06/2018

BASIS FOR MONUMENT LOCATION

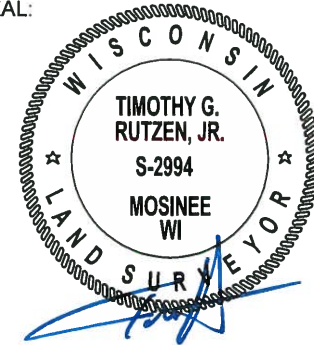
1980 - PLS 1167 FOUND A 1-1/2" x 30" IRON PIPE THAT HAD BEEN ACCEPTED BY PROPERTY OWNERS IN THE AREA AS THE CORNER. REPLACED THE PIPE WITH A HARRISON MONUMENT AND TIED OUT, AFTER VERIFYING THE LOCATION WITH AN EDM TRAVERSE.

2018 - PLS 2994 FOUND A HARRISON MONUMENT WITH A BROKEN-TOP 12" BELOW THE GROUND SURFACE AND 1 TIE. THE MONUMENT AGREES WITH THE EXISTING TIE. ACCEPTED THE HARRISON MONUMENT WITH A BROKEN-TOP AS THE CORNER LOCATION. SET 4 NEW TIES AND MEASURED TO THE TIES.



LOCATION
(INDICATE CORNER BY "X")

SEAL:



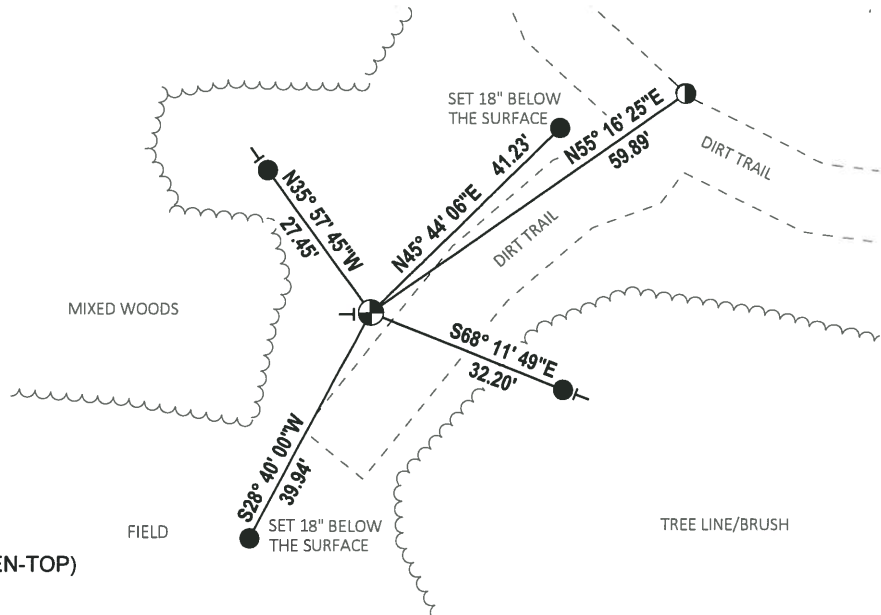
DATA SHOWN HERE ON THIS TIE SHEET IS CORRECT AND COMPLETE TO THE BEST OF MY KNOWLEDGE AND BELIEF.

PROFESSIONAL LAND SURVEYOR

DATE 8-30-18

- TIE SKETCH

NOTE: THE CORNER FALLS 9± WEST OF THE CENTERLINE OF THE DIRT TRAIL.

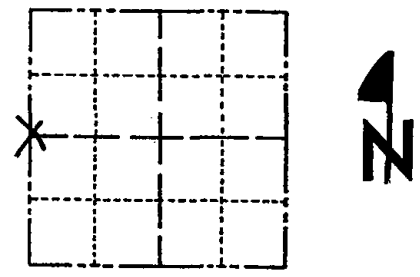


- SET 3/4" x 18" IRON REBAR, 1.50#/FT
- ⊙ FOUND 5/8" IRON ROD
- ⊙ FOUND HARRISON MONUMENT (BROKEN-TOP)
- VINYL "T" POST

Government Land Corner Certificate

Adams County
 TYPE OF MONUMENT: HARRISON
 STATE PLANE COORDINATES: N _____
 E _____
 ELEVATION — M.S.L. DATUM: _____
 THETA ANGLE: _____
 FIELD BOOK: L.L. PAGE _____
 DRAWN BY: Basler

CORNER NO. 39
 SECTION 12
 TOWN 17
 RANGE 6E



LOCATION
(Indicated by 'X')

BASIS FOR MONUMENT LOCATION

Show info such as: History of corner, with reference to Vol. and pg., dates, surveyor; exact description of monument replaced; if location computed, by taped or EDM traverse; landowner remarks, etc. (Use reverse side if necessary)

Found 1 1/2" x 30" iron pipe that had been accepted by property owners in area as the corner. Replaced pipe with Harrison Mon. Varified with EDM Traverse.

ALL OK 7-12-85 DK-SS
 ALL OK 1-31-90 KZ-GR
 4-NEW 6-5-90 DC-JG
 4-GONE, 3-NEW 7-29-94 JG-RS
 ALL OK, 2-10-00, JG-BZ
 OK 1-24-05-JG
 7-21-10 F. 1" IP UP 42" IMMEDIATELY NORTH
 4 TIES REMAIN SS

SEAL:



DATA SHOWN HERE ON
CERTIFIED CORRECT:

Wayne Basler
Registered Land Surveyor

DATE: 6-20-80

TIE SKETCH

Show at least four ties, also fence lines, roads, topo, size and type of witness trees and if off road - best way to arrive at corner.

