

PUBLIC LAND SURVEY MONUMENT RECORD

TYPE OF MONUMENT: HARRISON
ADAMS COUNTY COORDINATES, NAD 83 (2007)

N. 213602.758

E. 552140.847

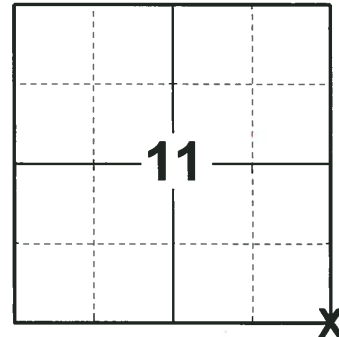
ELEVATION- DATUM

FIELD WORK DATE: 08/07/2018

BASIS FOR MONUMENT LOCATION

1974 - PLS 1103 EDM/TRANSIT TRAVERSE INDICATED THE SEARCH AREA FOR THE NORTHEAST CORNER OF SECTION 14. THE ONLY EVIDENCE OF THE CORNER LOCATION WAS AN EXISTING RAILROAD SPIKE, THIS WAS ACCEPTED AS THE CORNER LOCATION. SET A HARRISON MONUMENT THE SAME AT THE CORNER LOCATION AND TIED OUT.

2018 - PLS 2994 FOUND A HARRISON MONUMENT 4" BELOW THE ROAD SURFACE, 2 TIES AND 1 WITNESS. THE MONUMENT AGREES WITH THE EXISTING TIES AND WITNESS. ACCEPTED THE HARRISON MONUMENT AS THE CORNER LOCATION. SET 2 NEW TIES AND MEASURED TO THE TIES AND WITNESS.



LOCATION
(INDICATE CORNER BY "X")

SEAL:



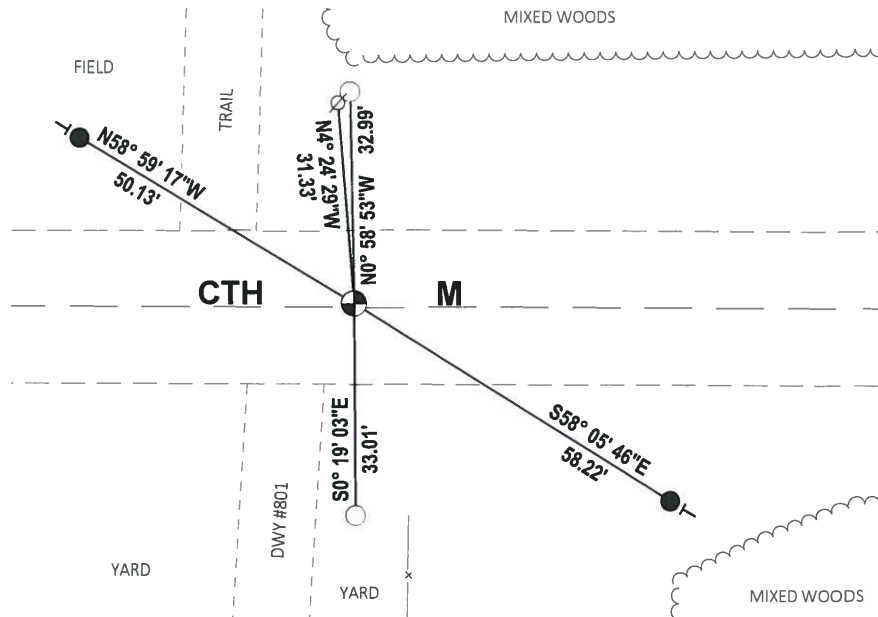
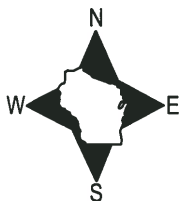
DATA SHOWN HERE ON THIS TIE SHEET IS CORRECT AND COMPLETE TO THE BEST OF MY KNOWLEDGE AND BELIEF.

PROFESSIONAL LAND SURVEYOR

DATE 8-30-18

TIE SKETCH

NOTE: THE CORNER FALLS 1± NORTH OF THE CENTERLINE OF CTH M.



- SET 3/4" x 18" IRON REBAR, 1.50#/FT
- FOUND 3/4" IRON ROD
- ⊕ FOUND HARRISON MONUMENT
- ∅ WITNESS POWER POLE
- VINYL "T" POST

ADAMS COUNTY

Survey Monument Record

TYPE OF MONUMENT: Standard Harrison Monument

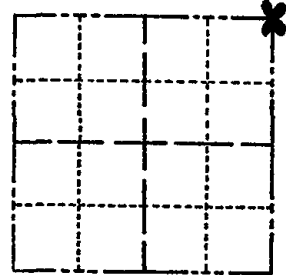
STATE PLANE COORDINATES: N _____
E _____

ELEVATION — M.S.L. DATUM: _____

THETA ANGLE: _____

FIELD BOOK: _____ PAGE _____

CORNER NO. 496 ⁽⁵¹⁾
SECTION 14
TOWN 17 N
RANGE 6 E



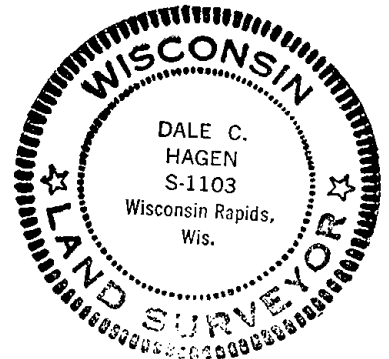
LOCATION
(Indicated by 'X')

BASIS FOR MONUMENT LOCATION

(Use reverse side if necessary)

Show info such as: History of corner, with reference to Vol. and pg, dates, surveyor; exact description of monument replaced; if location computed, by taped or EDM traverse; landowner remarks, etc.

SEAL:



EDM/transit traverse indicated search area for the Northeast corner of Section 14.

The only evidence of the location of the corner was an existing Railroad spike, and this was accepted and monumented.

COR. O.K. 9-27-75 S.S.

COR. BEARS 3/13/80 RN-SJ

ALL OK 7-16-85 OK

ALL OK SEE CSM 1-31-90 KT-GR

1-GONE, 2-NEW 7-29-94 JG-BB

1-NEW TIE, 2-10-00, JG-BZ

CERTIFIED CORRECT:

Dale C. Hagen
Registered Land Surveyor

DATE: August 19, 1974

TIE SKETCH OK 3-1-85 KA-SS SEE CSM 2322
2-11-10 SS

(Show at least four ties)

