

## PUBLIC LAND SURVEY MONUMENT RECORD

TYPE OF MONUMENT: HARRISON (BROKEN TOP)  
 ADAMS COUNTY COORDINATES, NAD 83 (2007)

N. 210879.446

E. 531058.114

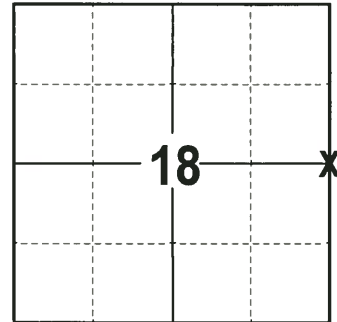
ELEVATION-      DATUM     

FIELD WORK DATE: 06/14/2017

### BASIS FOR MONUMENT LOCATION

1973- PLS 878 RE-LOCATED CORNER BY RETRACING TIE AS SHOWN ON RAILROAD PLAT. CORNER FALLS IN THE WESTERLY RIGHT OF WAY DITCH. SET HARRISON MONUMENT.

2017 - PLS 2994 FOUND HARRISON 24" BELOW THE SURFACE, 1 TIE AND 1 WITNESS. THE MONUMENT AGREES WITH THE EXISTING TIE AND WITNESS. ACCEPTED HARRISON AS CORNER LOCATION, SET 3 NEW TIES AND RE-MEASURED TO EXISTING TIE AND WITNESS.



**LOCATION**  
 (INDICATE CORNER BY "X")

SEAL:



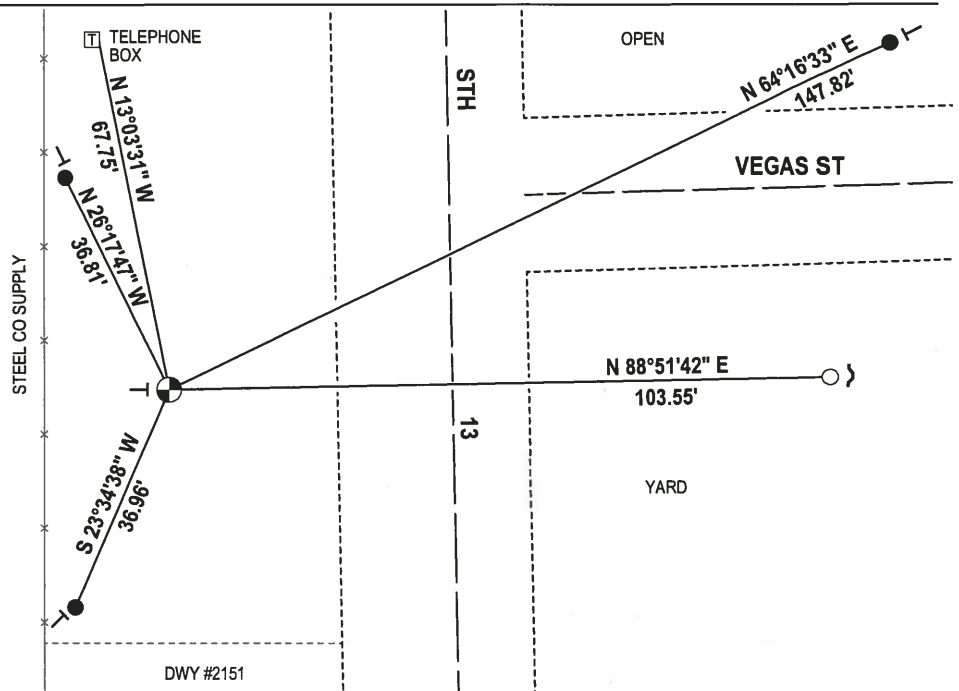
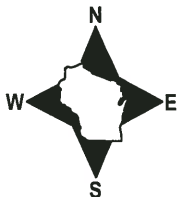
DATA SHOWN HERE ON THIS TIE SHEET IS CORRECT AND COMPLETE TO THE BEST OF MY KNOWLEDGE AND BELIEF.

PROFESSIONAL LAND SURVEYOR

DATE 6/26/17

### - TIE SKETCH

NOTE: THE CORNER FALLS 44± WEST OF THE CENTERLINE OF STH 13.



- 3/4" x 18" IRON REBAR SET, 1.50#/FT
- 1-1/4" O.D. IRON PIPE FOUND
- ⊕ HARRISON (BROKEN TOP) FOUND
- ~ STEEL FENCE POST
- | VINYL "T" POST

# ADAMS COUNTY

## Survey Monument Record

TYPE OF MONUMENT: HARRISON MONUMENT

STATE PLANE COORDINATES: N \_\_\_\_\_

E \_\_\_\_\_

ELEVATION — M.S.L. DATUM: \_\_\_\_\_

THETA ANGLE: \_\_\_\_\_

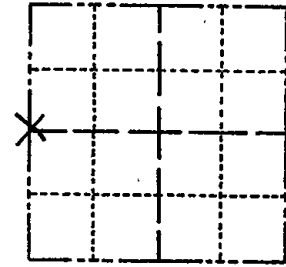
FIELD BOOK: \_\_\_\_\_ PAGE \_\_\_\_\_

CORNER NO. 451

SECTION 17

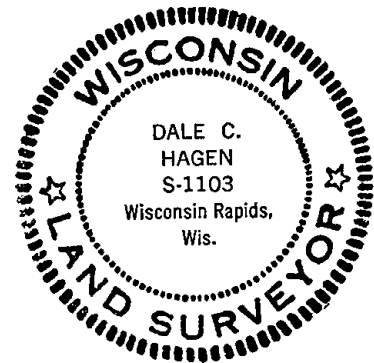
TOWN 17

RANGE 6



LOCATION  
(Indicated by 'X')

SEAL:



### BASIS FOR MONUMENT LOCATION

(Use reverse side if necessary)

Show info such as: History of corner, with reference to Vol. and pg, dates, surveyor; exact description of monument replaced; if location computed, by taped or EDM traverse; landowner remarks, etc.

Corner relocated by retracing tie as shown on Railroad Plat.

Corner falls in Westerly right of way ditch of State Trunk Highway 13. Set Standard Harrison Monument.

CORNER O.K. 10/28/75 D.M. - S.C.  
 " " 7/26/85 DK - DK  
 1 GONE NO NEW 2-6-90 KZ - GR  
 2-GONE, 3-NEW 7-29-94 JG - BS  
 ALL OK 2-10-00, JG - BZ  
 OK, 1-28-05 - JG

CERTIFIED CORRECT:

*Dale C. Hagen*  
 Registered Land Surveyor

DATE: July 31, 1974

### TIE SKETCH

(Show at least four ties)

#### NOTE:

Ties in trees to nail in disc.

