

PUBLIC LAND SURVEY MONUMENT RECORD

TYPE OF MONUMENT: HARRISON
 ADAMS COUNTY COORDINATES, NAD 83 (2007)

N. 210935.284

E. 566340.099

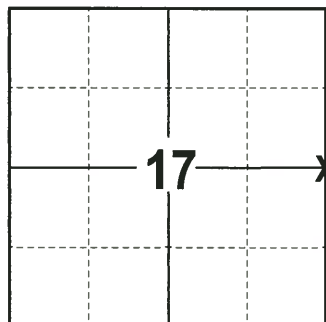
ELEVATION- _____ DATUM _____

FIELD WORK DATE: 06/12/2017

BASIS FOR MONUMENT LOCATION

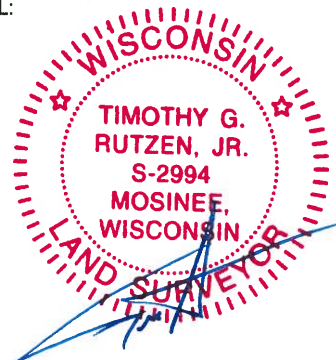
1974- PLS 1103 FOUND EXISTING 1" IRON PIPE AT THE PROPER DISTANCE FROM REFERENCE MONUMENT. THE REFERENCE MONUMENT TO THE NORTHWEST HAD BEEN DESTROYED. SET A HARRISON MONUMENT.

2017 - PLS 2994 FOUND HARRISON 6" BELOW THE SURFACE, 4 TIES AND 1 WITNESS. THE MONUMENT AGREES WITH THE EXISTING TIES AND WITNESS. ACCEPTED HARRISON AS CORNER LOCATION, SET 1 NEW TIE AND RE-MEASURED TO EXISTING TIES AND WITNESS.



LOCATION
 (INDICATE CORNER BY "X")

SEAL:



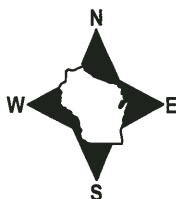
DATA SHOWN HERE ON THIS TIE SHEET IS CORRECT AND COMPLETE TO THE BEST OF MY KNOWLEDGE AND BELIEF.

PROFESSIONAL LAND SURVEYOR

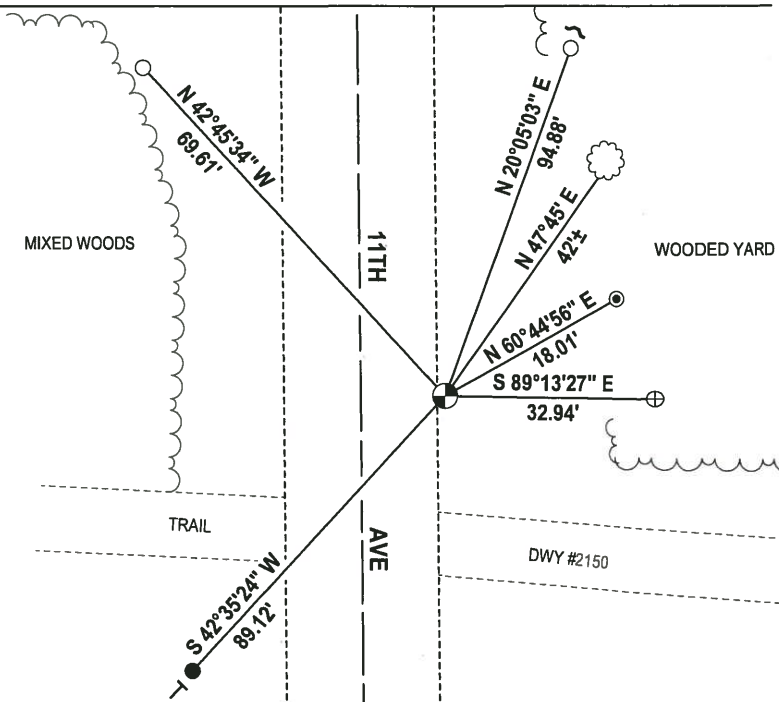
DATE 6/26/17

- TIE SKETCH

NOTE: THE CORNER FALLS 13'± EAST OF THE CENTERLINE OF 11TH AVE.



- 3/4" x 18" IRON REBAR SET, 1.50#/FT
- 1-1/4" O.D. IRON PIPE FOUND
- ⊕ 2-3/8" O.D. IRON PIPE FOUND
- ⊙ ALUMINUM CAP IN CONCRETE FOUND
- ⊕ HARRISON FOUND
- ↘ STEEL FENCE POST
- └ VINYL "T" POST
- ☼ WITNESS TREE FOUND



ADAMS COUNTY

Survey Monument Record

TYPE OF MONUMENT: Standard Harrison

STATE PLANE COORDINATES: N _____

E _____

ELEVATION — M.S.L. DATUM: _____

THETA ANGLE: _____

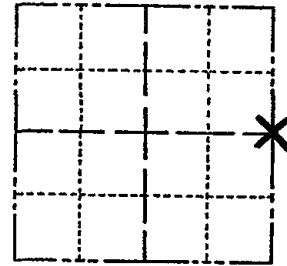
FIELD BOOK: /// PAGE 5

CORNER NO. 365

SECTION 17

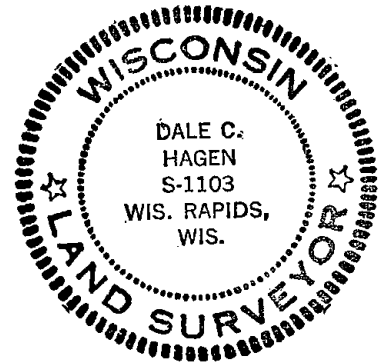
TOWN 17

RANGE 6



LOCATION
(Indicated by 'X')

SEAL:



BASIS FOR MONUMENT LOCATION

(Use reverse side if necessary)

Show info such as: History of corner, with reference to Vol. and pg, dates, surveyor; exact description of monument replaced; if location computed, by taped or EDM traverse; landowner remarks, etc.

Found existing 1-inch iron pipe at proper distance from reference monument set by R. Phillips. Monument to the Northwest has been destroyed. Replaced with Standard Harrison Monument.

CORNER O.K. 9-27-75 SS
 MON. BEERS TRS OK 3/80 RANS
 1 GONE 1 new 7-18-85 DK
 1-GONE-2-NEW 6-5-90 DC-JG
 ALL OK 8-1-94 JG-BS
 ALL OK, 2-14-80, JG

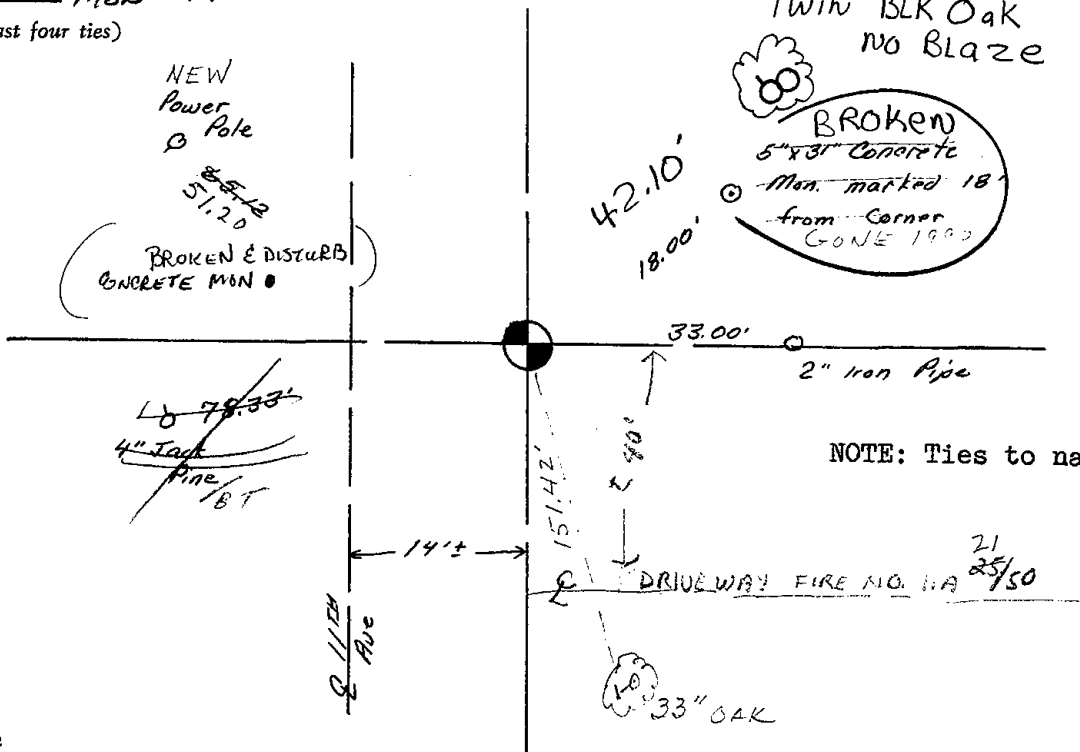
CERTIFIED CORRECT:

Dale C. Hagen
 Registered Land Surveyor

DATE: April 24, 1974

TIE SKETCH OK, 1-25-05-JG MON 947123 OK 1-26-10

(Show at least four ties)



NOTE: Ties to nail and disc.