

PUBLIC LAND SURVEY MONUMENT RECORD

TYPE OF MONUMENT: HARRISON

ADAMS COUNTY COORDINATES, NAD 83 (2007)

N. 210983.858

E. 546894.083

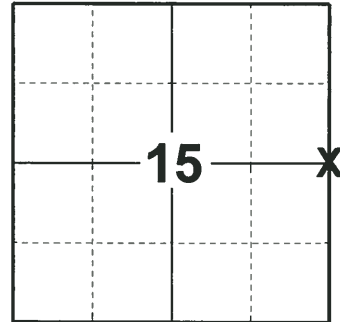
ELEVATION- DATUM

FIELD WORK DATE: 08/17/2018

BASIS FOR MONUMENT LOCATION

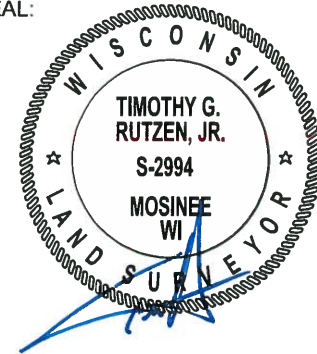
1980 - PLS 1167 SEARCHED THE AREA AND FOUND NO EVIDENCE OF THE ORIGINAL MONUMENT OR ANY REMONUMENTATION. CALCULATED THE CORNER POSITION MIDWAY ON A STRAIGHT LINE BETWEEN ADJACENT SECTION CORNERS. SET A HARRISON AT THE CALCULATED POSITION AND TIED OUT.

2018 - PLS 2994 FOUND A HARRISON MONUMENT 2" ABOVE THE GROUND SURFACE. FOUND NO EVIDENCE OF ANY OF THE TIES OR WITNESSES. FURTHER REVIEW REVEALS THE CORNER FALLS 40'± SOUTH FROM BEING EQUIDISTANT AND 3'± WEST FROM BEING ON LINE. HARRISON DOES NOT APPEAR TO BE MOVED OR DISTURBED. ACCEPTED THE HARRISON MONUMENT AS THE BEST EVIDENCE OF THE CORNER LOCATION. SET 4 NEW TIES AND MEASURED TO THE TIES.



LOCATION
(INDICATE CORNER BY "X")

SEAL:

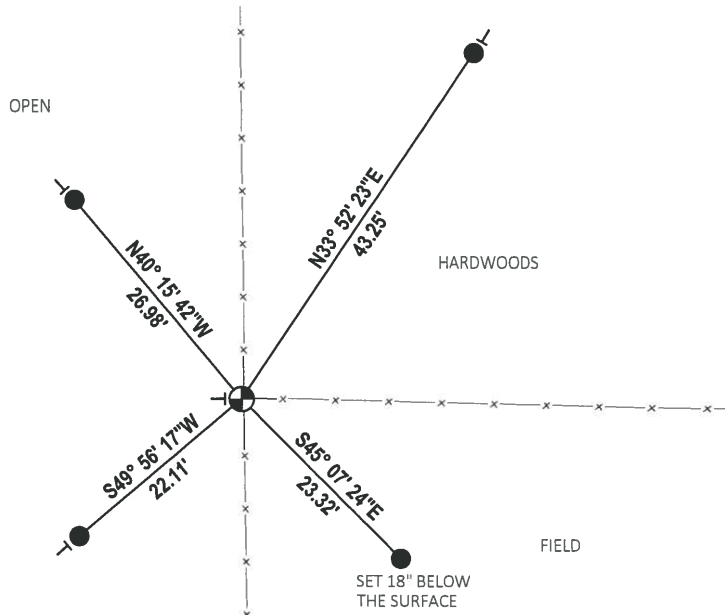
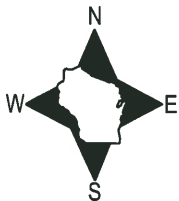


DATA SHOWN HERE ON THIS TIE SHEET IS CORRECT AND COMPLETE TO THE BEST OF MY KNOWLEDGE AND BELIEF.

PROFESSIONAL LAND SURVEYOR

DATE 8-30-18

TIE SKETCH

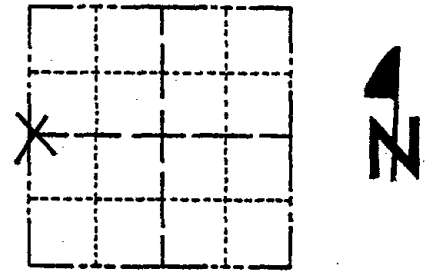


- SET 3/4" x 18" IRON REBAR, 1.50#/FT
- ⊙ FOUND HARRISON MONUMENT
- | VINYL "T" POST

Government Land Corner Certificate

Adams County
 TYPE OF MONUMENT: HARRISON
 STATE PLANE COORDINATES: N _____
 E _____
 ELEVATION — M.S.L. DATUM: _____
 THETA ANGLE: _____
 FIELD BOOK: U.L. PAGE _____
 DRAWN BY: BASLER

CORNER NO. 58
 SECTION 14
 TOWN 17
 RANGE 6E



LOCATION
 (Indicated by 'X')

BASIS FOR MONUMENT LOCATION

Show info such as: History of corner, with reference to Vol. and pg., dates, surveyor; exact description of monument replaced; if location computed, by taped or EDM traverse; landowner remarks, etc. (Use reverse side if necessary).

Searched area, could find no evidence of original monument or any remonumentation. Set Harrison midway on straight line between adjacent corners.

- 1 NEW TIE 1-15-90 SS
- 1-NEW TIE 8-2-94 56-BS
- ALL OK, 4-6-00 - JG
- OK 2-18-05 SS
- 3 NEW TIES 1-25-10 SS

SEAL:

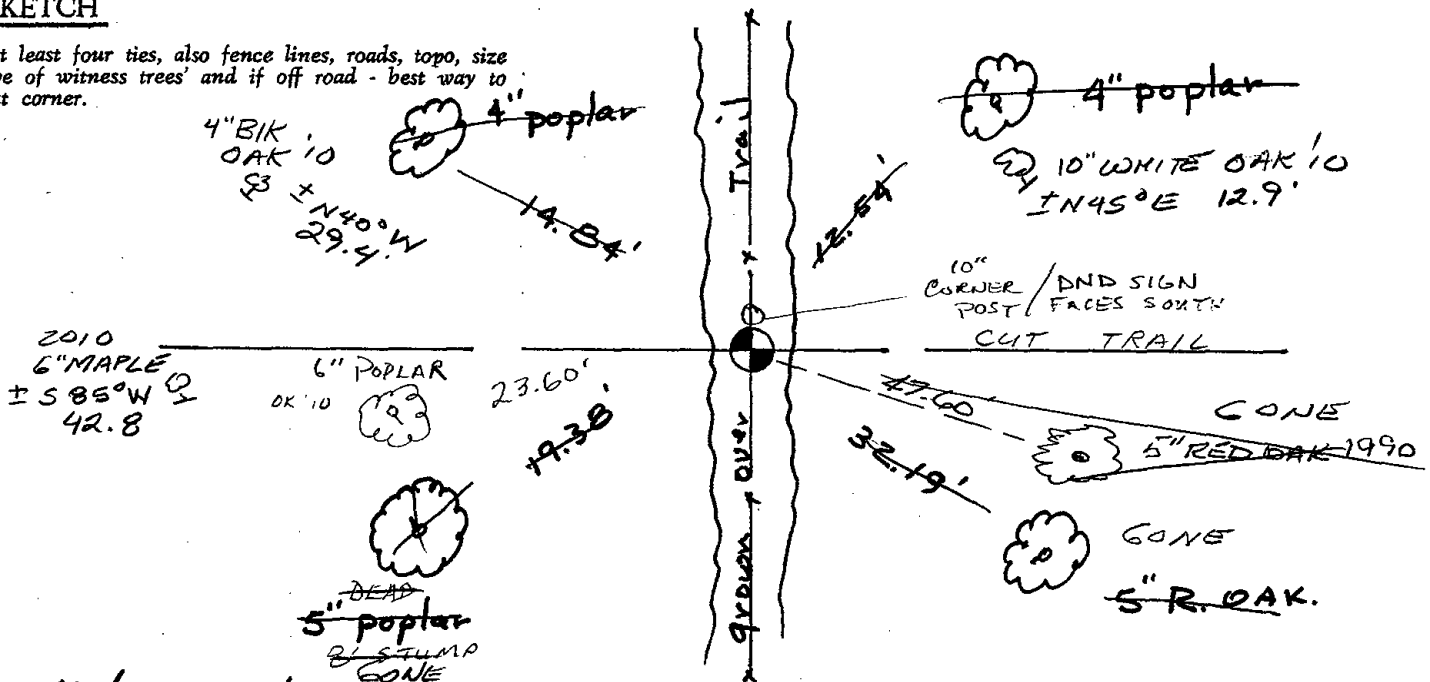
DATA SHOWN HERE ON
 CERTIFIED CORRECT:

Wayne Basler
 Registered Land Surveyor

DATE: 7-2-80

TIE SKETCH

Show at least four ties, also fence lines, roads, topo, size and type of witness trees and if off road - best way to arrive at corner.



All distances to spikes in trees / blazed

