

17 SECTION 17 TOWN 06 RANGE

ADAMS COUNTY

COUNTY CORNER NO: 64

ROMPORTOL ID: 41706170020

PUBLIC LAND SURVEY MONUMENT RECORD

TYPE OF MONUMENT: HARRISON
ADAMS COUNTY COORDINATES, NAD 83 (2007)

N. 208272.422

E. 533688.276

ELEVATION- DATUM

FIELD WORK DATE: 06/15/2017

BASIS FOR MONUMENT LOCATION

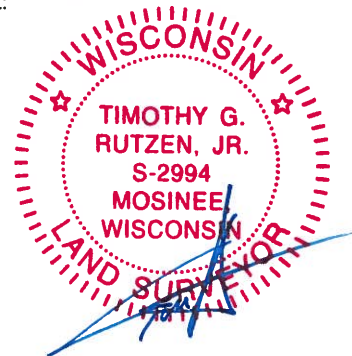
1974- PLS 1103 EXCAVATION AT INTERSECTION OF ANCIENT FENCES YIELDED REMNANTS OF A POST. TRAVERSED SHOWED POSITION FIT. RE-SET CORNER WITH A HARRISON MONUMENT.

2017 - PLS 2994 FOUND HARRISON MONUMENT 4" ABOVE THE GROUND AT FENCE CORNER AND 2 WITNESS TREES. THE MONUMENT AGREES WITH THE EXISTING WITNESSES. ACCEPTED HARRISON AS CORNER LOCATION, SET 4 NEW TIES AND RE-MEASURED TO WITNESSES AND TIES.



LOCATION
(INDICATE CORNER BY "X")

SEAL:

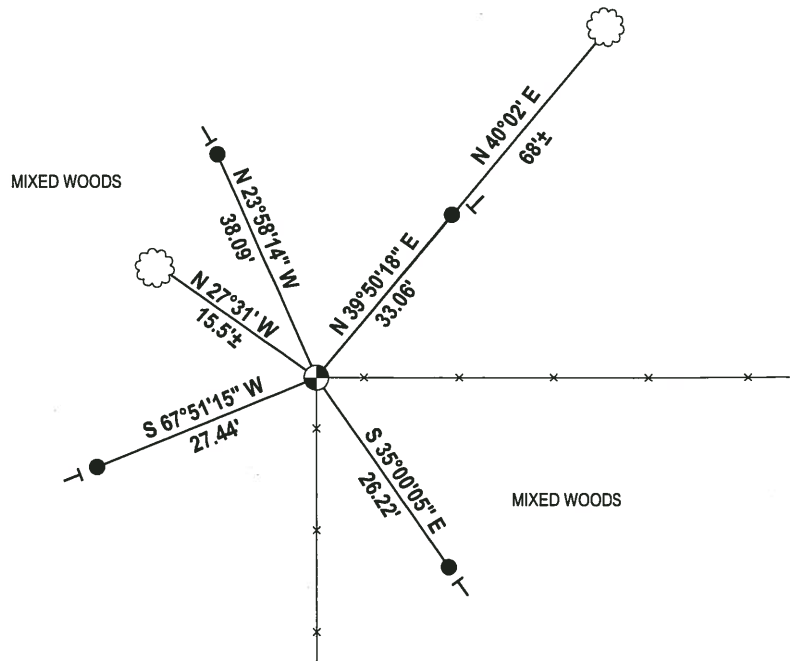
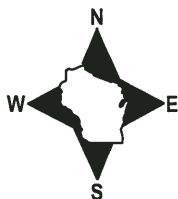


DATA SHOWN HERE ON THIS TIE SHEET IS CORRECT AND COMPLETE TO THE BEST OF MY KNOWLEDGE AND BELIEF.

PROFESSIONAL LAND SURVEYOR

DATE 6/26/17

- TIE SKETCH



- 3/4" x 18" IRON REBAR SET, 1.50#/FT
- ⊕ HARRISON FOUND
- VINYL "T" POST
- ☁ WITNESS TREE FOUND

ADAMS COUNTY

CORNER NO. 362

Survey Monument Record

SECTION 17

TYPE OF MONUMENT: 30" HARRISON

TOWN 17

STATE PLANE COORDINATES: N _____

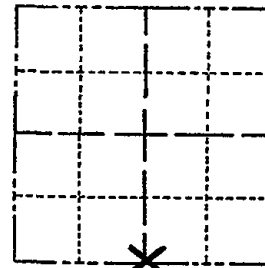
RANGE 6

E _____

ELEVATION — M.S.L. DATUM: _____

THETA ANGLE: _____

FIELD BOOK: /// PAGE 7



LOCATION
(Indicated by 'X')

SEAL:

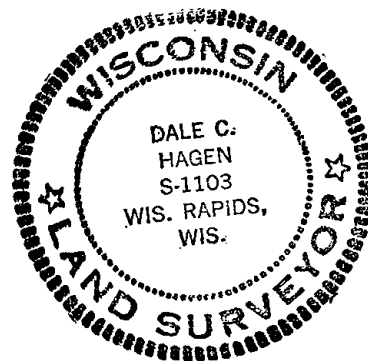
BASIS FOR MONUMENT LOCATION

(Use reverse side if necessary)

Show info such as: History of corner, with reference to Vol. and pg, dates, surveyor; exact description of monument replaced; if location computed, by taped or EDM traverse; landowner remarks, etc.

Excavation at the intersection of ancient fences yielded remnants of dug-in post. Traverse showed position fit properly rest of section.

Monumented with Standard Harrison monument.



Everything O.K. 10/19/75 SS
 1 GONE - Mon. O.K. 10-18-85 MB-SS
 OK 3-19-90 SS
 1- GONE, 2-NEW 8-1-94 JG-BS
 All OK, 4-4-00, JG
 " " 3-31-05 SS
 " " 1-26-10 SS

CERTIFIED CORRECT:

Dale C. Hagen
Registered Land Surveyor

DATE: April 24, 1974

TIE SKETCH

(Show at least four ties)

NOTE: Ties taken to nail and disc.

