

17 SECTION 17 TOWN 06 RANGE

ADAMS COUNTY

COUNTY CORNER NO: 65

ROMPORTOL ID: 41706170000

PUBLIC LAND SURVEY MONUMENT RECORD

TYPE OF MONUMENT: HARRISON (BROKEN TOP)
ADAMS COUNTY COORDINATES, NAD 83 (2007)

N. 208297.032

E. 536351.811

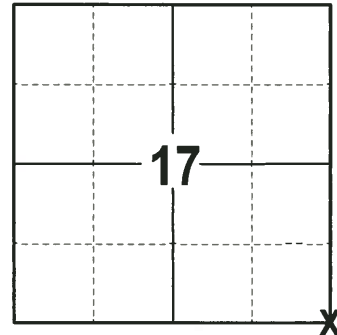
ELEVATION- DATUM

FIELD WORK DATE: 06/12/2017

BASIS FOR MONUMENT LOCATION

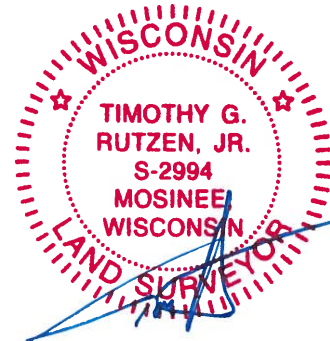
1974- PLS 1103 FOUND A 31"x5" ROUND CONCRETE REFERENCE MONUMENT SET BY R. PHILLIPS. EXCAVATION YIELDED NO EVIDENCE OF THE CORNER. RE-LOCATED CORNER FROM TIES TO REFERENCE MONUMENTS AND SET 2 ADDITIONAL TIES.

2017 - PLS 2994 FOUND HARRISON MONUMENT 16" BELOW THE SURFACE AND 2 TIES. THE MONUMENT AGREES WITH THE EXISTING TIES. ACCEPTED HARRISON AS CORNER LOCATION. SET 3 NEW TIES AND RE-MEASURED TO EXISTING TIES.



LOCATION
(INDICATE CORNER BY "X")

SEAL:



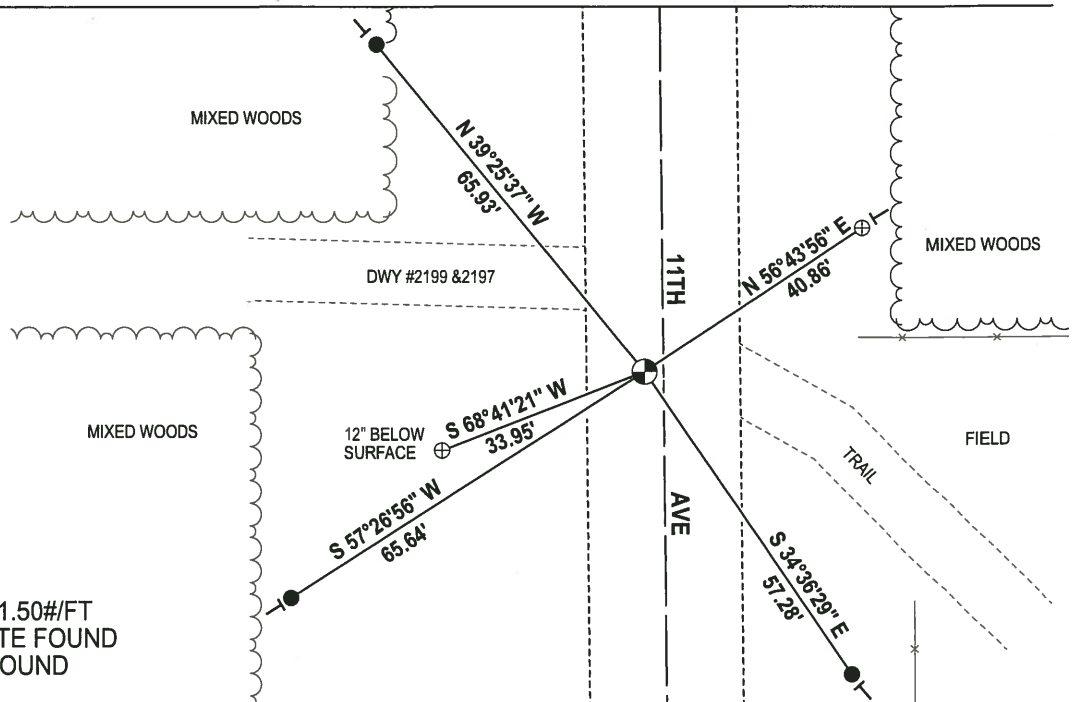
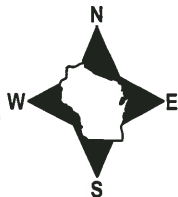
DATA SHOWN HERE ON THIS TIE SHEET IS CORRECT AND COMPLETE TO THE BEST OF MY KNOWLEDGE AND BELIEF.

PROFESSIONAL LAND SURVEYOR

DATE 6/26/17

- TIE SKETCH

NOTE: THE CORNER FALLS 3± WEST OF THE CENTERLINE OF 11TH AVE.



- 3/4" x 18" IRON REBAR SET, 1.50#/FT
- ⊕ ALUMINUM CAP IN CONCRETE FOUND
- ⊕ HARRISON (BROKEN TOP) FOUND
- VINYL "T" POST

ADAMS COUNTY

Survey Monument Record

TYPE OF MONUMENT: Standard Harrison

STATE PLANE COORDINATES: N _____

E _____

ELEVATION — M.S.L. DATUM: _____

THETA ANGLE: _____

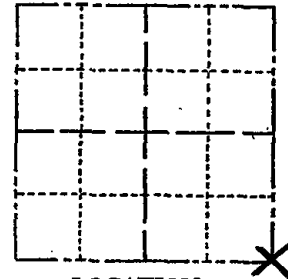
FIELD BOOK: 111 PAGE 6

CORNER NO. 364

SECTION 17

TOWN 17

RANGE 6



LOCATION
(Indicated by 'X')

SEAL:



BASIS FOR MONUMENT LOCATION

(Use reverse side if necessary)

Show info such as: History of corner, with reference to Vol. and pg, dates, surveyor; exact description of monument replaced; if location computed, by taped or EDM traverse; landowner remarks, etc.

Found 31" by 5" round concrete reference monuments set by R. Phillips. Excavation yielded no evidence of corner in place. Corner was relocated from ties to reference monuments and two additional ties were made.

COR. O.K. 9-27-15 SS
 COR. BEERS TIES OK 3/10/80 RM-LS
 ALL OK 7-18-85 OK
 ALL OK 1-10-90 SS
 I-NEW 8-1-94 JG-BS

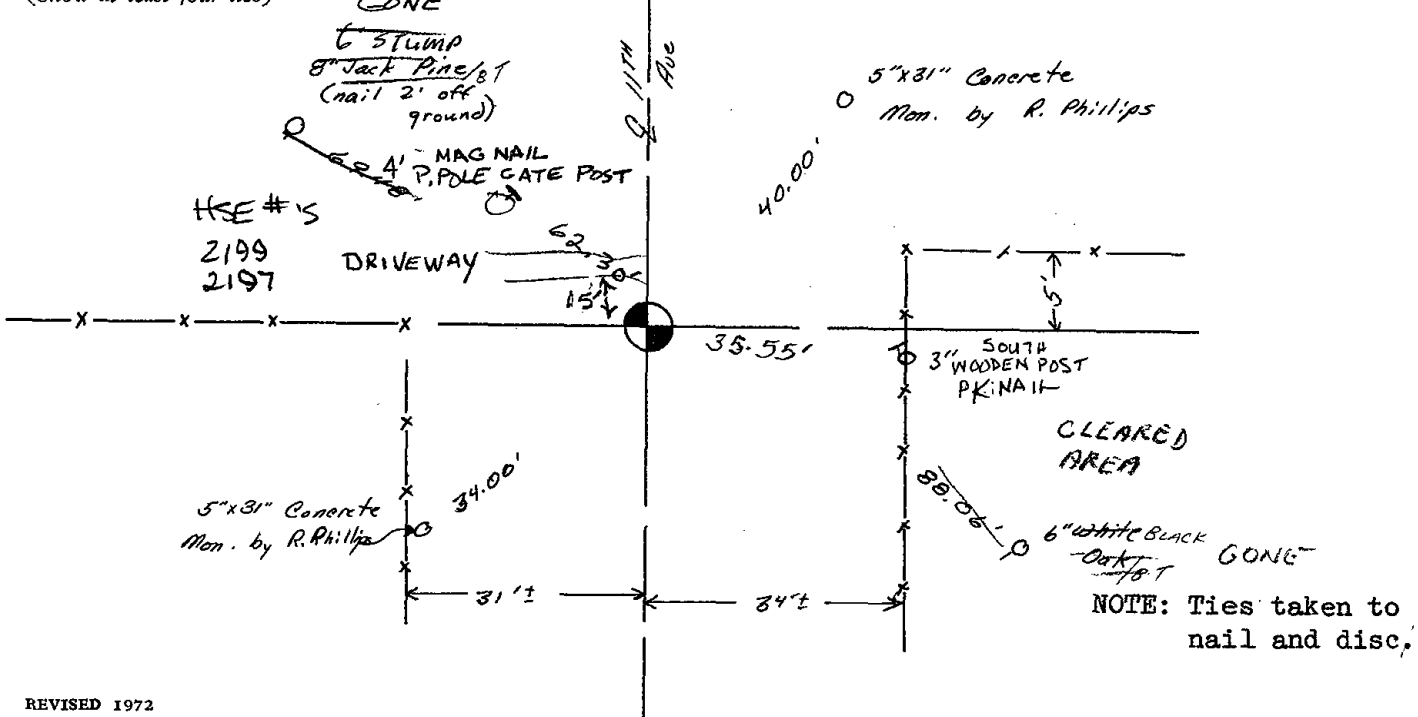
CERTIFIED CORRECT:

Dale C. Hagen
Registered Land Surveyor

DATE: April 24, 1974

TIE SKETCH ALL OK, 2-14-00 JG
1-GONE, 1-NEW, 1-25-05-JG
OK 1-26-10-SS

(Show at least four ties)



NOTE: Ties taken to nail and disc,