

15  
SECTION

17  
TOWN

06  
RANGE

# ADAMS COUNTY

COUNTY CORNER NO: 69  
ROMPORTOL ID: 4170615000

## PUBLIC LAND SURVEY MONUMENT RECORD

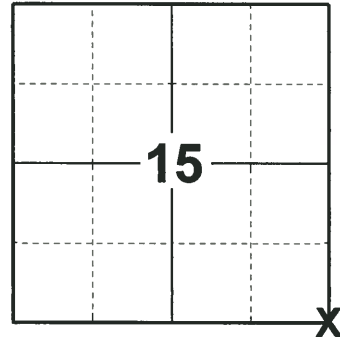
TYPE OF MONUMENT: HARRISON (BROKEN-TOP)  
ADAMS COUNTY COORDINATES, NAD 83 (2007)

N. 208355.823

E. 546918.671

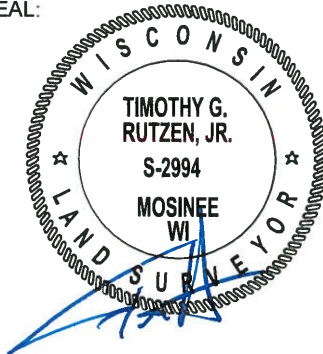
ELEVATION- \_\_\_\_\_ DATUM \_\_\_\_\_

FIELD WORK DATE: 08/13/2018



**LOCATION**  
(INDICATE CORNER BY "X")

SEAL:



DATA SHOWN HERE ON THIS TIE SHEET IS CORRECT AND COMPLETE TO THE BEST OF MY KNOWLEDGE AND BELIEF.

PROFESSIONAL LAND SURVEYOR

DATE 8-30-18

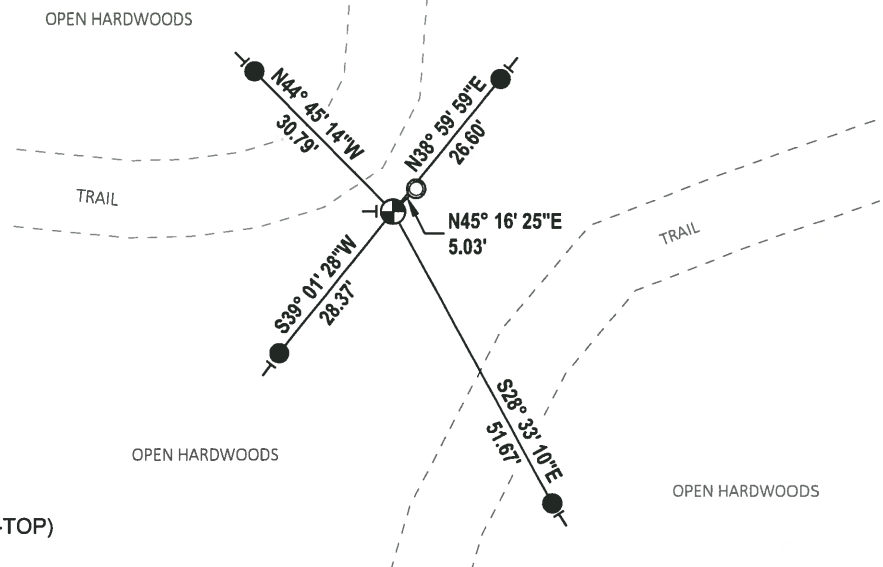
### BASIS FOR MONUMENT LOCATION

1975 - PLS 1103 RAN EDM/TRANSIT TRAVERSE AROUND SECTIONS 23, 24 AND PARTS OF ADJOINING SECTIONS. FOUND NO EVIDENCE OF THE ORIGINAL CORNER OR ANY REMONUMENTATION. THE REMNANTS OF A 10" PINE BEARING TREE WERE FOUND. COULD NOT FIND ANY RECORD OF THE BEARING TREE IN ANY COUNTY RECORDS. CALCULATED THE CORNER POSITION AT RECORD DISTANCE FROM THE NORTH QUARTER CORNER AND OPPOSITE SCRIBED FACE OF BEARING TREE. SAID LOCATION IS AN EXTENSION OF LINE BETWEEN THE SOUTHWEST AND WEST QUARTER CORNERS. SET A HARRISON AT THE CALCULATED POSITION AND TIED OUT.

2018 - PLS 2994 FOUND A HARRISON MONUMENT WITH A BROKEN-TOP 6" BELOW THE GROUND SURFACE AND 1 TIE. THE MONUMENT AGREES WITH THE EXISTING TIE. ACCEPTED THE HARRISON MONUMENT WITH A BROKEN-TOP AS THE CORNER LOCATION. SET 4 NEW TIES AND MEASURED TO THE TIES.

### - TIE SKETCH

NOTE: THE CORNER FALLS 13'± SOUTHEAST OF THE CENTERLINE OF THE TRAIL TO THE NORTH AND 31'± NORTHWEST OF THE CENTERLINE OF THE TRAIL TO THE SOUTH.



- SET 3/4" x 18" IRON REBAR, 1.50#/FT
- FOUND 1-1/4" O.D. IRON PIPE
- ⊙ FOUND HARRISON MONUMENT (BROKEN-TOP)
- VINYL "T" POST

**ADAMS COUNTY**

**Survey Monument Record**

TYPE OF MONUMENT: Standard Harrison

STATE PLANE COORDINATES: N \_\_\_\_\_

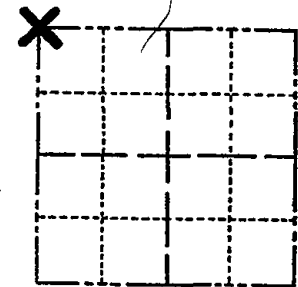
E \_\_\_\_\_

ELEVATION — M.S.L. DATUM: \_\_\_\_\_

THETA ANGLE: \_\_\_\_\_

FIELD BOOK: \_\_\_\_\_ PAGE \_\_\_\_\_

CORNER NO. 694<sup>(69)</sup>  
 SECTION 23  
 TOWN 17  
 RANGE 6



LOCATION  
(Indicated by 'X')

SEAL:



**BASIS FOR MONUMENT LOCATION**

(Use reverse side if necessary)

Show info such as: History of corner, with reference to Vol. and pg, dates, surveyor; exact description of monument replaced; if location computed, by taped or EDM traverse; landowner remarks, etc.

Ran EDM/transit traverse around Section 23 and 24, and parts of adjoining sections. Could find no evidence of the original corner or any remonumentation, but remnants of a 10" Pine bearing tree were found.

Was unable to discover any record of the bearing tree in any County records.

Set corner at record distance from North Quarter corner and opposite scribed face of bearing tree. Said location happened to be on extension of line between Southwest and West Quarter corners.

CERTIFIED CORRECT:

*Dale C. Hagen*  
Registered Land Surveyor

DATE: July 1, 1975

**TIE SKETCH 2-GONE, 2-NEW, MON. OK, 4-6-00-JG**

(Show at least four ties) OK, 2-18-05 SS  
 " 1-25-10 ISS

**NOTE:** Ties in trees to nail in disc.

