

14
SECTION

17
TOWN

06
RANGE

ADAMS COUNTY

COUNTY CORNER NO: 70
ROMPORTOL ID: 41706140020

PUBLIC LAND SURVEY MONUMENT RECORD

TYPE OF MONUMENT: HARRISON (BROKEN-TOP)
ADAMS COUNTY COORDINATES, NAD 83 (2007)

N. 208358.629

E. 549550.690

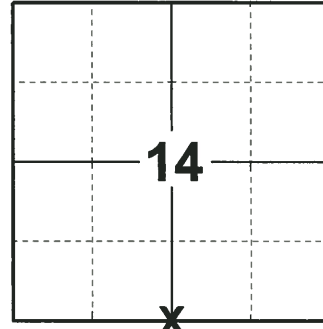
ELEVATION- _____ DATUM _____

FIELD WORK DATE: 08/07/2018

BASIS FOR MONUMENT LOCATION

1974 - PLS 1103 RAN EDM/TRANSIT TRAVERSE AROUND SECTIONS 23, 24 AND PARTS OF ADJOINING SECTIONS. FOUND EXISTING 1" IRON PIPE AT THE NORTH QUARTER CORNER OF SECTION 23. SAID PIPE DID NOT MATCH THE RESURVEY NOTES BY M.C. SMITH ON DECEMBER 8, 1921, BUT IT DID MATCH THE POSSESSION LINE QUITE WELL. REMONUMENTED LOCATION WITH A STANDARD HARRISON MONUMENT AND TIED OUT.

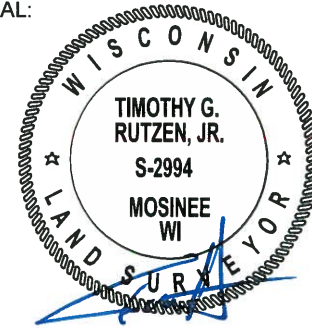
2018 - PLS 2994 FOUND A HARRISON MONUMENT WITH A BROKEN-TOP 12" BELOW THE ROAD SURFACE, 1 TIE, 1 PROPERTY IRON AND 1 WITNESS. THE MONUMENT AGREES WITH THE EXISTING TIE AND WITNESS. ACCEPTED THE HARRISON MONUMENT WITH A BROKEN-TOP AS THE CORNER LOCATION. SET 2 NEW TIES AND MEASURED TO THE TIES, PROPERTY IRON AND WITNESS.



LOCATION

(INDICATE CORNER BY "X")

SEAL:



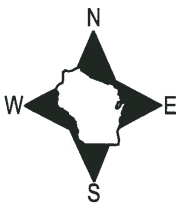
DATA SHOWN HERE ON THIS TIE SHEET IS CORRECT AND COMPLETE TO THE BEST OF MY KNOWLEDGE AND BELIEF.

PROFESSIONAL LAND SURVEYOR

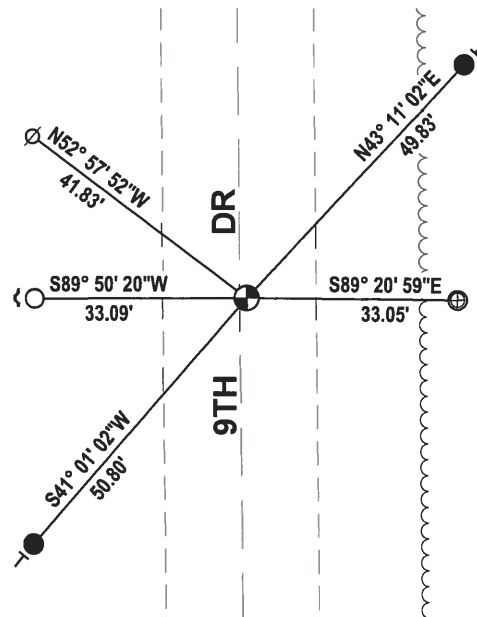
DATE 8-30-18

TIE SKETCH

NOTE: THE CORNER FALLS 1'± EAST OF THE CENTERLINE OF 9TH DR.



MIXED WOODS



MIXED WOODS

- SET 3/4" x 18" IRON REBAR, 1.50#/FT
- FOUND 3/4" IRON ROD
- ⊕ FOUND 1" O.D. IRON PIPE
- ⊕ FOUND HARRISON MONUMENT (BROKEN-TOP)
- ⊘ WITNESS POWER POLE
- ↵ STEEL FENCE POST
- VINYL "T" POST

ADAMS COUNTY

Survey Monument Record

TYPE OF MONUMENT: Standard Harrison

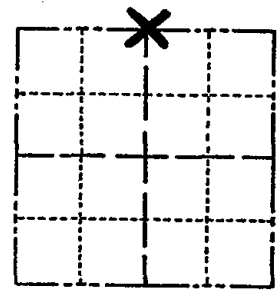
STATE PLANE COORDINATES: N _____
E _____

ELEVATION — M.S.L. DATUM: _____

THETA ANGLE: _____

FIELD BOOK: _____ PAGE _____

CORNER NO. 695
SECTION 23
TOWN 17
RANGE 6



LOCATION
(Indicated by 'X')

SEAL:

BASIS FOR MONUMENT LOCATION

(Use reverse side if necessary)

Show info such as: History of corner, with reference to Vol. and pg, dates, surveyor; exact description of monument replaced; if location computed, by taped or EDM traverse; landowner remarks, etc.

Ran EDM/transit traverse around Sections 23 and 24, and parts of the adjoining sections.

Found Existing 1" Iron Pipe at the North Quarter corner of Section 23. Said pipe did not match the resurvey notes by M.C. Smith on December 8, 1921, but it did match the possession lines quite well.

Remonumented location with Standard Harrison Monument.



CERTIFIED CORRECT:
Dale C Hagen
Registered Land Surveyor
DATE: July 23, 1974

OK 3/13/80 RN-53
ALL OK 7-18-85 DK
1-GONE, 1-NEW 6-5-90 DC-JG
ALL OK 8-1-94 JG-BS
ALL OK, 2-15-02, JG-55

TIE SKETCH *ALL OK 3-14-05 DLAT/LB
OK 1-25-10 SS*

(Show at least four ties)

NOTE: Ties in trees to nail in disc.

