

13  
SECTION

17  
TOWN

06  
RANGE

# ADAMS COUNTY

COUNTY CORNER NO: 72  
ROMPORTOL ID: 41706130020

## PUBLIC LAND SURVEY MONUMENT RECORD

TYPE OF MONUMENT: HARRISON (BROKEN-TOP)  
ADAMS COUNTY COORDINATES, NAD 83 (2007)

N. 208363.028

E. 554805.845

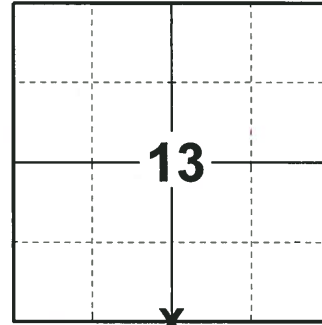
ELEVATION-        DATUM       

FIELD WORK DATE: 08/07/2018

### BASIS FOR MONUMENT LOCATION

1980 - PLS 878 THE RECORD OF HOW THIS LOCATION WAS DETERMINED HAS BEEN LOST. THERE ARE NO OLD RESURVEYS OF RECORD. FOUND A MONUMENT IN PLACE. ACCEPTED AS CORRECT SINCE IT MATCHES POSSESSION LINES QUITE WELL. TIED OUT CORNER.

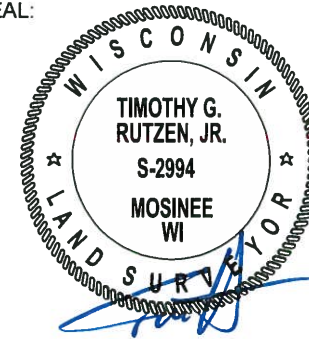
2018 - PLS 2994 FOUND A HARRISON MONUMENT WITH A BROKEN-TOP FLUSH WITH THE ROAD SURFACE, 1 TIE AND 1 WITNESS. THE MONUMENT AGREES WITH THE EXISTING TIE AND WITNESS. ACCEPTED THE HARRISON MONUMENT WITH A BROKEN-TOP AS THE CORNER LOCATION. SET 3 NEW TIES AND MEASURED TO THE TIES AND WITNESS.



**LOCATION**

(INDICATE CORNER BY "X")

SEAL:



DATA SHOWN HERE ON THIS TIE SHEET IS CORRECT AND COMPLETE TO THE BEST OF MY KNOWLEDGE AND BELIEF.

PROFESSIONAL LAND SURVEYOR

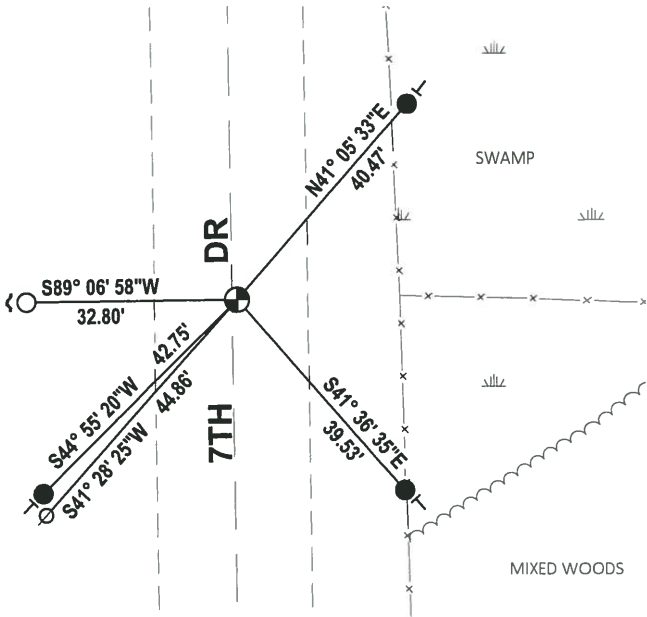
DATE 8-30-18

### TIE SKETCH

NOTE: THE CORNER FALLS 1'± EAST OF THE CENTERLINE OF 7TH DR.



MIXED WOODS

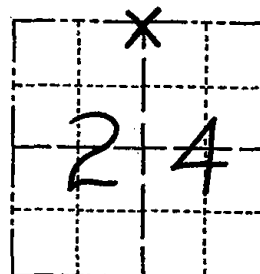


- SET 3/4" x 18" IRON REBAR, 1.50#/FT
- FOUND 3/4" IRON ROD
- ⊕ FOUND HARRISON MONUMENT (BROKEN-TOP)
- ∅ WITNESS POWER POLE
- ↘ STEEL FENCE POST
- VINYL "T" POST

# Government Land Corner Certificate

ADAMS County  
 TYPE OF MONUMENT: HARRISON  
 STATE PLANE COORDINATES: N \_\_\_\_\_  
 E \_\_\_\_\_  
 ELEVATION — M.S.L. DATUM: \_\_\_\_\_  
 THETA ANGLE: \_\_\_\_\_  
 FIELD BOOK: \_\_\_\_\_ PAGE \_\_\_\_\_  
 DRAWN BY: BARRY SULLIVAN

CORNER NO. 72  
 SECTION 24  
 TOWN 17  
 RANGE 6



LOCATION  
 (Indicated by 'X')

SEAL:



DATA SHOWN HERE ON  
 CERTIFIED CORRECT:

*Anthony B. Kiedrowski*  
 Registered Land Surveyor

DATE: 10/28/80

## BASIS FOR MONUMENT LOCATION

Show info such as: History of corner, with reference to Vol. and pg., dates, surveyor; exact description of monument replaced; if location computed, by taped or EDM traverse; landowner remarks, etc. (Use reverse side if necessary)

The record of how this location was determined has been lost. Monument was found in place. Accepted as correct since it matches possession lines quite well. There are no old resurveys of record.

ALL OK 7-16-85 DK  
 2-GONE, 2-NEW 1-31-90 GR-KZ  
 ALL OK 8-2-94 JG-B5  
 ALL OK 2-15-00, JG-55  
 OK 3-1-05 DA-S.S.  
 " 2-4-10 SS

## TIE SKETCH

Show at least four ties, also fence lines, roads, topo, size and type of witness trees and if off road - best way to arrive at corner.

