

23
SECTION

17
TOWN

06
RANGE

ADAMS COUNTY

COUNTY CORNER NO: 79
ROMPORTOL ID: 41706232000

PUBLIC LAND SURVEY MONUMENT RECORD

TYPE OF MONUMENT: HARRISON
ADAMS COUNTY COORDINATES, NAD 83 (2007)

N. 205688.022

E. 552224.122

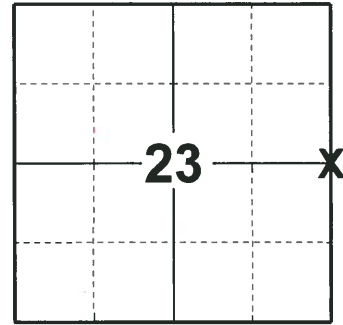
ELEVATION- _____ DATUM _____

FIELD WORK DATE: 08/16/2018

BASIS FOR MONUMENT LOCATION

1974 - PLS 1103 RAN EDM/TRANSIT TRAVERSE OF SECTION 23 AND DETERMINED THE EXTENT OF THE SEARCH AREA. FOUND NO EVIDENCE OF THE CORNER OR ANY OF ITS ACCESSORY MONUMENTS. CALCULATED THE CORNER POSITION ON LINE AND EQUIDISTANT BETWEEN THE SOUTHEAST AND THE NORTHEAST CORNER OF SECTION 23. SET A HARRISON AT THE CALCULATED POSITION AND TIED OUT.

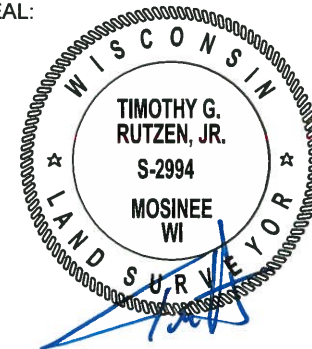
2018 - PLS 2994 FOUND A HARRISON MONUMENT 6" ABOVE THE GROUND SURFACE. FOUND NO EVIDENCE OF ANY OF THE EXISTING TIES OR WITNESSES. VERIFIED THE CORNER TO BE NEAR ON LINE AND EQUIDISTANT WITH THE SECTION CORNERS TO THE NORTH AND THE SOUTH. ACCEPTED THE HARRISON MONUMENT AS THE BEST EVIDENCE OF THE CORNER LOCATION. SET 4 NEW TIES AND MEASURED TO THE TIES.



LOCATION

(INDICATE CORNER BY "X")

SEAL:



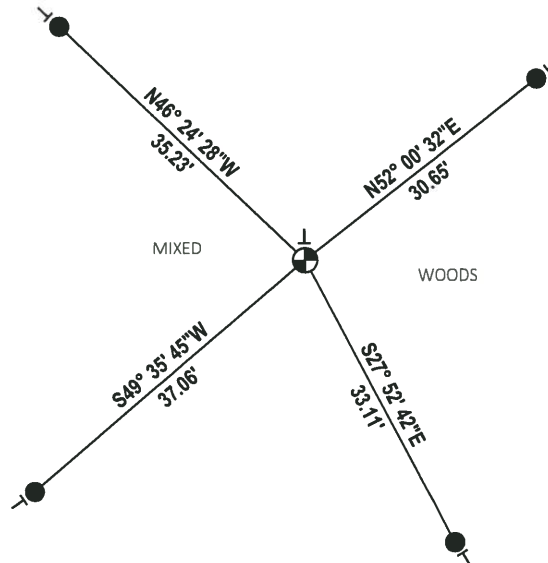
DATA SHOWN HERE ON THIS TIE SHEET IS CORRECT AND COMPLETE TO THE BEST OF MY KNOWLEDGE AND BELIEF.

PROFESSIONAL LAND SURVEYOR

DATE 8-30-18

- TIE SKETCH

NOTE: THE CORNER FALLS 250'± NORTH OF THE OVERHEAD LINE.



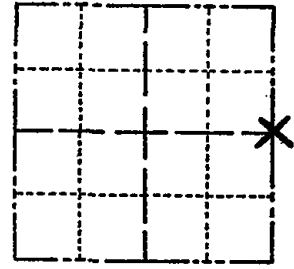
- SET 3/4" x 18" IRON REBAR, 1.50#/FT
- ⊕ FOUND HARRISON MONUMENT
- VINYL "T" POST

ADAMS COUNTY

Survey Monument Record

TYPE OF MONUMENT: Standard Harrison
 STATE PLANE COORDINATES: N _____
 E _____
 ELEVATION — M.S.L. DATUM: _____
 THETA ANGLE: _____
 FIELD BOOK: _____ PAGE _____

CORNER NO. 545
 SECTION 23
 TOWN 17
 RANGE 6



LOCATION
(Indicated by 'X')

BASIS FOR MONUMENT LOCATION

(Use reverse side if necessary)

Show info such as: History of corner, with reference to Vol. and pg. dates, surveyor; exact description of monument replaced; if location computed, by taped or EDM traverse; landowner remarks, etc.

SEAL:



Ran EDM/transit traverse of Section 23 and determined extent of search area.

Could find no evidence of the corner or any of its accessory monuments. Set corner on line and equidistant between Southeast and Northeast corners of Section 23.

Everything o.k. 10-18-75 D.M. - S.S.
 " 3/14/80 RN-SS
 " 9-17-85 GR
 " 1-15-90 SS
 ALL OK 8-3-94 JG-BS
 ALL OK, 4-6-00-JG

CERTIFIED CORRECT:

Dale C. Hagen
 Registered Land Surveyor

DATE: October 2, 1974

TIE SKETCH ^{2-NEW, 3-14-05 JG-DA}

(Show at least four ties)

