

## PUBLIC LAND SURVEY MONUMENT RECORD

TYPE OF MONUMENT: HARRISON (BROKEN-TOP)  
 ADAMS COUNTY COORDINATES, NAD 83 (2007)

N. 205733.575

E. 557469.337

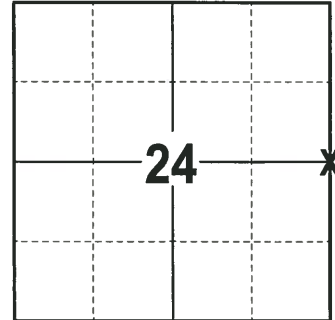
ELEVATION- \_\_\_\_\_ DATUM \_\_\_\_\_

FIELD WORK DATE: 11/30/2017

### BASIS FOR MONUMENT LOCATION

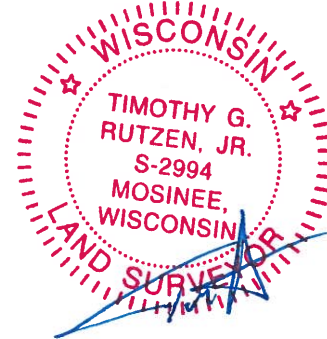
1979 - PLS 1167 SET THE CORNER EQUIDISTANT AND ON LINE BETWEEN ADJACENT SECTION CORNERS. THIS CORNER WAS ESTABLISHED BY TRAVERSING THE EAST LINE OF 24-17-6E. SEARCHED BOTH THE VICINITY OF THE FENCE CORNER AND IN THE LOCATION AS SET AND FOUND NO CORNER EVIDENCE. SET A HARRISON MONUMENT AT THE CALCULATED LOCATION AND TIED OUT.

2017 - PLS 2994 FOUND A HARRISON MONUMENT WITH A BROKEN-TOP 10" BELOW A TIPPED OVER OAK TREE AND 2 WITNESS TREES. THE MONUMENT AGREES WITH THE EXISTING WITNESS TREES. ACCEPTED THE HARRISON MONUMENT WITH A BROKEN-TOP AS THE CORNER LOCATION. SET 4 NEW TIES AND MEASURED TO THE TIES AND WITNESS TREES.



**LOCATION**  
 (INDICATE CORNER BY "X")

SEAL:



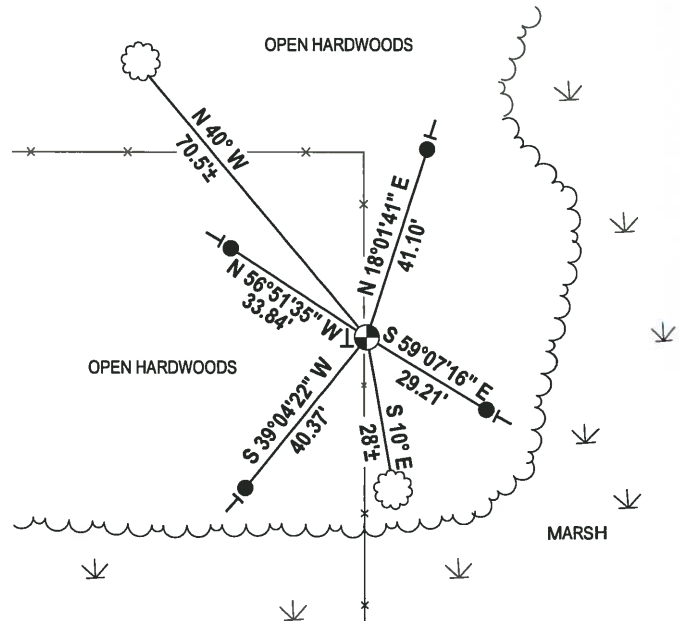
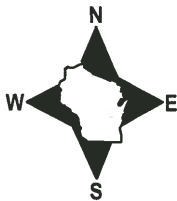
DATA SHOWN HERE ON THIS TIE SHEET IS CORRECT AND COMPLETE TO THE BEST OF MY KNOWLEDGE AND BELIEF.

PROFESSIONAL LAND SURVEYOR

DATE 1-4-18

### - TIE SKETCH

NOTE: THE CORNER FALLS 38± SOUTH OF THE FENCE CORNER.

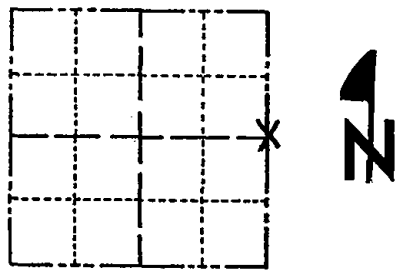


- 3/4" x 18" IRON REBAR SET, 1.50#/FT
- ⊕ HARRISON (BROKEN-TOP) FOUND
- VINYL "T" POST
- ☁ WITNESS TREE FOUND

# Government Land Corner Certificate

Adams County  
 TYPE OF MONUMENT: HARRISON  
 STATE PLANE COORDINATES: N \_\_\_\_\_  
 E \_\_\_\_\_  
 ELEVATION — M.S.L. DATUM: \_\_\_\_\_  
 THETA ANGLE: \_\_\_\_\_  
 FIELD BOOK: LL PAGE \_\_\_\_\_  
 DRAWN BY: Basler

CORNER NO. 80  
 SECTION 24  
 TOWN 17  
 RANGE 6E



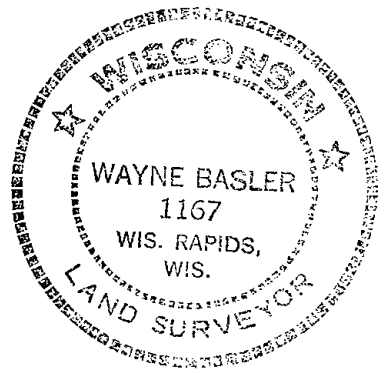
LOCATION  
(Indicated by 'X')

## BASIS FOR MONUMENT LOCATION

Show info such as: History of corner, with reference to Vol. and pg., dates, surveyor; exact description of monument replaced; if location computed, by taped or EDM traverse; landowner remarks, etc. (Use reverse side if necessary)

Set Corner equidistant and on line between adjacent Section Corners.  
 This Corner established by traversing the East Line 24-17-6E.  
 We searched both the vicinity of the fence corner and in Corner as set, but found no marker evidence.

SEAL:



DATA SHOWN HERE ON CERTIFIED CORRECT:

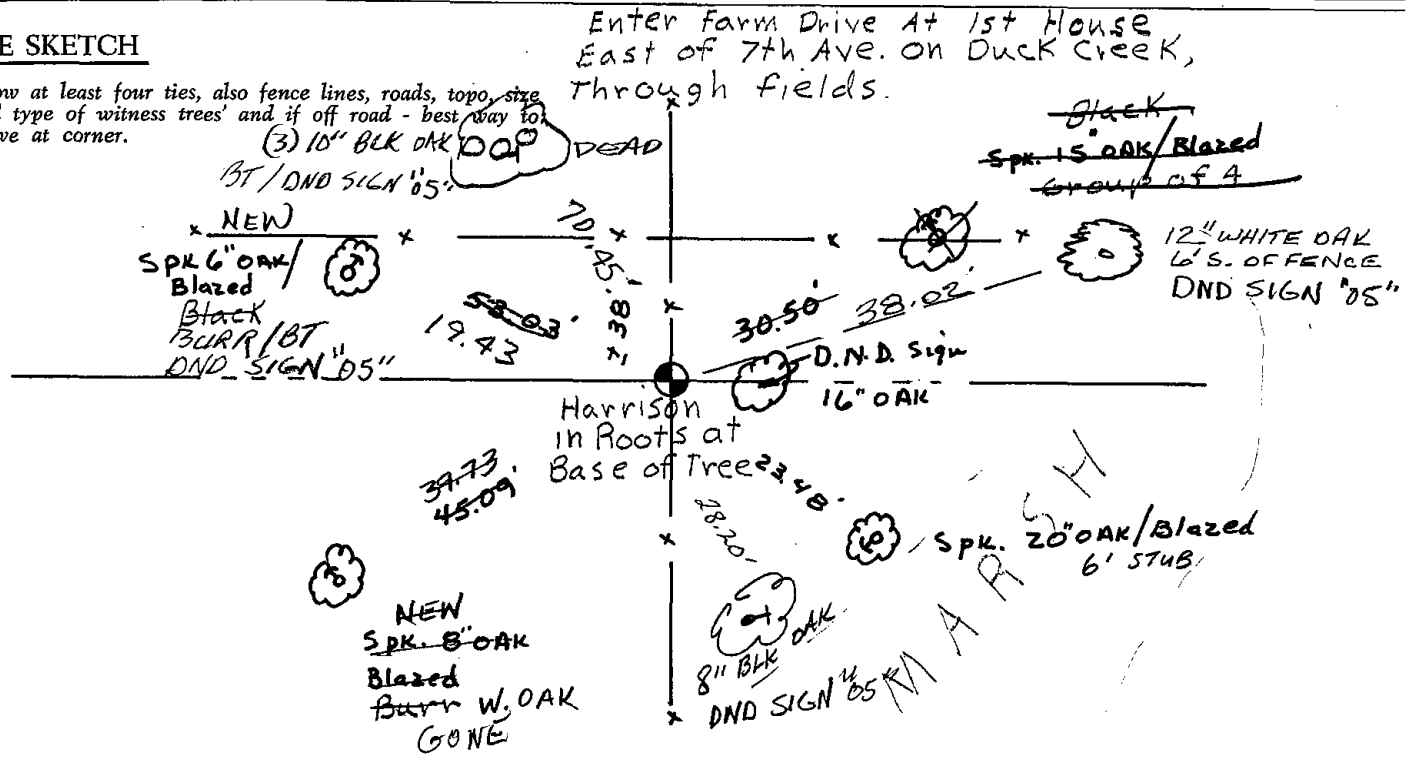
Wayne Basler  
Registered Land Surveyor

DATE: 12-27-79

OK 9-25-85 55-MB  
 1 NEW 2-14-90 KZ-GR  
 OK 4/13/95 CR-JG  
 3-NEW, MON. OK, 12-06-00 -JG  
 2-GONE, 2-NEW, 3-2-05, JG-JS  
 02-10-10 - OAK TREE UPROOTED - MON. DISTURBED  
 TIES COME IN TO ROOT BALL - TIES REMAIN

## TIE SKETCH

Show at least four ties, also fence lines, roads, topo, size and type of witness trees' and if off road - best way to arrive at corner.



Enter Farm Drive at 1st House East of 7th Ave. on Duck Creek, Through fields.

Black  
 SPK 15 OAK/Blazed  
 Group of 4  
 12" WHITE OAK  
 6' S. OF FENCE  
 DND SIGN '05"

D.N.D. Sign  
16" OAK

SPK 20" OAK/Blazed  
6' STUB

NEW  
 SPK 8" OAK  
 Blazed  
 Burr W. OAK  
 GONE

8" BLK  
 DND SIGN '05"

