

20 SECTION 17 TOWN 06 RANGE

# ADAMS COUNTY

COUNTY CORNER NO: 84  
ROMPORTOL ID: 41706200020

## PUBLIC LAND SURVEY MONUMENT RECORD

TYPE OF MONUMENT: HARRISON  
ADAMS COUNTY COORDINATES, NAD 83 (2007)

N. 202970.427

E. 533764.926

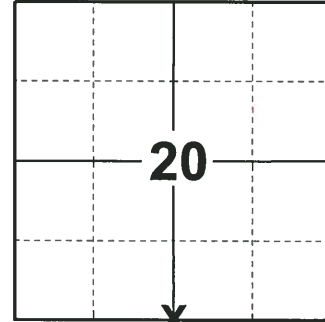
ELEVATION- \_\_\_\_\_ DATUM \_\_\_\_\_

FIELD WORK DATE: 10/16/2018

### BASIS FOR MONUMENT LOCATION

1973 - PLS 878 FOUND NO EVIDENCE OF THE CORNER. CALCULATED THE CORNER POSITION ON A STRAIGHT LINE AND EQUIDISTANT BETWEEN ADJACENT SECTION CORNERS. SET A HARRISON MONUMENT AT THE CALCULATED LOCATION AND TIED OUT.

2018 - PLS 2675 FOUND A HARRISON MONUMENT 4" BELOW THE GROUND SURFACE 1 TIE AND 1 WITNESS TREE STUMP. THE MONUMENT AGREES WITH THE EXISTING TIE AND WITNESS. ACCEPTED THE HARRISON MONUMENT AS THE CORNER LOCATION. SET 4 NEW TIES AND MEASURED TO THE TIES AND WITNESS TREE STUMP.



LOCATION

(INDICATE CORNER BY "X")

SEAL:



DATA SHOWN HERE ON THIS TIE SHEET IS CORRECT AND COMPLETE TO THE BEST OF MY KNOWLEDGE AND BELIEF.

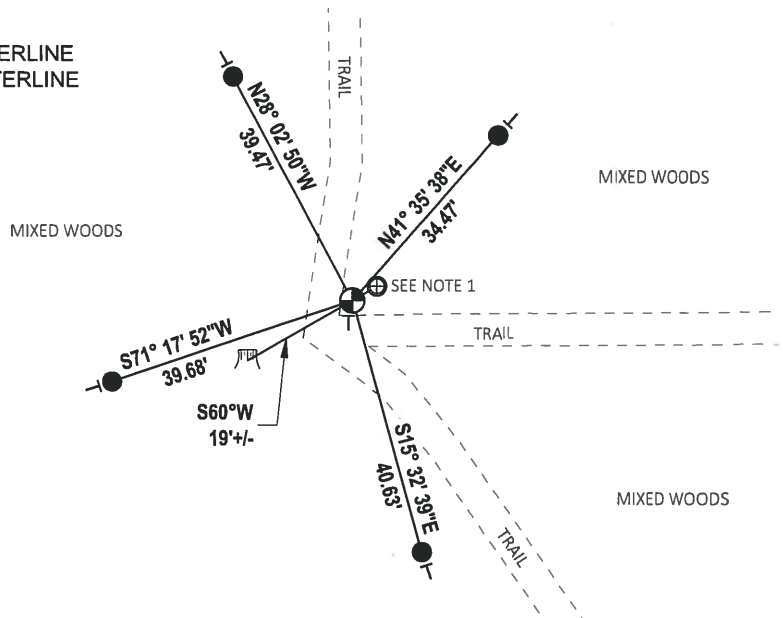
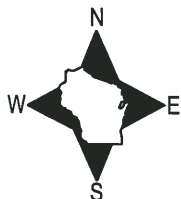
PROFESSIONAL LAND SURVEYOR

DATE 12/4/2018

### TIE SKETCH

NOTE 1: THE 1" O.D. IRON PIPE IS N59° 55' 45"E, 4.45' FROM THE CORNER LOCATION.

NOTE 2: THE CORNER FALLS 5± NORTH OF THE CENTERLINE OF THE EAST-WEST TRAIL AND 4± EAST OF THE CENTERLINE OF THE NORTH-SOUTH TRAIL,



- SET 3/4" x 18" IRON REBAR, 1.50#/FT
- ⊕ FOUND 1" O.D. IRON PIPE
- ⊙ FOUND HARRISON MONUMENT
- | VINYL "T" POST
- ▣ WITNESS TREE STUMP

ADAMS COUNTY

Survey Monument Record

TYPE OF MONUMENT: Harrison standard

STATE PLANE COORDINATES: N \_\_\_\_\_

E \_\_\_\_\_

ELEVATION — M.S.L. DATUM: \_\_\_\_\_

THETA ANGLE: \_\_\_\_\_

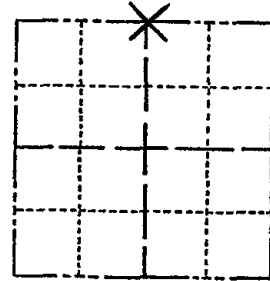
FIELD BOOK: 108 PAGE 45

CORNER NO. 287

SECTION 29

TOWN 17

RANGE 6



LOCATION  
(Indicated by 'X')

SEAL:

BASIS FOR MONUMENT LOCATION

(Use reverse side if necessary)

Show info such as: History of corner, with reference to Vol. and pg, dates, surveyor; exact description of monument replaced; if location computed, by taped or EDM traverse; landowner remarks, etc.

Set on a straight line equidistant between section corners. No evidence of corner found.



Everything in good shape 11/12/75 DM-SS  
Everything OK Aug. 85 GR-SS  
OK 1-11-90 SS  
2-GONE, 3-NEW, MON. OK, 4-4-00 JG  
ALL OK, 3-22-05, JG  
" " 4-8-10 SS

CERTIFIED CORRECT:

*Anthony B. Kiedrowski*  
Registered Land Surveyor

DATE: 9/18/73

TIE SKETCH

(Show at least four ties)

Ties are to nail and disc.

