

21 SECTION    17 TOWN    06 RANGE

# ADAMS COUNTY

COUNTY CORNER NO: 86  
 ROMPORTOL ID: 41706210020

## PUBLIC LAND SURVEY MONUMENT RECORD

TYPE OF MONUMENT: 1-1/4" IRON ROD  
 ADAMS COUNTY COORDINATES, NAD 83 (2007)

N. 202951.145

E. 539077.554

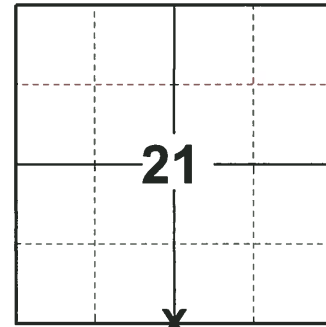
ELEVATION- \_\_\_\_\_ DATUM \_\_\_\_\_

FIELD WORK DATE: 09/17/2018

### BASIS FOR MONUMENT LOCATION

1980 - PLS 1167 CALCULATED THE CORNER LOCATION EQUIDISTANT ON A STRAIGHT LINE BETWEEN ADJACENT SECTION CORNERS. AN EXTENSIVE SEARCH (AFTER EDM MEASURING) REVEALED NO CONCLUSIVE EVIDENCE OF THE LOCATION OF THE ORIGINAL CORNER OR ANY REMONUMENTATION. SET A 3/4" IRON ROD AT THE CALCULATED LOCATION AND TIED OUT.

2018 - PLS 2675 FOUND A 1-1/4" IRON ROD AND 2 WITNESSES. THE MONUMENT AGREES WITH THE EXISTING WITNESSES. NO RECORDS ARE AVAILABLE TO INDICATE HOW THE CORNER MONUMENT WENT FROM A 3/4" IRON ROD TO A 1-1/4" IRON ROD. THE MEASUREMENTS TO THE SW CORNER AND THE SE CORNER OF SECTION 21 FIT WITHIN 0.11 FEET. ACCEPTED THE 1-1/4" IRON ROD AS THE CORNER LOCATION. SET 4 NEW TIES AND MEASURED TO THE TIES AND WITNESSES.



**LOCATION**

(INDICATE CORNER BY "X")

SEAL:



DATA SHOWN HERE ON THIS TIE SHEET IS CORRECT AND COMPLETE TO THE BEST OF MY KNOWLEDGE AND BELIEF.

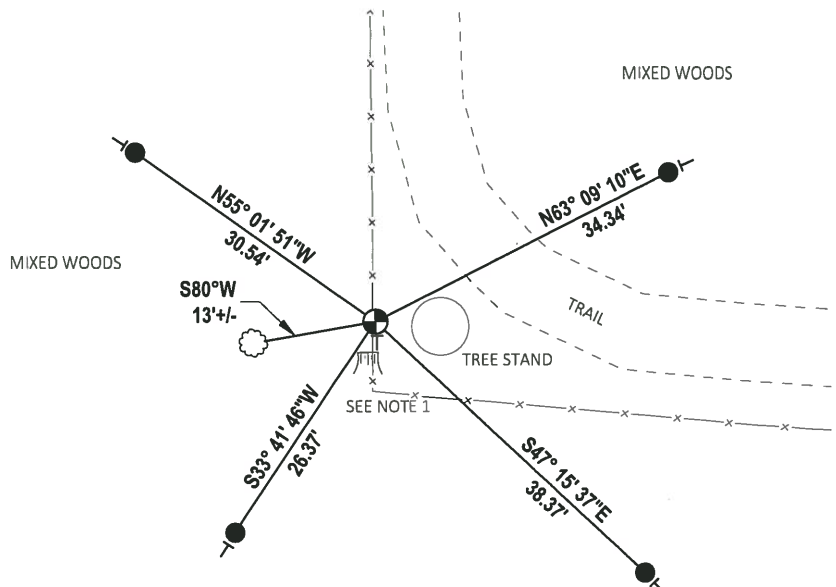
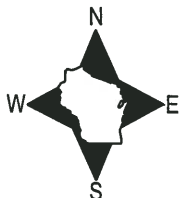
PROFESSIONAL LAND SURVEYOR

DATE 12/4/2018

### - TIE SKETCH

NOTE 1: THE WITNESS TREE STUMP FALLS S22°W 3'± OF THE CORNER LOCATION.

NOTE 2: THE CORNER FALLS 27'± WEST OF THE CENTERLINE OF THE TRAIL.

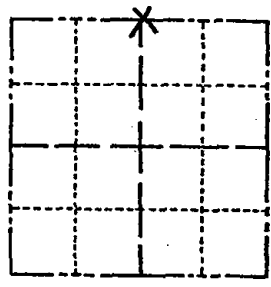


- SET 3/4" x 18" IRON REBAR, 1.50#/FT
- ⊕ FOUND 1-1/4" IRON ROD
- VINYL "T" POST
- ⌘ WITNESS TREE STUMP
- ☼ WITNESS TREE

# Government Land Corner Certificate

Adams County  
 TYPE OF MONUMENT: 3/4" iron rod  
 STATE PLANE COORDINATES: N \_\_\_\_\_  
 E \_\_\_\_\_  
 ELEVATION — M.S.L. DATUM: \_\_\_\_\_  
 THETA ANGLE: \_\_\_\_\_  
 FIELD BOOK: LL. PAGE \_\_\_\_\_  
 DRAWN BY: Basler

CORNER NO. 86  
 SECTION 28  
 TOWN 17  
 RANGE 6E



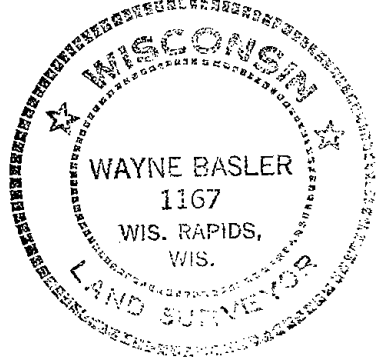
LOCATION  
(Indicated by 'X')

## BASIS FOR MONUMENT LOCATION

Show info such as: History of corner, with reference to Vol. and pg., dates, surveyor; exact description of monument replaced; if location computed, by taped or EDM traverse; landowner remarks, etc. (Use reverse side if necessary)

SEAL:

Set Corner equidistant on a straight line between adjacent section corners, an extensive search (after EDM measuring) revealed no conclusive evidence as to the location of the original corner or any remonumentation thereof.



DATA SHOWN HERE ON  
CERTIFIED CORRECT:

Wayne Basler  
Registered Land Surveyor

DATE: 3-3-80

9-17-85 GR-SS  
 1-10-90 OK SS  
 ALL OK 8-1-94 JG-BS  
 ALL OK, 2-14-00, JG

## TIE SKETCH

Show at least four ties, also fence lines, roads, topo, size and type of witness trees and if off road - best way to arrive at corner.

