

22
SECTION

17
TOWN

06
RANGE

ADAMS COUNTY

COUNTY CORNER NO: 88

ROMPORTOL ID: 41706220020

PUBLIC LAND SURVEY MONUMENT RECORD

TYPE OF MONUMENT: 2-3/8" O.D. IRON PIPE W/ALUMINUM CAP

ADAMS COUNTY COORDINATES, NAD 83 (2007)

N. 202987.464

E. 544339.326

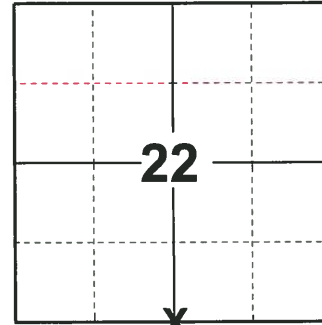
ELEVATION- _____ DATUM _____

FIELD WORK DATE: 09/19/2018

BASIS FOR MONUMENT LOCATION

1980 - PLS 1167 CALCULATED THE CORNER LOCATION EQUIDISTANT ON LINE BETWEEN ADJACENT SECTION CORNERS. AN EXTENSIVE SEARCH REVEALED NO CONCLUSIVE EVIDENCE AS TO THE LOCATION OF THE ORIGINAL CORNER OR ANY REMONUMENTATION. SET A 54"x2" GAL. PIPE W/ALUMINUM CAP AT THE CALCULATED POSITION AND TIED OUT.

2018 - PLS 2675 FOUND A 2-3/8" O.D. IRON PIPE WITH AN ALUMINUM CAP 18" ABOVE THE GROUND SURFACE. FOUND NO EVIDENCE OF ANY OF THE EXISTING TIES OR WITNESSES. VERIFIED THE 2-3/8" O.D. IRON PIPE WITH AN ALUMINUM CAP TO BE ON LINE AND EQUIDISTANT BETWEEN THE ADJACENT SECTION CORNERS. ACCEPTED THE 2-3/8" O.D. IRON PIPE WITH AN ALUMINUM CAP AS THE BEST EVIDENCE OF THE CORNER LOCATION. SET 4 NEW TIES AND MEASURED TO THE TIES.



LOCATION

(INDICATE CORNER BY "X")

SEAL:



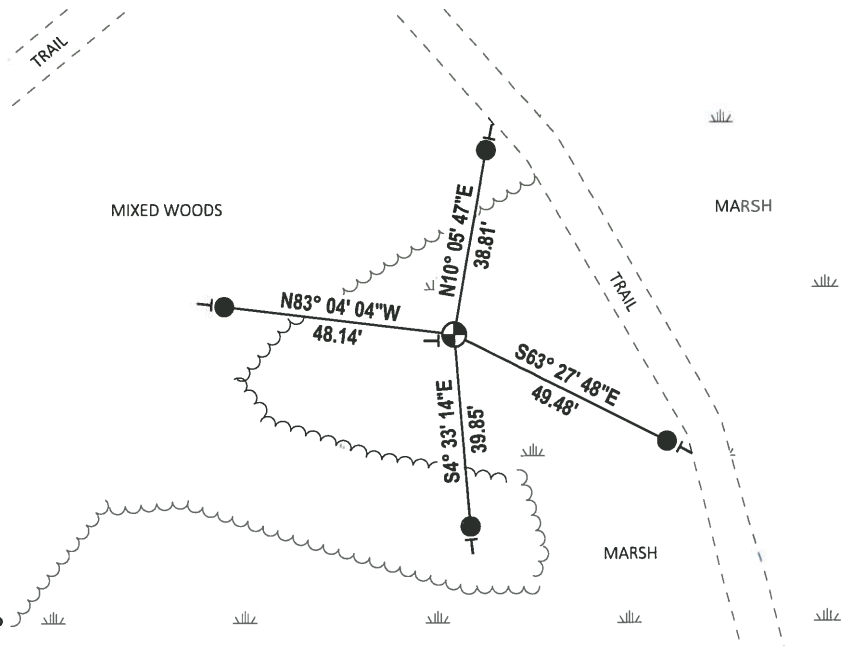
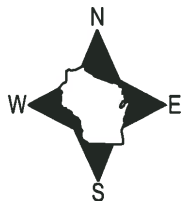
DATA SHOWN HERE ON THIS TIE SHEET IS CORRECT AND COMPLETE TO THE BEST OF MY KNOWLEDGE AND BELIEF.

PROFESSIONAL LAND SURVEYOR

DATE 12/4/2018

- TIE SKETCH

NOTE: THE CORNER FALLS 35'± WEST OF THE CENTERLINE OF THE TRAIL.

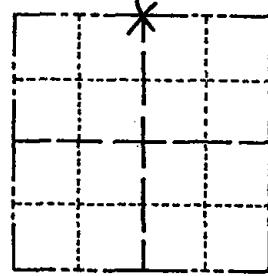


- SET 3/4" x 18" IRON REBAR, 1.50#/FT
- ⊙ FOUND 2-3/8" O.D. IRON PIPE W/ALUMINUM CAP
- VINYL "T" POST

Government Land Corner Certificate

Adams County
 TYPE OF MONUMENT: 54"x2" Gal. Pipe w/aluminum Cap.
 STATE PLANE COORDINATES: N _____
 E _____
 ELEVATION — M.S.L. DATUM: _____
 THETA ANGLE: _____
 FIELD BOOK: LL. PAGE _____
 DRAWN BY: Basler

CORNER NO. 88
 SECTION 27
 TOWN 17
 RANGE 6E



LOCATION
(Indicated by 'X')

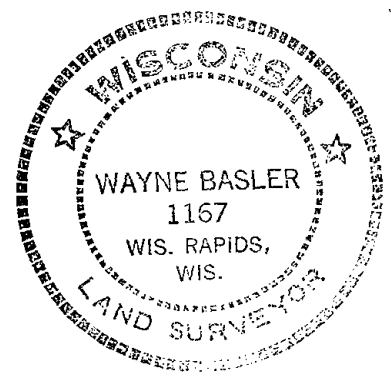
BASIS FOR MONUMENT LOCATION

Show info such as: History of corner, with reference to Vol. and pg., dates, surveyor; exact description of monument replaced; if location computed, by taped or EDM traverse; landowner remarks, etc. (Use reverse side if necessary)

Set Corner equidistant on line between adjacent section corners, an extensive search revealed no conclusive evidence as to the location of the original corner or any remonumentation thereof.

1-10-90 OK SS
 ALL OK, 12-06-00 - JG
 2- NEW TIES, 3-31-05 SS
 2 NEW TIES 1-20-10 SS

SEAL:



DATA SHOWN HERE ON
CERTIFIED CORRECT.

Wayne Basler
Registered Land Surveyor

DATE: 3-3-80

TIE SKETCH

TAKE BRUSHED LINE TO TRAIL EAST

Show at least four ties, also fence lines, roads, topo, size and type of witness trees' and if off road - best way to arrive at corner.

