

28 SECTION 17 TOWN 06 RANGE

ADAMS COUNTY

COUNTY CORNER NO: 97
 ROMPORTOL ID: 41706282000

PUBLIC LAND SURVEY MONUMENT RECORD

TYPE OF MONUMENT: HARRISON (BROKEN-TOP)
 ADAMS COUNTY COORDINATES, NAD 83 (2007)

N. 200293.301

E. 541740.241

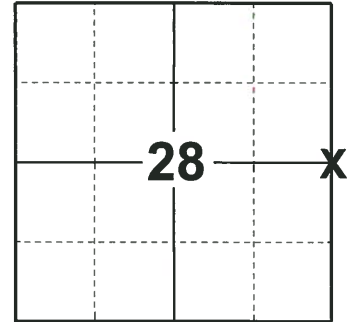
ELEVATION- - - - DATUM - - - -

FIELD WORK DATE: 08/30/2018

BASIS FOR MONUMENT LOCATION

1978 - PLS 878 ANTHONY B. KIEDROWSKI DUG WITH A BACKHOE AND FOUND A 8"X8"X10" SANDSTONE, 1' WEST AND 2' SOUTH OF AN EXISTING 1-1/4"X22" IRON PIPE. THE STONE WAS ACCEPTED AS THE CORNER LOCATION. LOWERED THE STONE AND SET A HARRISON ABOVE IT. TIED OUT CORNER.

2018 - PLS 2675 FOUND A HARRISON MONUMENT WITH A BROKEN-TOP 6" BELOW THE ROAD SURFACE AND 1 PROPERTY IRON. FOUND NO EVIDENCE OF ANY OF THE EXISTING TIES OR WITNESSES. ACCEPTED THE HARRISON MONUMENT WITH A BROKEN-TOP AS THE BEST EVIDENCE OF THE CORNER LOCATION. SET 3 NEW TIES AND MEASURED TO THE TIES AND PROPERTY IRON.



LOCATION
(INDICATE CORNER BY "X")

SEAL:



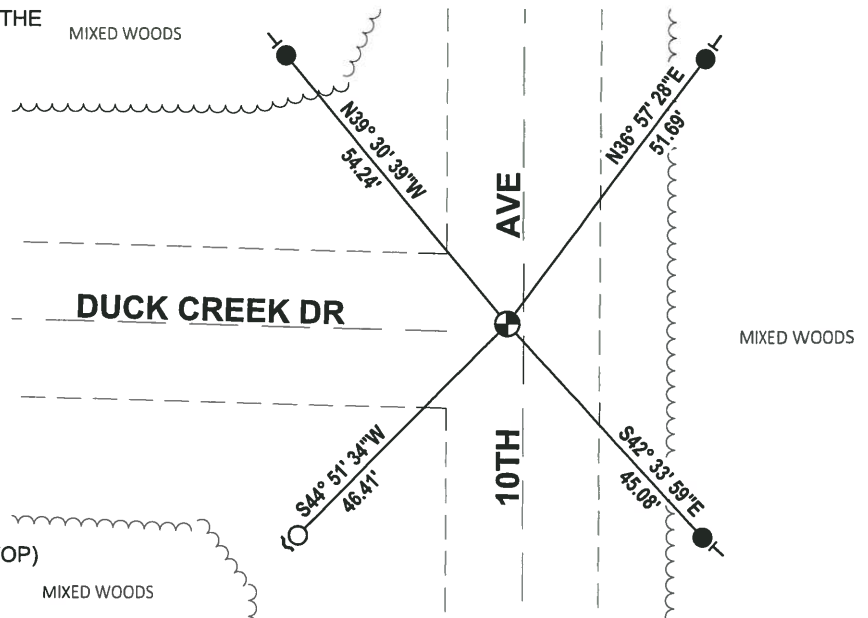
DATA SHOWN HERE ON THIS TIE SHEET IS CORRECT AND COMPLETE TO THE BEST OF MY KNOWLEDGE AND BELIEF.

PROFESSIONAL LAND SURVEYOR

DATE 12/4/2018

TIE SKETCH

NOTE: THE CORNER FALLS 3'± WEST OF THE CENTERLINE OF 10TH AVE AND 1'± NORTH OF THE CENTERLINE OF DUCK CREEK DR.

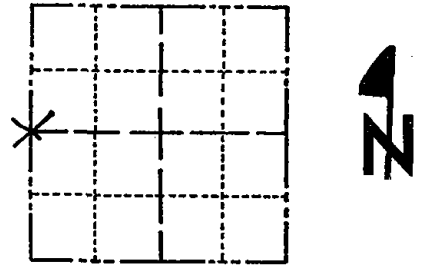


- SET 3/4" x 18" IRON REBAR, 1.50#/FT
- FOUND 3/4" IRON ROD
- ⊕ FOUND HARRISON MONUMENT (BROKEN-TOP)
- ~ STEEL FENCE POST
- VINYL "T" POST

Government Land Corner Certificate

ADAMS County
 TYPE OF MONUMENT: Harrison Monument
 STATE PLANE COORDINATES: N _____
 E _____
 ELEVATION — M.S.L. DATUM: _____
 THETA ANGLE: FB 102 PG 5
 FIELD BOOK: 57 PAGE 78
 DRAWN BY: G. Rhinehart

CORNER NO. 97
 SECTION 27
 TOWN 17
 RANGE 6



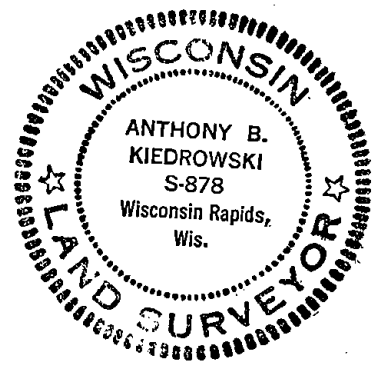
LOCATION
(Indicated by 'X')

BASIS FOR MONUMENT LOCATION

Show info such as: History of corner, with reference to Vol. and pg., dates, surveyor; exact description of monument replaced; if location computed, by taped or EDM traverse; landowner remarks, etc. (Use reverse side if necessary)

Anthony B. Kiedrowski dug with backhoe and found a 8"X8"X10" Sandstone, 1' West and 2' South of an existing 1 1/4" X 22" iron pipe,. The Stone was accepted as the corner. The Stone was lowered and harrison set.

SEAL:



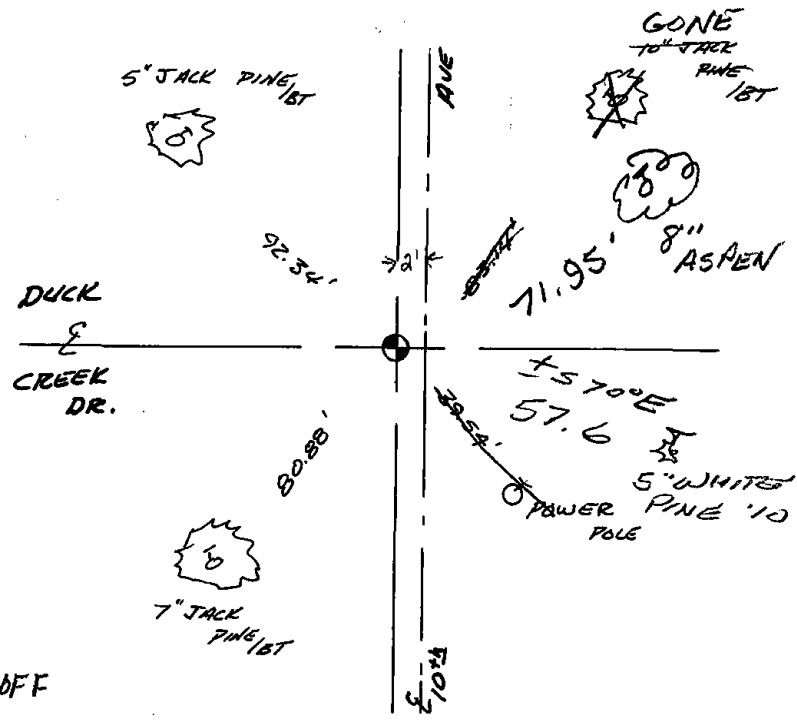
DATA SHOWN HERE ON CERTIFIED CORRECT:

Anthony B. Kiedrowski
 Registered Land Surveyor

DATE: 12/5/28

TIE SKETCH

Show at least four ties, also fence lines, roads, topo, size and type of witness trees' and if off road - best way to arrive at corner.



MAINTENANCE RECORD

Date	Init.	Remarks
7-18-85	DK	TOP Broken Ties OK
1-11-90	SS	" " " "
8-4-94	JG BS	" " " "
2-14-00	JG	1-GONE, 1-NEW, TOP BROKEN OFF
1-28-05	JG	OK
1-20-10	SS	1 NEW TIE