

27 SECTION 17 TOWN 06 RANGE

# ADAMS COUNTY

COUNTY CORNER NO: 98  
 ROMPORTOL ID: 41706272000

## PUBLIC LAND SURVEY MONUMENT RECORD

TYPE OF MONUMENT: 3/4" IRON ROD  
 ADAMS COUNTY COORDINATES, NAD 83 (2007)

N. 200377.420

E. 547005.457

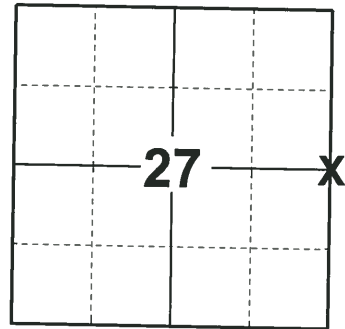
ELEVATION- \_\_\_\_\_ DATUM \_\_\_\_\_

FIELD WORK DATE: 10/16/2018

### BASIS FOR MONUMENT LOCATION

1980 - PLS 1167 AN EXTENSIVE SEARCH REVEALED NO CONCLUSIVE EVIDENCE OF THE LOCATION OF THE ORIGINAL CORNER OR ANY REMONUMENTATION. CALCULATED THE CORNER LOCATION EQUIDISTANT AND ON LINE BETWEEN ADJACENT SECTION CORNERS AND TIED OUT.

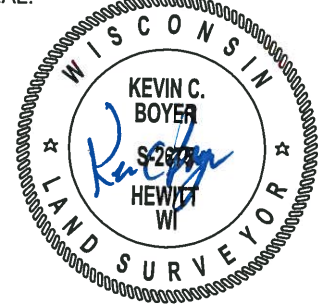
2018 - PLS 2675 FOUND A 3/4" IRON ROD 6" BELOW THE GROUND SURFACE AND 1 WITNESS TREE. THE MONUMENT AGREES WITH THE EXISTING WITNESS TREE. ACCEPTED THE 3/4" IRON ROD AS THE CORNER LOCATION. SET 4 NEW TIES AND MEASURED TO THE TIES AND WITNESS TREE.



### LOCATION

(INDICATE CORNER BY "X")

SEAL:



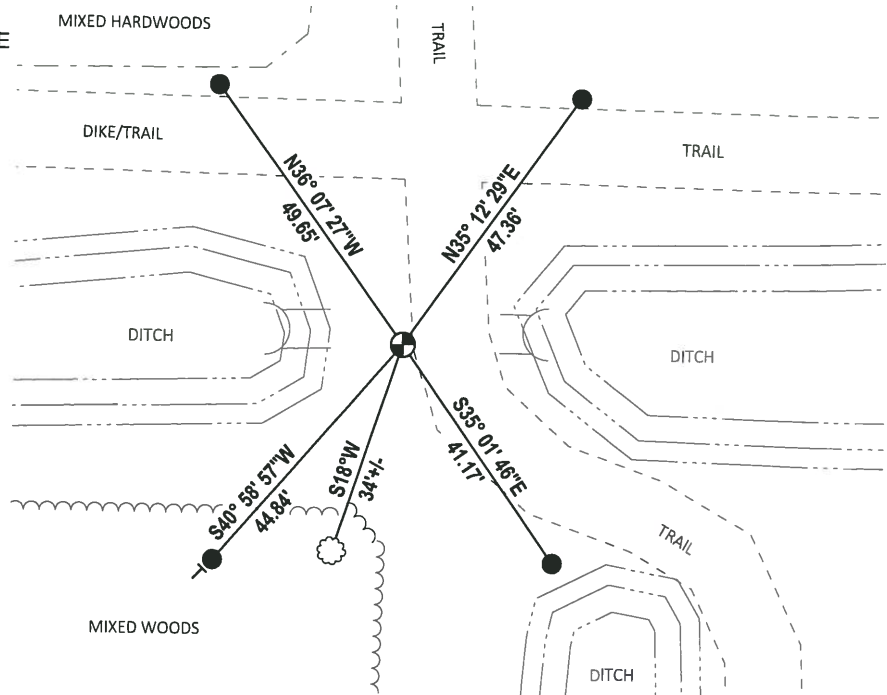
DATA SHOWN HERE ON THIS TIE SHEET IS CORRECT AND COMPLETE TO THE BEST OF MY KNOWLEDGE AND BELIEF.

PROFESSIONAL LAND SURVEYOR

DATE 12/4/2018

### TIE SKETCH

NOTE: THE CORNER FALLS 7'± WEST OF THE CENTERLINE OF THE TRAIL.

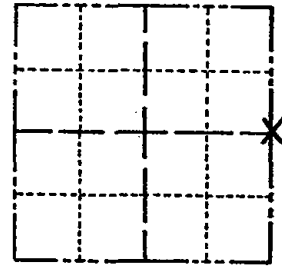


- SET 3/4" x 18" IRON REBAR, 1.50#/FT
- ⊕ FOUND 3/4" IRON ROD
- VINYL "T" POST
- ☉ WITNESS TREE

# Government Land Corner Certificate

Adams County 3/4" Rod  
 TYPE OF MONUMENT: 54"x2" Gal. Pipe w/aluminum Cap.  
 STATE PLANE COORDINATES: N \_\_\_\_\_  
 E \_\_\_\_\_  
 ELEVATION — M.S.L. DATUM: \_\_\_\_\_  
 THETA ANGLE: \_\_\_\_\_  
 FIELD BOOK: LL. PAGE \_\_\_\_\_  
 DRAWN BY: Basler

CORNER NO. 98  
 SECTION 27  
 TOWN 17  
 RANGE 6E



LOCATION  
(Indicated by 'X')

## BASIS FOR MONUMENT LOCATION

Show info such as: History of corner, with reference to Vol. and pg., dates, surveyor; exact description of monument replaced; if location computed, by taped or EDM traverse; landowner remarks, etc. (Use reverse side if necessary)

Set Corner equidistant on line between adjacent section corners, an extensive search revealed no conclusive evidence as to the location of the original corner or any remonumentation thereof.

ALL OK 2-14-90 KZ-GR  
 OK - GR-19 2/13/95  
 1-GONE, 2-NEW TIES 4-17-95 JG-CR  
 4-NEW DISTANCES, 4-11-00, - JG  
 ALL OK, 3-22-05, JG

SEAL:



DATA SHOWN HERE ON  
CERTIFIED CORRECT:

Wayne Basler  
Registered Land Surveyor

DATE: 3-3-80

OVER

## TIE SKETCH

Show at least four ties, also fence lines, roads, topo, size and type of witness trees and if off road - best way to arrive at corner.

1995 NO OTHER TIES  
AVAILABLE MON OIL

