

25 SECTION 17 TOWN 06 RANGE

ADAMS COUNTY

COUNTY CORNER NO: 100
ROMPORTOL ID: 41706252000

PUBLIC LAND SURVEY MONUMENT RECORD

TYPE OF MONUMENT: HARRISON
ADAMS COUNTY COORDINATES, NAD 83 (2007)

N. 200456.175

E. 557577.459

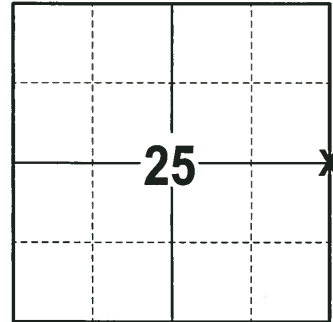
ELEVATION- - - DATUM - -

FIELD WORK DATE: 11/27/2017

BASIS FOR MONUMENT LOCATION

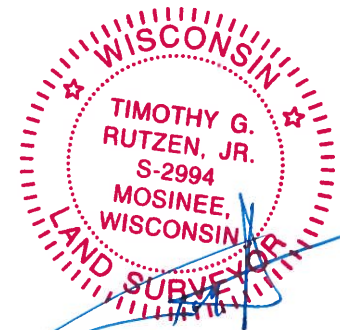
1979 - PLS 1167 SET THE CORNER FROM STUMPS OF THE ORIGINAL BEARING TREES IN THE SW QUAD AND SE QUAD. THE LOCATION FITS THE POSSESSION LINES. RAN AN E.D.M. TRAVERSE OF 25-17-6E AND SET A HARRISON MONUMENT AT THE CALCULATED LOCATION PER THE BEARING TREES AND TIED OUT.

2017 - PLS 2994 FOUND A HARRISON MONUMENT 1" BELOW THE ROAD SURFACE AND 1 PROPERTY IRON THAT WAS USED AS A TIE. THE MONUMENT AGREES WITH THE PROPERTY IRON. ACCEPTED THE HARRISON MONUMENT AS THE CALCULATED LOCATION. SET 3 NEW TIES AND MEASURED TO THE TIES AND PROPERTY IRON.



LOCATION
(INDICATE CORNER BY "X")

SEAL:



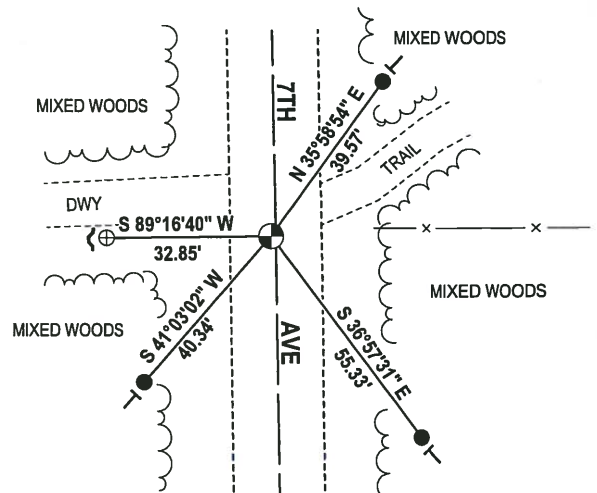
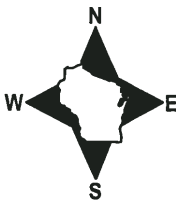
DATA SHOWN HERE ON THIS TIE SHEET IS CORRECT AND COMPLETE TO THE BEST OF MY KNOWLEDGE AND BELIEF.

PROFESSIONAL LAND SURVEYOR

DATE 12-21-17

- TIE SKETCH -

NOTE: THE CORNER FALLS 1½ WEST OF THE CENTERLINE OF 7TH AVE.

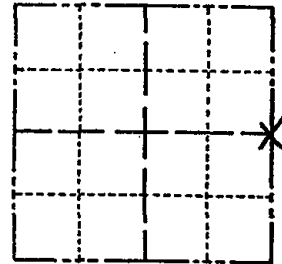


- 3/4" x 18" IRON REBAR SET, 1.50#/FT
- ⊕ 2-3/8" O.D. IROD PIPE FOUND
- ⊙ HARRISON FOUND
- ~ STEEL FENCE POST
- VINYL "T" POST

Government Land Corner Certificate

Adams County
 TYPE OF MONUMENT: Harrison
 STATE PLANE COORDINATES: N _____
 E _____
 ELEVATION — M.S.L. DATUM: _____
 THETA ANGLE: _____
 FIELD BOOK: 46 PAGE _____
 DRAWN BY: Basler

CORNER NO. 100
 SECTION 25
 TOWN 17
 RANGE 6E.



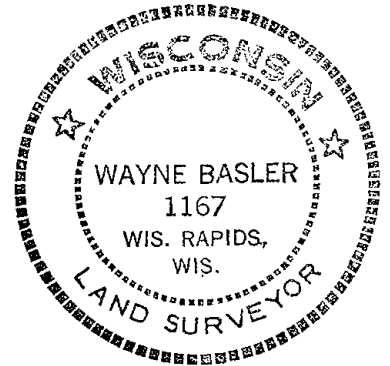
LOCATION
(Indicated by 'X')

BASIS FOR MONUMENT LOCATION

Show info such as: History of corner, with reference to Vol. and pg., dates, surveyor; exact description of monument replaced; if location computed, by taped or EDM traverse; landowner remarks, etc. (Use reverse side if necessary)

Set Corner from stumps of original bearing trees in SW Quad. & SE Quad. Fits possession lines. Ran E.D.M. Traverse of 25-17-6E.

SEAL:



DATA SHOWN HERE ON
CERTIFIED CORRECT:

Wayne Basler
Registered Land Surveyor

DATE: 12-27-79

Found P.K. - NO Harrison
 Ties OK 9-25-85 SS-MB
 FOUND PK - NO HARRISON, TIES OK - JG
 OK GR-JG 2/13/95
 ALL OK 2-15-00, JG-SS
 1-NEW, 3-2-05 - JG-JS
 OK 2-4-10 SS

TIE SKETCH

Show at least four ties, also fence lines, roads, topo, size and type of witness trees and if off road - best way to arrive at corner.

