

29
SECTION

17
TOWN

06
RANGE

ADAMS COUNTY

COUNTY CORNER NO: 105

ROMPORTOL ID: 41706290000

PUBLIC LAND SURVEY MONUMENT RECORD

TYPE OF MONUMENT: HARRISON (BROKEN-TOP)

ADAMS COUNTY COORDINATES, NAD 83 (2007)

N. 197649.529

E. 536453.627

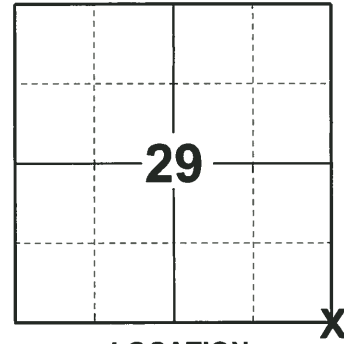
ELEVATION- DATUM

FIELD WORK DATE: 09/17/2018

BASIS FOR MONUMENT LOCATION

1973 - PLS 878 REPLACED THE RAILROAD SPIKE AT THE CORNER LOCATION WITH A HARRISON AND TIED OUT. THIS LOCATION MATCHED POWER CO. SURVEY OF SUBSTATION. TRAVERSE OF THE ENTIRE SECTION TO VERIFY THE LOCATION.

2018 - PLS 2675 FOUND A HARRISON MONUMENT WITH A BROKEN-TOP 12" BELOW THE ROAD SURFACE, 1 TIE AND 2 WITNESSES. THE MONUMENT AGREES WITH THE EXISTING TIE AND WITNESSES. ACCEPTED THE HARRISON MONUMENT WITH A BROKEN-TOP AS THE CORNER LOCATION. SET 3 NEW TIES AND MEASURED TO THE TIES AND WITNESSES.



LOCATION

(INDICATE CORNER BY "X")

SEAL:



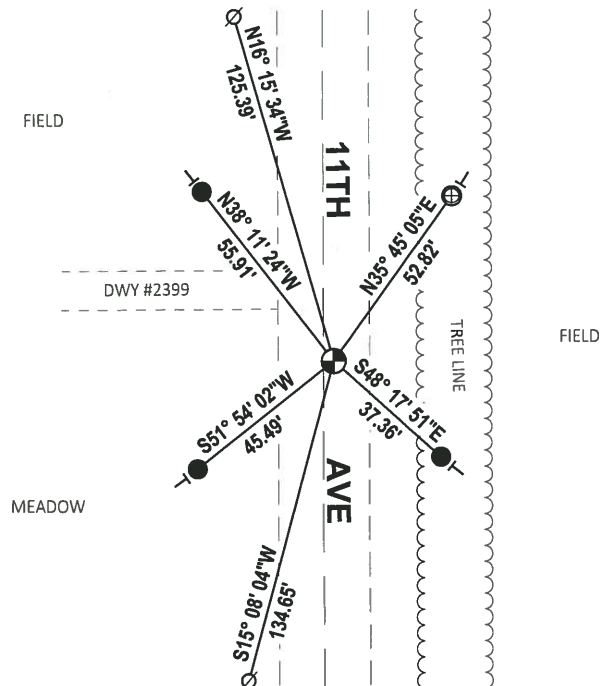
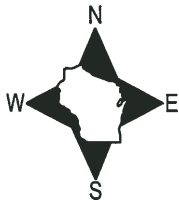
DATA SHOWN HERE ON THIS TIE SHEET IS CORRECT AND COMPLETE TO THE BEST OF MY KNOWLEDGE AND BELIEF.

PROFESSIONAL LAND SURVEYOR

DATE 12/4/2018

- TIE SKETCH

NOTE: THE CORNER FALLS 3± EAST OF THE CENTERLINE OF 11TH AVE.



- SET 3/4" x 18" IRON REBAR, 1.50#/FT
- ⊕ FOUND 1" O.D. IRON PIPE
- ⊙ FOUND HARRISON MONUMENT (BROKEN-TOP)
- ∅ WITNESS POWER POLE
- | VINYL "T" POST

ADAMS COUNTY

Survey Monument Record

CORNER NO. 275

SECTION 29

TOWN 17

RANGE 6

TYPE OF MONUMENT: Harrison std.

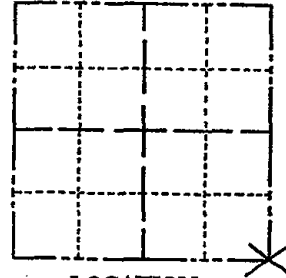
STATE PLANE COORDINATES: N

E

ELEVATION — M.S.L. DATUM:

THETA ANGLE:

FIELD BOOK: 108 PAGE 20



LOCATION (Indicated by 'X')

SEAL:

BASIS FOR MONUMENT LOCATION

(Use reverse side if necessary)

Show info such as: History of corner, with reference to Vol. and pg, dates, surveyor; exact description of monument replaced; if location computed, by taped or EDM traverse; landowner remarks, etc.

Replaced railroad spike found. This matched Power Co. survey of substation. Traverse of entire section appears to verify location.



Everything o.k. 9-27-75 SJS
" " 9-27-75 RMC
ALL OK 7-18-85 DK
ALL OK 2-14-90 KZ-CR
ALL OK 8-3-94 JG-BS
ALL OK, 2-14-00, JG
OK, 1-25-05-JE
" 1-20-10 SS

CERTIFIED CORRECT:

Anthony B. Kiedrowski
Registered Land Surveyor

DATE: 5/9/73

TIE SKETCH

(Show at least four ties)

