

26 SECTION    17 TOWN    06 RANGE

# ADAMS COUNTY

COUNTY CORNER NO: 110  
ROMPORTOL ID: 41706260020

## PUBLIC LAND SURVEY MONUMENT RECORD

TYPE OF MONUMENT: HARRISON

ADAMS COUNTY COORDINATES, NAD 83 (2007)

N. 197726.520

E. 549695.994

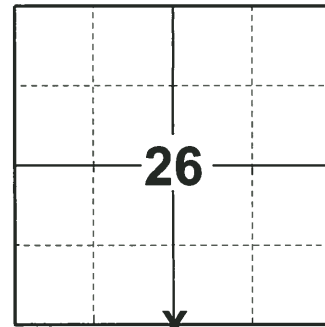
ELEVATION-      DATUM     

FIELD WORK DATE: 09/20/2018

### BASIS FOR MONUMENT LOCATION

1975 - PLS 1103 RAN EDM/TRANSIT TRAVERSE AROUND SECTIONS 34 AND 35 TO DETERMINE SEARCH AREAS. FOUND A 1" IRON PIPE NEAR A 12" DIAMETER STONE WITH A CHISELED CROSS ON TOP. REPLACED THE STONE WITH A STANDARD HARRISON MONUMENT AND TIED OUT.

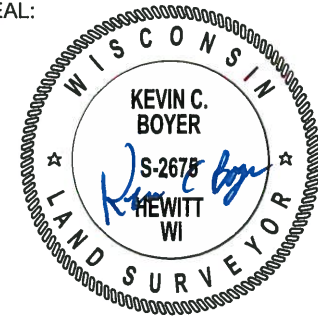
2018 - PLS 2675 FOUND A HARRISON MONUMENT 4" ABOVE THE GROUND SURFACE. FOUND NO EVIDENCE OF ANY OF THE EXISTING TIES OR WITNESSES. ACCEPTED THE HARRISON MONUMENT AS THE BEST EVIDENCE OF THE CORNER LOCATION. SET 4 NEW TIES AND MEASURED TO THE TIES.



**LOCATION**

(INDICATE CORNER BY "X")

SEAL:



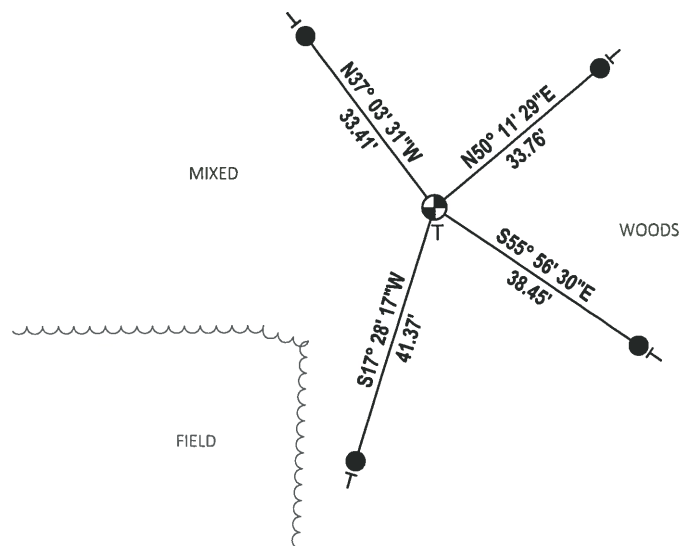
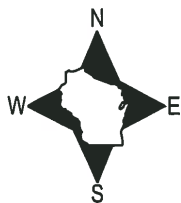
DATA SHOWN HERE ON THIS TIE SHEET IS CORRECT AND COMPLETE TO THE BEST OF MY KNOWLEDGE AND BELIEF.

PROFESSIONAL LAND SURVEYOR

DATE 12/4/2018

### - TIE SKETCH

NOTE: THE CORNER FALLS 29'± NORTHEAST OF THE FIELD EDGE.



- SET 3/4" x 18" IRON REBAR, 1.50#/FT
- ⊕ FOUND HARRISON MONUMENT
- VINYL "T" POST

ADAMS COUNTY

Survey Monument Record

TYPE OF MONUMENT: Standard Harrison

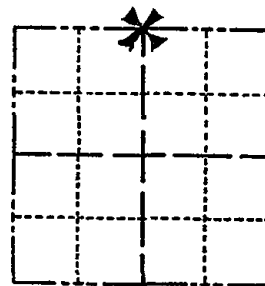
STATE PLANE COORDINATES: N \_\_\_\_\_  
E \_\_\_\_\_

ELEVATION — M.S.L. DATUM: \_\_\_\_\_

THETA ANGLE: \_\_\_\_\_

FIELD BOOK: \_\_\_\_\_ PAGE \_\_\_\_\_

CORNER NO. 696 <sup>(110)</sup>  
SECTION 35  
TOWN 17 N  
RANGE 6 E



LOCATION  
(Indicated by 'X')

SEAL:

BASIS FOR MONUMENT LOCATION

(Use reverse side if necessary)

Show info such as: History of corner, with reference to Vol. and pg, dates, surveyor; exact description of monument replaced; if location computed, by taped or EDM traverse; landowner remarks, etc.

Ran EDM/transit traverse around Sections 34 and 35 to determine search areas.

Found 1" iron pipe near 12" diameter stone with cross chiseled in top.

Replaced stone with Standard Harrison Monument.



OK 3/10/80 RM SS  
OK 9-17-85 GR  
ALL OK 2-14-90 KZ-GR  
1-GONE 4-LEFT 4-17-95 JG-CR  
ADD 1' NEW 2-15-00 SS  
ALL OK, 3-2-05, JG-JS  
1 NEW TIE 11-29-10 SS

CERTIFIED CORRECT:

Dale C. Hagen  
Registered Land Surveyor  
DATE: 1/9/750

TIE SKETCH

(Show at least four ties)

NOTE: Ties in trees to nail in disc.

