

25 SECTION 17 TOWN 06 RANGE

ADAMS COUNTY

COUNTY CORNER NO: 112
 ROMPORTOL ID: 41706250020

PUBLIC LAND SURVEY MONUMENT RECORD

TYPE OF MONUMENT: HARRISON (BROKEN-TOP)

ADAMS COUNTY COORDINATES, NAD 83 (2007)

N. 197796.121

E. 554974.296

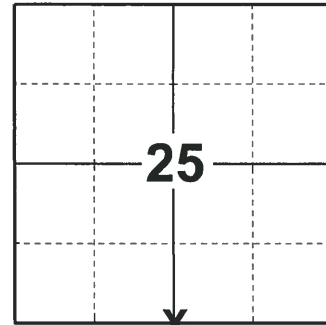
ELEVATION- _____ DATUM _____

FIELD WORK DATE: 09/20/2018

BASIS FOR MONUMENT LOCATION

1979 - PLS 1167 RAN E.D.M. TRAVERSE OF 25-17-6E. CALCULATED THE CORNER LOCATION EQUIDISTANT AND ON LINE BETWEEN ADJACENT SECTION CORNERS. FOUND NO EVIDENCE OF THE ORIGINAL CORNER OR ANY SUBSEQUENT REMONUMENTATION. SET A HARRISON MONUMENT AT THE CALCULATED POSITION AND TIED OUT.

2018 - PLS 2675 FOUND A HARRISON MONUMENT WITH A BROKEN-TOP 8" ABOVE THE GROUND SURFACE AND 2 WITNESS TREES. THE MONUMENT AGREES WITH THE EXISTING WITNESS TREES. ACCEPTED THE HARRISON MONUMENT WITH A BROKEN-TOP AS THE CORNER LOCATION. SET 4 NEW TIES AND MEASURED TO THE TIES AND WITNESS TREES.



LOCATION

(INDICATE CORNER BY "X")

SEAL:

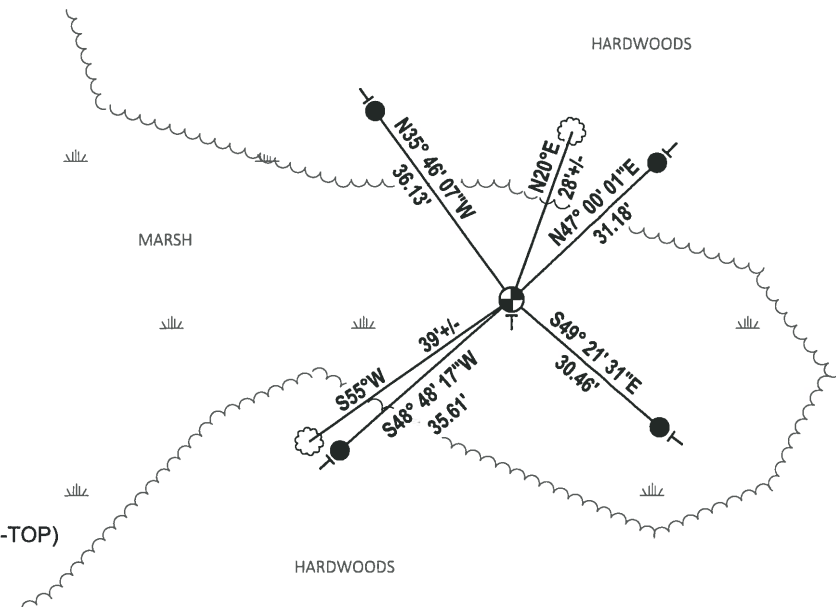
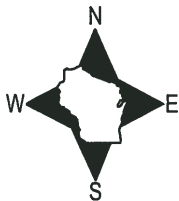


DATA SHOWN HERE ON THIS TIE SHEET IS CORRECT AND COMPLETE TO THE BEST OF MY KNOWLEDGE AND BELIEF.

PROFESSIONAL LAND SURVEYOR

DATE 12/4/2018

- TIE SKETCH

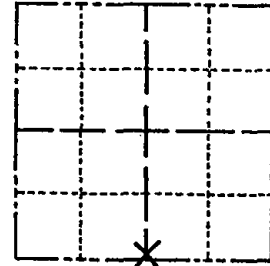


- SET 3/4" x 18" IRON REBAR, 1.50#/FT
- ⊕ FOUND HARRISON MONUMENT (BROKEN-TOP)
- VINYL "T" POST
- ☼ WITNESS TREE

Government Land Corner Certificate

Adams County
 TYPE OF MONUMENT: HARRISON
 STATE PLANE COORDINATES: N _____
 E _____
 ELEVATION — M.S.L. DATUM: _____
 THETA ANGLE: _____
 FIELD BOOK: LL PAGE _____
 DRAWN BY: BASLER

CORNER NO. 112
 SECTION 25
 TOWN 17
 RANGE 6E



LOCATION
(Indicated by 'X')

BASIS FOR MONUMENT LOCATION

Show info such as: History of corner, with reference to Vol. and pg., dates, surveyor; exact description of monument replaced; if location computed, by taped or EDM traverse; landowner remarks, etc. (Use reverse side if necessary)

Ran E.D.M. Traverse 25-17-6E.
 Set Corner equidistant and on line between adjacent Section Corners.
 No evidence could be found as to location of Original Corner or any subsequent remonumentation thereof.

ALL OK 1990 NZ-GR

1- NEW TIE, TOP BROKEN OFF MON. 12-07-00 - JG
 TIES OK, 3-28-5 SJS
 1 NEW TIE 11-29-10 SS

SEAL:



DATA SHOWN HERE ON CERTIFIED CORRECT:

Wayne Basler
 Registered Land Surveyor

DATE: 12-27-79

TIE SKETCH

Show at least four ties, also fence lines, roads, topo, size and type of witness trees and if off road - best way to arrive at corner.

