

31 SECTION 17 TOWN 06 RANGE

# ADAMS COUNTY

COUNTY CORNER NO: 122  
ROMPORTOL ID: 41706310020

## PUBLIC LAND SURVEY MONUMENT RECORD

TYPE OF MONUMENT: HARRISON  
ADAMS COUNTY COORDINATES, NAD 83 (2007)

N. 192355.844

E. 528607.918

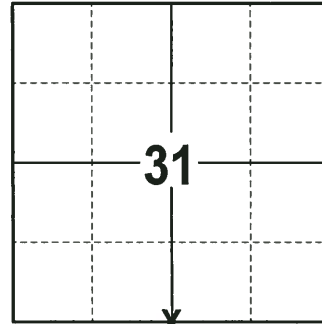
ELEVATION- --- DATUM ---

FIELD WORK DATE: 11/30/2017

### BASIS FOR MONUMENT LOCATION

1978 - PLS 1267 TRAVERSED SECTION 31-32-33 OF T17N-R6E BY E.D.M. AND T-2. COMPUTED S1/4 OF SECTION 31 BY SINGLE PROPORTION AND PRORATION FROM THE S1/4 OF SECTION 32 AND THE SW CORNER OF 31 ESTABLISHED. FOUND NO EVIDENCE OF THE ORIGINAL CORNER, MOUND OR ORIGINAL BEARING TREE'S FROM 1850 RUNNING NOTES. M.C. SMITH PER VOL/ 3, PAGE 67 OF THE ADAMS COUNTY SURVEY RECORDS SEPT. 3, 1903 MAKES REFERENCE TO THE CORNER FOUND, BUT DID NOT SET NEW BEARING TREES. AREA HAS BEEN CUT OVER AND A DITCH LINE DUG IN THE AREA WHICH DOES NOT CONFORM TO ANY DIRECTION OR BEARING. SET A HARRISON MONUMENT AT THE CALCULATED LOCATION AND TIED OUT.

2017 - PLS 2994 FOUND A HARRISON MONUMENT 6" ABOVE THE GROUND SURFACE AND 1 TIE. MONUMENT AGREES WITH THE EXISTING TIE. ACCEPTED THE HARRISON MONUMENT AS THE CORNER LOCATION. SET 3 NEW TIES AND MEASURED TO THE TIES.



**LOCATION**  
(INDICATE CORNER BY "X")

SEAL:

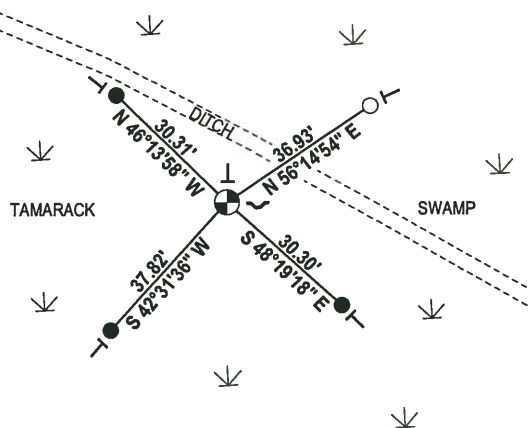
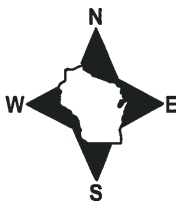


DATA SHOWN HERE ON THIS TIE SHEET IS CORRECT AND COMPLETE TO THE BEST OF MY KNOWLEDGE AND BELIEF.

PROFESSIONAL LAND SURVEYOR

DATE 12-21-17

### - TIE SKETCH -

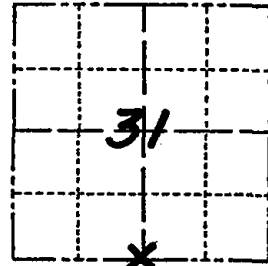


- 3/4" x 18" IRON REBAR SET, 1.50#/FT
- 1/2" IRON ROD FOUND
- ⊕ HARRISON FOUND
- ↙ STEEL FENCE POST (WILDLIFE REFUGE)
- ↔ VINYL "T" POST

# Government Land Corner Certificate

ADAMS County  
 TYPE OF MONUMENT: HARRISON  
 STATE PLANE COORDINATES: N \_\_\_\_\_  
 E \_\_\_\_\_  
 ELEVATION — M.S.L. DATUM: \_\_\_\_\_  
 THETA ANGLE: \_\_\_\_\_  
 FIELD BOOK: 563 PAGE 58-68  
 DRAWN BY: \_\_\_\_\_

CORNER NO. 122  
 SECTION 31  
 TOWN 17N  
 RANGE 6E



LOCATION  
(Indicated by 'X')

## BASIS FOR MONUMENT LOCATION

Show info such as: History of corner, with reference to Vol. and pg., dates, surveyor; exact description of monument replaced; if location computed, by taped or EDM traverse; landowner remarks, etc. (Use reverse side if necessary)

S $\frac{1}{4}$  Section 31-T17N-R6E Adams

Traversed Section 31-32-33 of T17N-R6E by EDM and T-2, computed S $\frac{1}{4}$  of Section 31 by single proportion and proration from S $\frac{1}{4}$  of Section 32 found SW Corner of 31 established. Found no evidence of original corner or mound or original BT's from 1850 running notes. MC Smith per Vol. 3, page 67 of Adams County Survey Records Sept. 3, 1903 makes reference to corner found but set no new Bt's at corner. Area has been cut over and a ditch line dug in the area which does not conform to any direction or bearing.

SEAL:



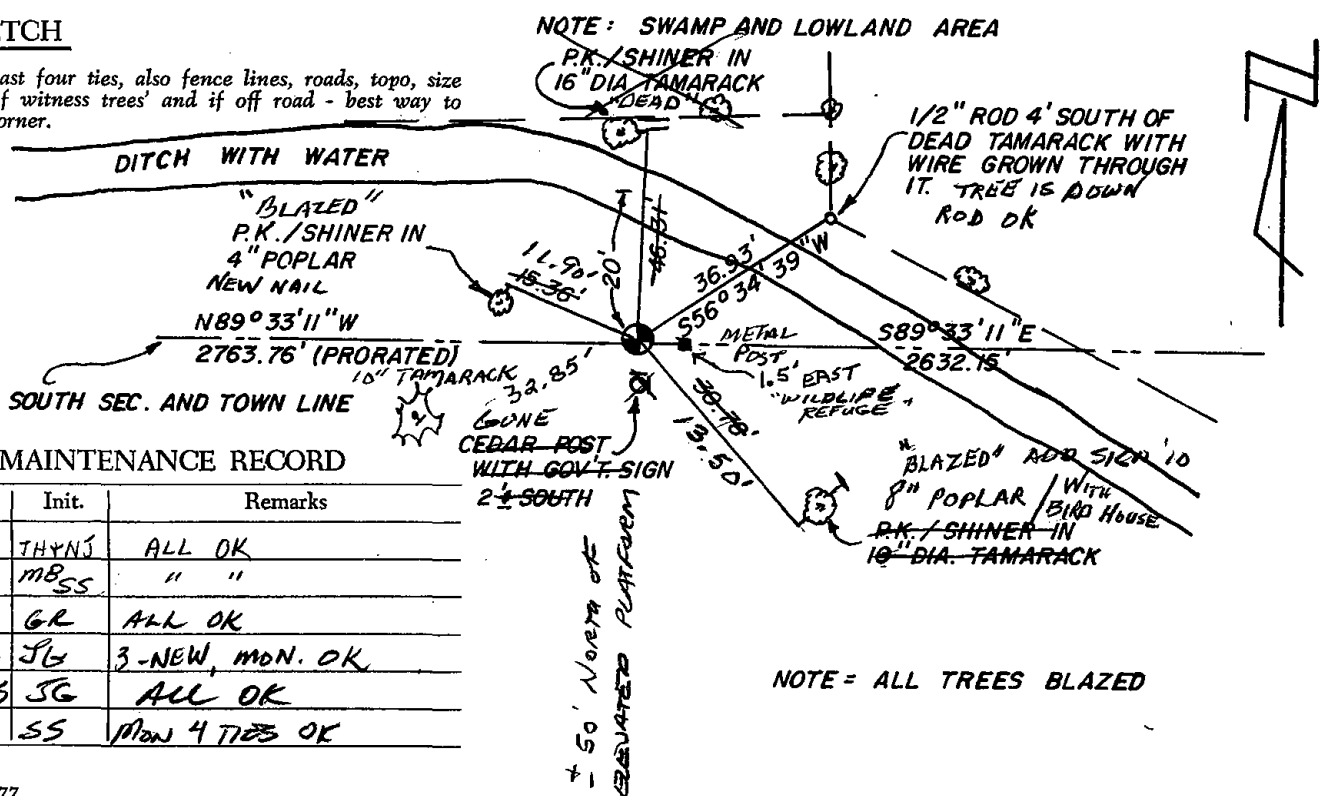
DATA SHOWN HERE ON CERTIFIED CORRECT:

*Ken Schuette*  
 Registered Land Surveyor

DATE: 21 Dec 1978

## TIE SKETCH

Show at least four ties, also fence lines, roads, topo, size and type of witness trees and if off road - best way to arrive at corner.



## MAINTENANCE RECORD

Date	Init.	Remarks
1-7-81	THYNS	ALL OK
10-28-85	MBSS	" "
1990	GR	ALL OK
4-4-00	JG	3-NEW, MON. OK
4-8-05	JG	ALL OK
1-26-10	SS	Plow 4 TIES OK

NOTE = ALL TREES BLAZED