

PUBLIC LAND SURVEY MONUMENT RECORD

TYPE OF MONUMENT: HARRISON
 ADAMS COUNTY COORDINATES, NAD 83 (2007)

N. 192360.184

E. 533872.238

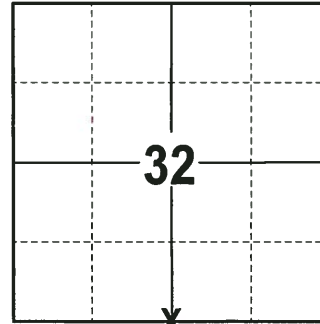
ELEVATION- DATUM

FIELD WORK DATE: 11/29/2017

BASIS FOR MONUMENT LOCATION

1978 - PLS 1267 FOUND A MOUND AND STAKE FROM THE ORIGINAL RUNNING NOTES FROM 1850, ALSO FOUND A BEARING TREE MOUND OF A 8" BLACK OAK. TRAVERSED SECTION 31-32-33, T17N-R6E BY E.D.M. AND T-2 TO VERIFY THE CORNER. SET A HARRISON MONUMENT AT THE CORNER LOCATION AND TIED OUT.

2017 - PLS 2994 FOUND HARRISON MONUMENT 6" ABOVE THE GROUND SURFACE AND IN THE CENTER OF A 24" TALL AND 36" DIAMETER MOUND AS DESCRIBED IN PAST HISTORY AND 1 WITNESS TREE. THE MONUMENT AGREES WITH THE EXISTING WITNESS TREE. ACCEPTED THE HARRISON MONUMENT AS THE CORNER LOCATION. SET 4 NEW TIES AND MEASURED TO THE TIES AND WITNESS TREE.



LOCATION
 (INDICATE CORNER BY "X")

SEAL:

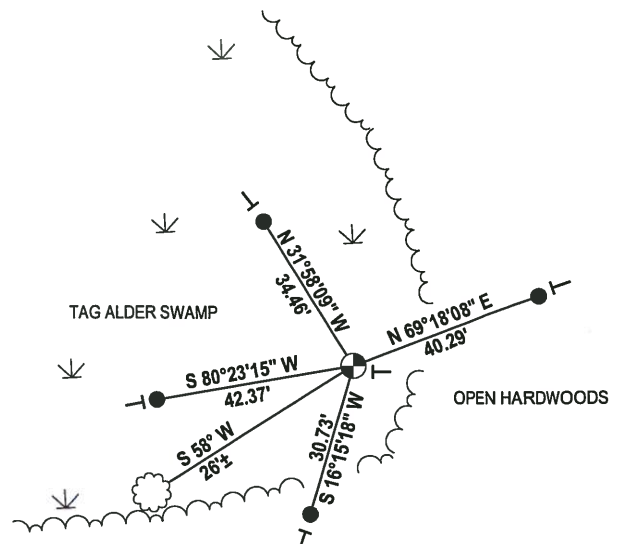
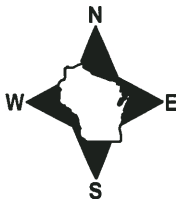


DATA SHOWN HERE ON THIS TIE SHEET IS CORRECT AND COMPLETE TO THE BEST OF MY KNOWLEDGE AND BELIEF.

PROFESSIONAL LAND SURVEYOR

DATE 12-21-17

- TIE SKETCH -

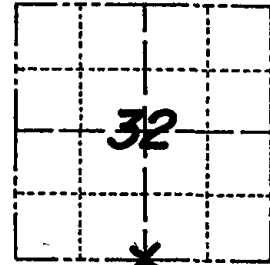


- 3/4" x 48" IRON REBAR SET, 1.50#/FT
- ⊕ HARRISON FOUND
- VINYL "T" POST
- ☁ WITNESS TREE FOUND

Government Land Corner Certificate

ADAMS County
 TYPE OF MONUMENT: HARRISON
 STATE PLANE COORDINATES: N _____
 E _____
 ELEVATION — M.S.L. DATUM: _____
 THETA ANGLE: _____
 FIELD BOOK: 563 PAGE 58-68
 DRAWN BY: _____

CORNER NO. 124
 SECTION 32
 TOWN 17N
 RANGE 6E



LOCATION
 (Indicated by 'X')

SEAL:



DATA SHOWN HERE ON
 CERTIFIED CORRECT:

Ken Schuette
 Registered Land Surveyor

DATE: 21 Dec 1978

BASIS FOR MONUMENT LOCATION

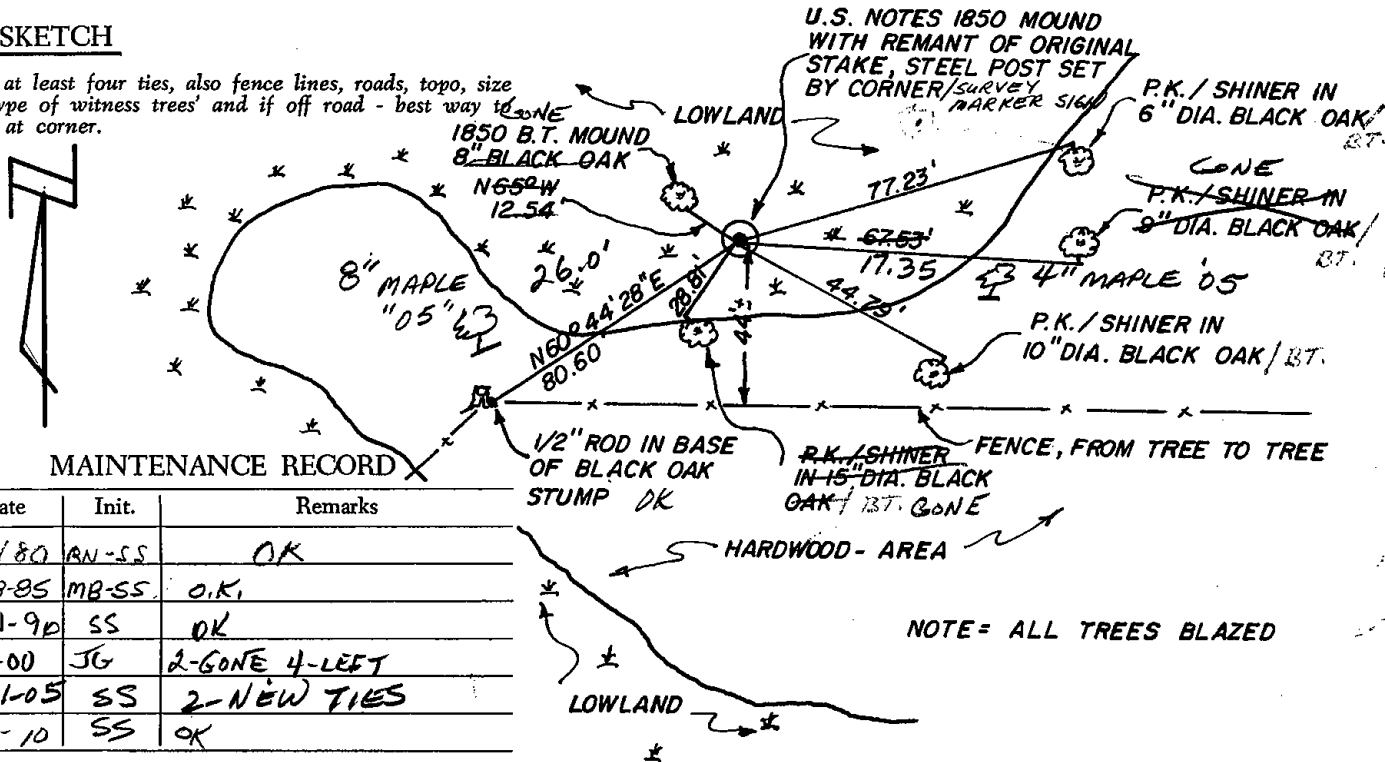
Show info such as: History of corner, with reference to Vol. and pg., dates, surveyor; exact description of monument replaced; if location computed, by taped or EDM traverse; landowner remarks, etc. (Use reverse side if necessary)

Found mound and stake from original Running notes 1850, also Bt mound of 8" Black Oak-traversed Section 31-32-33, T17N-R6E by EDM and T-2 to verify corner.
 See section composites.

OK - ENTER BRIDGEWAY OF HIGHWAY WEST TO HOUSE - NORTH TO CORNER - WALK ACROSS MARSH + PICK UP FENCE - OR THRU PINE PLANTATION NORTH - PROBABLY BEST WAY

TIE SKETCH

Show at least four ties, also fence lines, roads, topo, size and type of witness trees' and if off road - best way to arrive at corner.



MAINTENANCE RECORD

Date	Init.	Remarks
2/12/80	AN-SS	OK
10-29-85	MB-SS	O.K.
1-11-90	SS	OK
4-4-00	JG	2-GONE 4-LEFT
3-31-05	SS	2-NEW TIES
2-10-10	SS	OK

NOTE = ALL TREES BLAZED