

PUBLIC LAND SURVEY MONUMENT RECORD

TYPE OF MONUMENT: HARRISON (BROKEN TOP)
ADAMS COUNTY COORDINATES, NAD 83 (2007)

N. 192364.766

E. 539147.510

ELEVATION- DATUM

FIELD WORK DATE: 11/27/2017

BASIS FOR MONUMENT LOCATION

1978 - PLS 1267 FOUND NO EVIDENCE OF BEARING TREES OR THE CORNER. TRAVERSED THE SECTION BY E.D.M. AND T-2 AND COMPUTED THE LOCATION BY SINGLE/PROPORTION FROM THE S1/4 OF SECTION 32 TO THE SE CORNER OF SECTION 33. SET A HARRISON MONUMENT AT THE CALCULATED LOCATION AND TIED OUT.

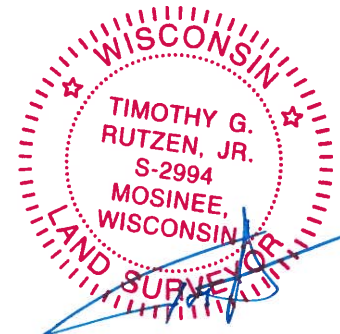
1981 - PLS 1478 SET A NEW HARRISON MONUMENT EQUIDISTANT AND ONLINE BETWEEN ADJOINING SECTION CORNERS. EXCAVATION AT THIS LOCATION YIELDED NO EVIDENCE OF ANY PREVIOUS MONUMENTATION. THIS LOCATION BEST FITS ALL THE COLLATERAL EVIDENCE IN THE ADJOINING SECTIONS. NOTE, THE NEW CORNER LOCATION IS APPROXIMATELY 28.52' SOUTHWEST OF PRIOR 1978 LOCATION ESTABLISHED BY PLS 1267.

2017 - PLS 2994 FOUND HARRISON MONUMENT SET BY PLS 1479, 3" BELOW THE ROAD SURFACE AND 1 TIE. THE MONUMENT AGREES WITH THE EXISTING TIE. ACCEPTED THE HARRISON MONUMENT AS THE CURRENTLY HELD CORNER LOCATION. SET 4 NEW TIES AND MEASURED TO THE TIES AND WITNESS.



LOCATION
(INDICATE CORNER BY "X")

SEAL:



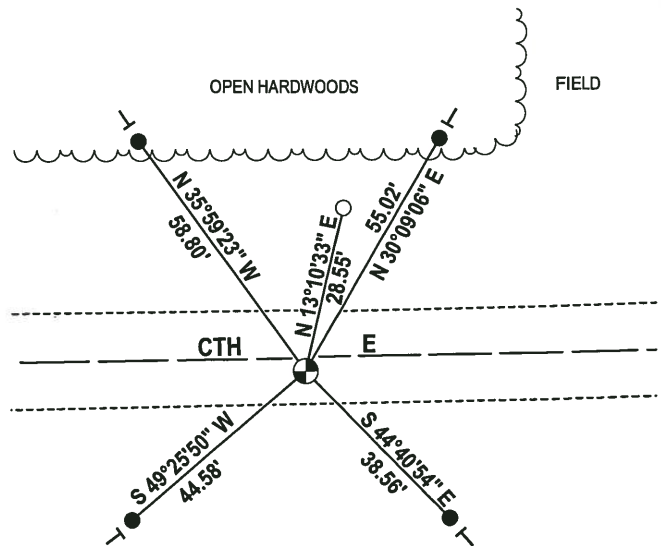
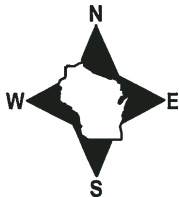
DATA SHOWN HERE ON THIS TIE SHEET IS CORRECT AND COMPLETE TO THE BEST OF MY KNOWLEDGE AND BELIEF.

PROFESSIONAL LAND SURVEYOR

DATE 12-21-17

- TIE SKETCH

NOTE: THE CORNER FALLS 3.5± SOUTH OF THE CENTERLINE OF CTH E.



- 3/4" x 18" IRON REBAR SET, 1.50#/FT
- 3/4" IRON ROD FOUND (PREVIOUS CORNER LOCATION)
- ⊕ HARRISON FOUND
- ⊖ VINYL "T" POST

FIELD

Government Land Corner Certificate

ADAMS County

TYPE OF MONUMENT: HARRISON STANDARD

STATE PLANE COORDINATES: N _____
E _____

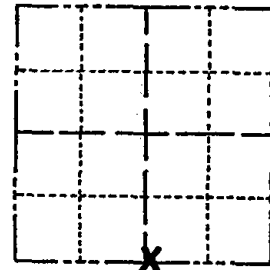
ELEVATION — M.S.L. DATUM: _____

THETA ANGLE: _____

FIELD BOOK: _____ PAGE _____

DRAWN BY: S. S.

CORNER NO. 126
SECTION 33
TOWN 17
RANGE 6



LOCATION
(Indicated by 'X')

BASIS FOR MONUMENT LOCATION

Show info such as: History of corner, with reference to Vol. and pg., dates, surveyor; exact description of monument replaced; if location computed, by taped or EDM traverse; landowner remarks, etc. (Use reverse side if necessary)

Set monument equidistant and on line between adjoining section corners. Excavation at this location yielded no evidence of any previous monumentation. This location fits collateral evidence within the adjacent sections well.

SEAL:



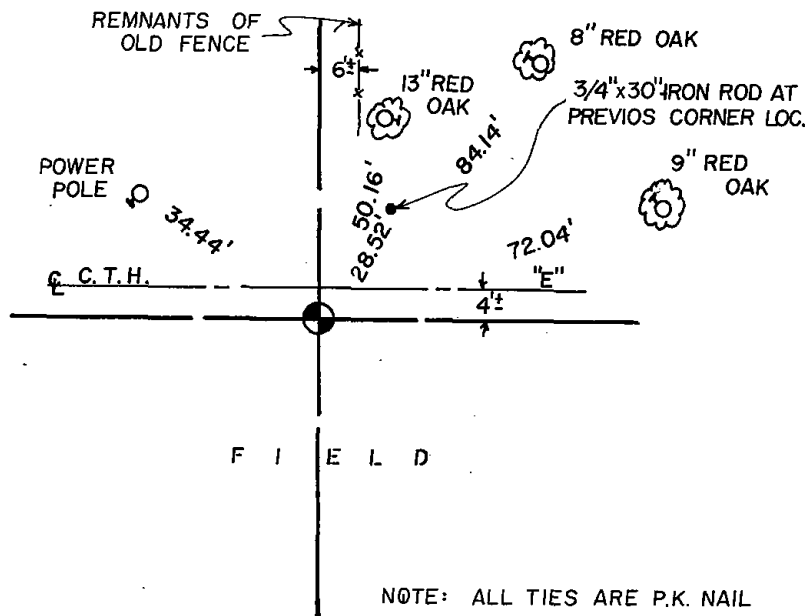
DATA SHOWN HERE ON
CERTIFIED CORRECT:

Gregory P. Rhinehart
Registered Land Surveyor

DATE: June 1, 1981

TIE SKETCH

Show at least four ties, also fence lines, roads, topo, size and type of witness trees' and if off road - best way to arrive at corner.

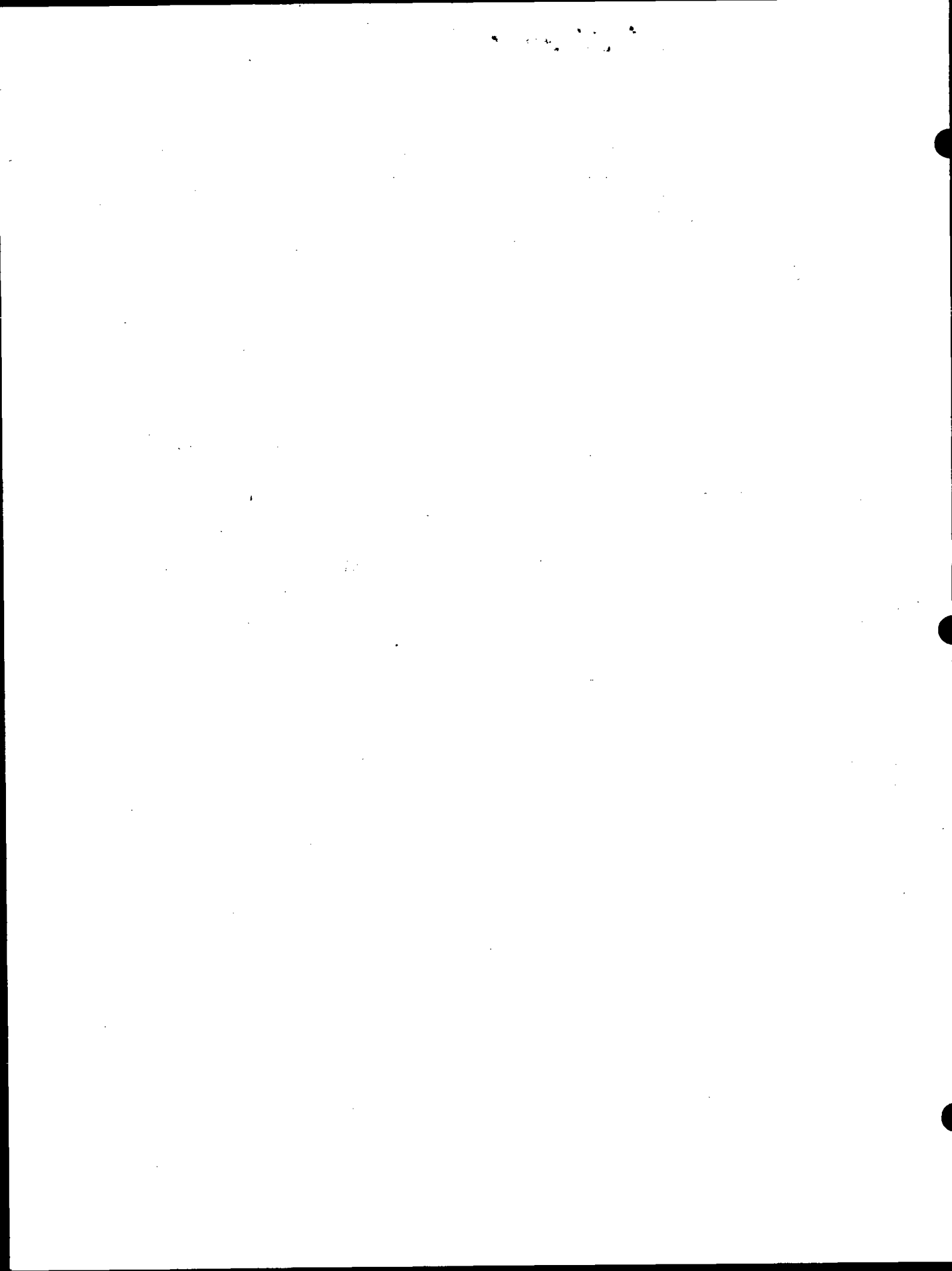


F I E L D

NOTE: ALL TIES ARE P.K. NAIL AND SHINER. TREES BLAZED

MAINTENANCE RECORD

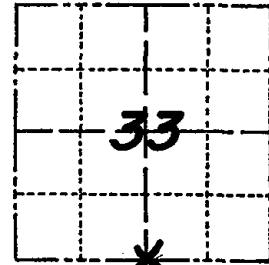
Date	Init.	Remarks
9-25-85	SS MB	All OK
1-11-90	SS	OK
8-3-94	JG BS	OK
2-14-00	JG	OK
1-28-05	JG	OK



Government Land Corner Certificate

ADAMS County
 TYPE OF MONUMENT: HARRISON
 STATE PLANE COORDINATES: N _____
 E _____
 ELEVATION — M.S.L. DATUM: _____
 THETA ANGLE: _____
 FIELD BOOK: 563 PAGE 58-68
 DRAWN BY: _____

CORNER NO. 126
 SECTION 33
 TOWN 17 N
 RANGE 6 E



LOCATION
(Indicated by 'X')

BASIS FOR MONUMENT LOCATION

Show info such as: History of corner, with reference to Vol. and pg., dates, surveyor; exact description of monument replaced; if location computed, by taped or EDM traverse; landowner remarks, etc. (Use reverse side if necessary)

No history of surveys in area since original in 1850, found no evidence of BT's. Traversed Section 31-32-&33. by EDM and T-2 to set corners by single proportion from SE corner of Section 33 and $S\frac{1}{4}$ Section 32 where we found original mound and remains of stake and BT from U.S. Notes, 1850. South $\frac{1}{4}$ corner computed and set on line.

See how to be dug
See New tie sheet!

SEAL:



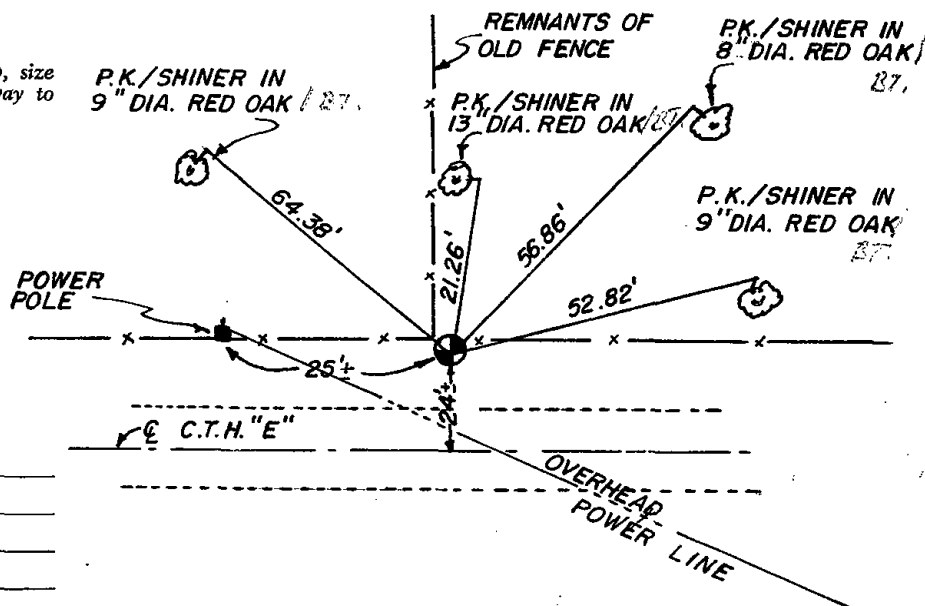
DATA SHOWN HERE ON
CERTIFIED CORRECT:

Ken Schuette
 Registered Land Surveyor

DATE: 21 Dec 1978

TIE SKETCH

Show at least four ties, also fence lines, roads, topo, size and type of witness trees' and if off road - best way to arrive at corner.



MAINTENANCE RECORD

Date	Init.	Remarks
3/10/80	RAN-SI	OK

NOTE = ALL TREES BLAZED

