

31
SECTION

18
TOWN

07
RANGE

ADAMS COUNTY

COUNTY CORNER NO: 123

ROMPORTOL ID: 41807310000

PUBLIC LAND SURVEY MONUMENT RECORD

TYPE OF MONUMENT: 1-1/2" O.D. IRON PIPE
ADAMS COUNTY COORDINATES, NAD 83 (2007)

N. 224422.659

E. 562408.245

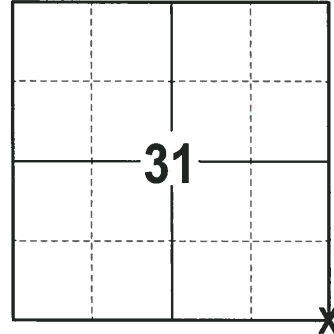
ELEVATION- DATUM

FIELD WORK DATE: 01/09/2018

BASIS FOR MONUMENT LOCATION

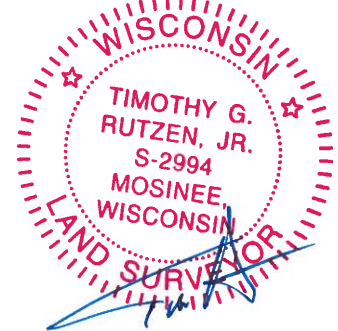
1980 - PLS 878 FOUND NO EVIDENCE OF THE CORNER MONUMENT OR ITS BEARING TREES CALLED FOR BY BARRETT IN 1897 PER VOL. 2 PG. 191. CALCULATED THE CORNER LOCATION BY ANALYZING AN EDM TRAVERSE OF SECTION 5,6,7 AND 8, TAKING INTO ACCOUNT, POSSESSION, CORNERS FOUND, AND COMPARING WITH THE ORIGINAL NOTES. SET 1-1/4" x 30" IRON PIPE AND TIED OUT.

2017 - PLS 2994 FOUND A 1-1/2" O.D. IRON PIPE 6" ABOVE THE GROUND SURFACE AND 1 WITNESS TREE STUMP. THE MONUMENT AGREES WITH THE EXISTING WITNESS TREE STUMP. ACCEPTED THE 1-1/2" O.D. IRON PIPE AS THE CORNER LOCATION. SET 4 NEW TIES AND MEASURED TO THE TIES AND WITNESS TREE STUMP.



LOCATION
(INDICATE CORNER BY "X")

SEAL:



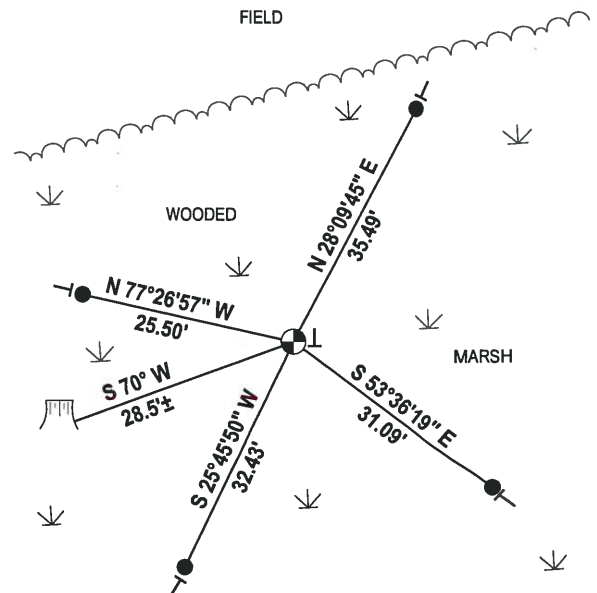
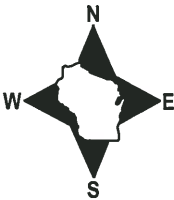
DATA SHOWN HERE ON THIS TIE SHEET IS CORRECT AND COMPLETE TO THE BEST OF MY KNOWLEDGE AND BELIEF.

PROFESSIONAL LAND SURVEYOR

DATE 2-2-18

- TIE SKETCH

NOTE: THE CORNER FALLS 47± SOUTH OF THE FIELDS EDGE AND 225± SOUTH OF THE CENTERLINE OF CTH J.

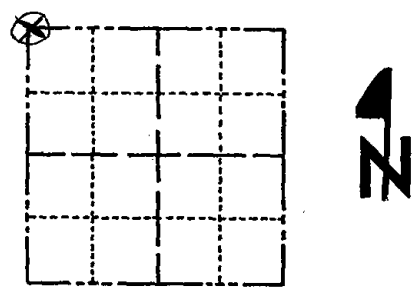


- 3/4" x 18" IRON REBAR SET, 1.50#/FT
- ⊙ 1-1/2" O.D. IRON PIPE FOUND
- VINYL "T" POST
- ▭ WITNESS TREE STUMP FOUND

Government Land Corner Certificate

ADAMS County
 TYPE OF MONUMENT: 1 1/2" x 3/4" Iron Pipe
 STATE PLANE COORDINATES: N _____
 E _____
 ELEVATION — M.S.L. DATUM: _____
 THETA ANGLE: _____
 FIELD BOOK: 83 PAGE 106
 DRAWN BY: PAUL KIEDROWSKI

CORNER NO. 3
 SECTION 5
 TOWN 17
 RANGE 7



LOCATION
(Indicated by 'X')

BASIS FOR MONUMENT LOCATION

Show info such as: History of corner, with reference to Vol. and pg., dates, surveyor; exact description of monument replaced; if location computed, by taped or EDM traverse; landowner remarks, etc. (Use reverse side if necessary)

Could not find evidence of corner monument or bearing trees called for by Barrett in 1897 per 2/191. Corner set by analyzing an EDM traverse of section 5,6,7,8, taking into account, possession, corners found, and comparing with original notes.

SEAL:



DATA SHOWN HERE ON
CERTIFIED CORRECT:

Anthony B. Kiedrowski
Registered Land Surveyor

DATE: 6/9/80

TIE SKETCH

Show at least four ties, also fence lines, roads, topo, size and type of 'witness trees' and if off road - best way to arrive at corner.

