

36 SECTION    18 TOWN    07 RANGE

# ADAMS COUNTY

COUNTY CORNER NO: 132

ROMPORTOL ID: 41807360020

## PUBLIC LAND SURVEY MONUMENT RECORD

TYPE OF MONUMENT: HARRISON  
 ADAMS COUNTY COORDINATES, NAD 83 (2007)

N. 224592.773

E. 586197.192

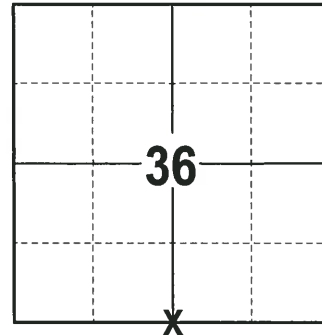
ELEVATION-      DATUM     

FIELD WORK DATE: 01/10/2018

### BASIS FOR MONUMENT LOCATION

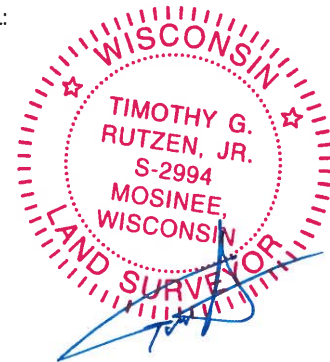
1974 - PLS 878 REPLACED THE 1" IRON PIPE SET FOR THE BREISE SURVEY WITH A HARRISON MONUMENT. TRAVERSED THE ENTIRE SECTION TO VERIFY THE LOCATION AND TIED OUT.

2017 - PLS 2994 FOUND A HARRISON MONUMENT 2" BELOW THE ROAD SURFACE. FOUND NO EVIDENCE OF ANY TIES OR WITNESSES. ACCEPTED THE HARRISON MONUMENT AS THE BEST EVIDENCE OF THE CORNER LOCATION. SET 4 NEW TIES AND MEASURED TO THE TIES.



**LOCATION**  
(INDICATE CORNER BY "X")

SEAL:

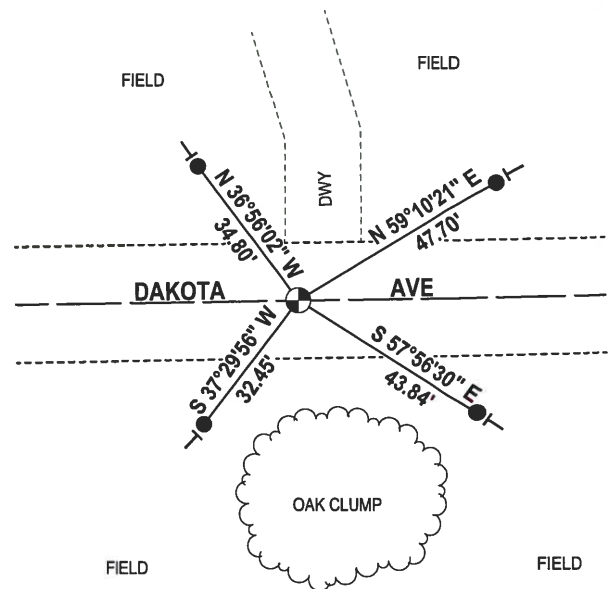
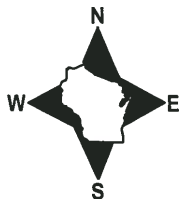


DATA SHOWN HERE ON THIS TIE SHEET IS CORRECT AND COMPLETE TO THE BEST OF MY KNOWLEDGE AND BELIEF.

PROFESSIONAL LAND SURVEYOR

DATE 2-2-18

### - TIE SKETCH



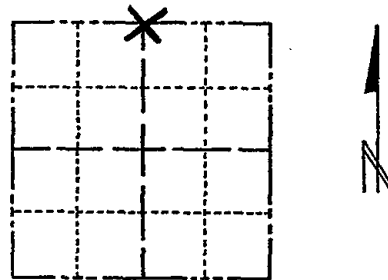
- 3/4" x 18" IRON REBAR SET, 1.50#/FT
- ⊕ HARRISON FOUND
- VINYL "T" POST

# ADAMS COUNTY

## Survey Monument Record

TYPE OF MONUMENT: Harrison standard  
 STATE PLANE COORDINATES: N \_\_\_\_\_  
 E \_\_\_\_\_  
 ELEVATION — M.S.L. DATUM: \_\_\_\_\_  
 THETA ANGLE: \_\_\_\_\_  
 FIELD BOOK: \_\_\_\_\_ PAGE \_\_\_\_\_

CORNER NO. 392 (12)  
 SECTION 1  
 TOWN 17  
 RANGE 7



LOCATION  
(Indicated by 'X')

### BASIS FOR MONUMENT LOCATION

(Use reverse side if necessary)

Show info such as: History of corner, with reference to Vol. and pg, dates, surveyor; exact description of monument replaced; if location computed, by taped or EDM traverse; landowner remarks, etc.

Replaced 1" iron pipe set by me for the Breise survey. Entire section traversed and location verified.

SEAL:



CORNER O.K. 3-28-77 GR-SS  
 CORNER OK 3-25-82 GR-SS  
 " " 1-23-87 JL-SS  
 1-NEW, 1-GONE 1-3-92 GR-JG  
 CORNER OK 1-22-97 JG-SS  
 OK 1-14-02 JG

CERTIFIED CORRECT:

*Anthony B. Kiedrowski*  
 Registered Land Surveyor  
 DATE: 6/3/74

### TIE SKETCH OK 01-26-12 MS NEW NAILS IN 3 BEARING TREES

(Show at least four ties)

