

04
SECTION

17
TOWN

07
RANGE

ADAMS COUNTY

COUNTY CORNER NO.: 27

ROMPORTOL ID: 41707040000

PUBLIC LAND SURVEY MONUMENT RECORD

TYPE OF MONUMENT: HARRISON
ADAMS COUNTY COORDINATES, NAD 83 (2007)

N. 218947.274

E. 573042.762

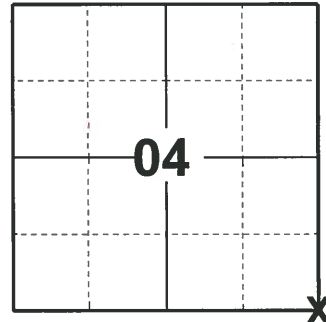
ELEVATION- _____ DATUM _____

FIELD WORK DATE: 03/25/2019

BASIS FOR MONUMENT LOCATION

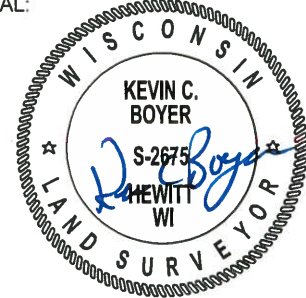
1974 - PLS 1103 EXCAVATION WITH BACK-HOE YIELDED NO EVIDENCE AS TO THE LOCATION OF THE ORIGINAL CORNER. RAND EDM/TRANSIT TRAVERSE OF SECTION 9 AND FIELD EVIDENCE IN ADJACENT SECTIONS. USING THIS DATA AND THE ORIGINAL AND RE-SURVEY NOTES, THE NORTHEAST CORNER OF SECTION 9 WAS MONUMENTED.

2019 - PLS 2675 FOUND HARRISON MONUMENT 2" BELOW THE ROAD SURFACE AND 1 WITNESS. THE MONUMENT AGREES WITH THE WITNESS. ACCEPTED THE HARRISON MONUMENT AS THE CORNER LOCATION. SET 4 NEW TIES AND MEASURED TO THE EXISTING WITNESS.



LOCATION
(INDICATE CORNER BY "X")

SEAL:



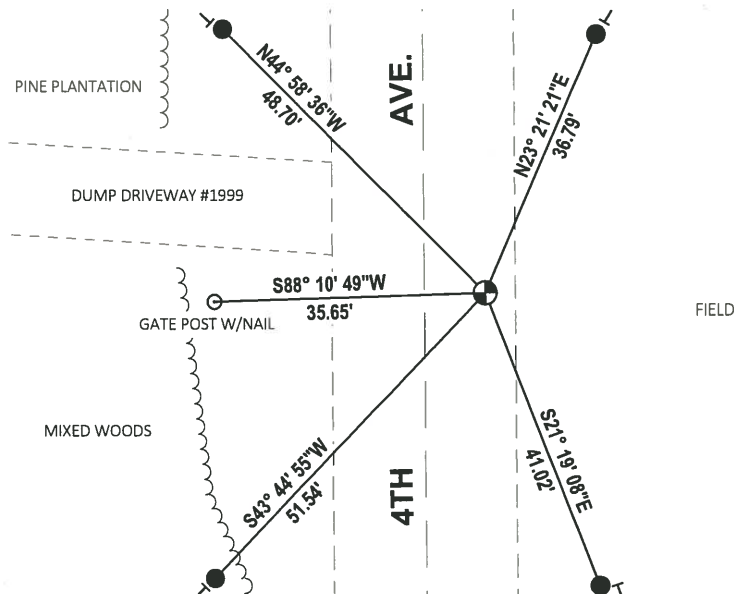
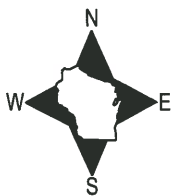
DATA SHOWN HERE ON THIS TIE SHEET IS CORRECT AND COMPLETE TO THE BEST OF MY KNOWLEDGE AND BELIEF.

PROFESSIONAL LAND SURVEYOR

DATE 5/1/19

TIE SKETCH

NOTE: THE CORNER FALLS 8± EAST OF 4TH AVE CENTERLINE.



- SET 3/4" x 18" IRON REBAR, 1.50#/FT
- ⊕ FOUND HARRISON MONUMENT
- VINYL "T" POST

ADAMS COUNTY

Survey Monument Record

TYPE OF MONUMENT: Harrison Standard

STATE PLANE COORDINATES: N _____

E _____

ELEVATION — M.S.L. DATUM: _____

THETA ANGLE: _____

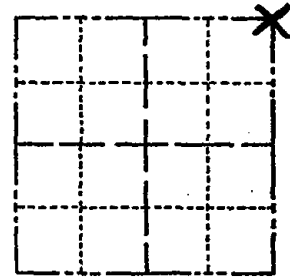
FIELD BOOK: _____ PAGE _____

CORNER NO. 458

SECTION 9

TOWN 17

RANGE 7



LOCATION
(Indicated by 'X')

SEAL:



CERTIFIED CORRECT:

Dale C. Hagen
Registered Land Surveyor

DATE: June 28, 1974

BASIS FOR MONUMENT LOCATION

(Use reverse side if necessary)

Show info such as: History of corner, with reference to Vol. and pg. dates, surveyor; exact description of monument replaced; if location computed, by taped or EDM traverse; landowner remarks, etc.

Excavation with back-hoe yielded no evidence as to the location of the original corner.

Ran EDM/transit traverse of Section 9 and field evidence in adjacent sections. Using this data and the original and re-survey notes, the Northeast corner of Section 9 was monumented.

CORNER	O.K.	3-14-77	GR-SS
"	"	5-26-82	PK-SS
"	"	1-23-87	JL-SS
"	"	1-3-92	GR-JG
"	"	1-22-97	JG-SS

TIE SKETCH

(Show at least four ties)
NEW TIE 1-27-12 MS
OK, 9-12-07-JG

