

03
SECTION

17
TOWN

07
RANGE

ADAMS COUNTY

COUNTY CORNER NO: 29

ROMPORTOL ID: 41707030000

PUBLIC LAND SURVEY MONUMENT RECORD

TYPE OF MONUMENT: HARRISON
ADAMS COUNTY COORDINATES, NAD 83 (2007)

N. 218951.541

E. 578331.397

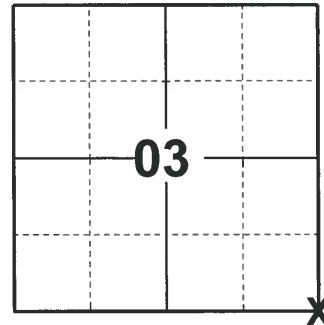
ELEVATION- DATUM

FIELD WORK DATE: 03/25/2019

BASIS FOR MONUMENT LOCATION

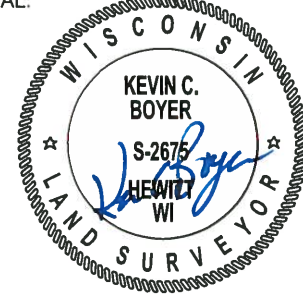
1980 - PLS 584 NO RECORD OF RESURVEY. NO EVIDENCE OF MONUMENT FOUND. CORNER SET BY RUNNING EDM TRAVERSE ONE MILE NORTH, EAST, WEST, AND SOUTH OF HERE, COMPARING POSSESSION LINES WITH ORIGINAL NOTES.

2019 - PLS 2675 FOUND HARRISON MONUMENT FLUSH WITH THE GROUND AND DID NOT RECOVER ANY TIE OR WITNESSES. ACCEPTED THE HARRISON AS THE CORNER LOCATION AND SET 4 NEW TIES.



LOCATION
(INDICATE CORNER BY "X")

SEAL:

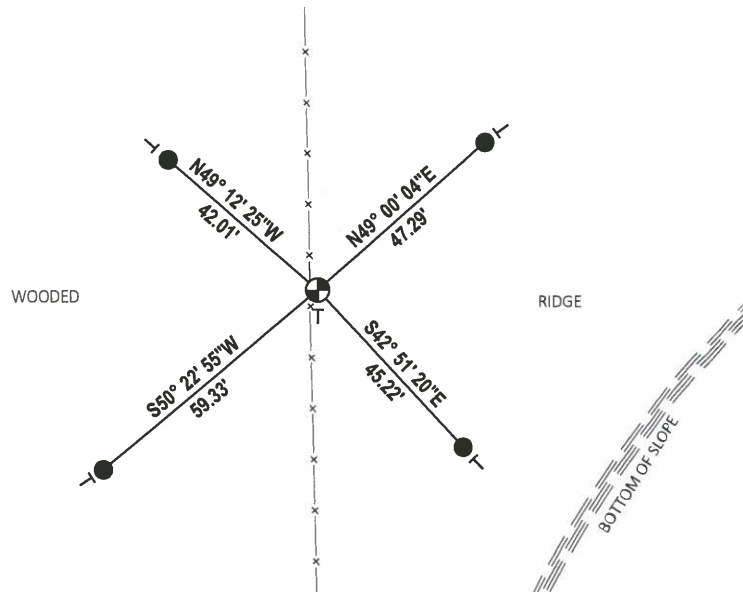


DATA SHOWN HERE ON THIS TIE SHEET IS CORRECT AND COMPLETE TO THE BEST OF MY KNOWLEDGE AND BELIEF.

PROFESSIONAL LAND SURVEYOR

DATE 5/1/19

TIE SKETCH

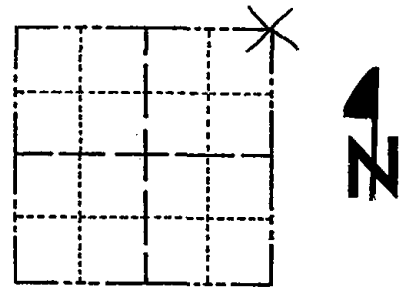


- SET 3/4" x 18" IRON REBAR, 1.50#/FT
- ⊕ FOUND HARRISON MONUMENT
- VINYL "T" POST

Government Land Corner Certificate

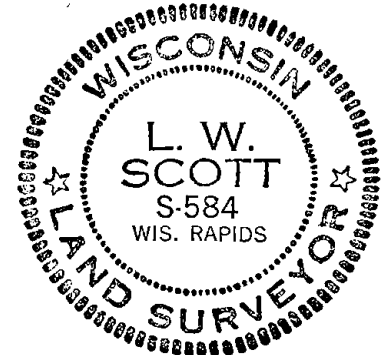
ADAMS County
 TYPE OF MONUMENT: HARRISON
 STATE PLANE COORDINATES: N _____
 E _____
 ELEVATION — M.S.L. DATUM: _____
 THETA ANGLE: _____
 FIELD BOOK: 87 PAGE 128
 DRAWN BY: S. Haumschild

CORNER NO. 29
 SECTION 10
 TOWN 17
 RANGE 7



LOCATION
(Indicated by 'X')

SEAL:



DATA SHOWN HERE ON
CERTIFIED CORRECT:

L. W. Scott
Registered Land Surveyor

DATE: 12/18/80

TIE SKETCH

Show at least four ties, also fence lines, roads, topo, size and type of witness trees and if off road - best way to arrive at corner.

