

PUBLIC LAND SURVEY MONUMENT RECORD

TYPE OF MONUMENT: HARRISON
 ADAMS COUNTY COORDINATES, NAD 83 (2007)

N. 218966.197

E. 580966.668

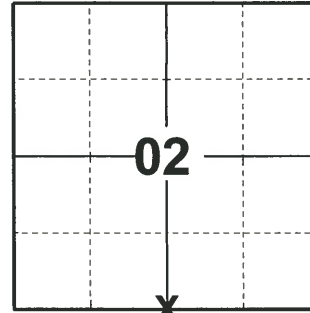
ELEVATION- DATUM

FIELD WORK DATE: 03/25/2019

BASIS FOR MONUMENT LOCATION

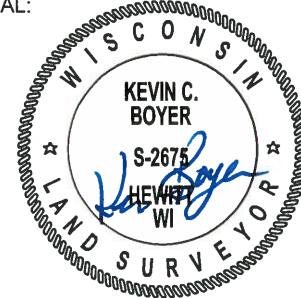
1981 - PLS 878 NO RECORD OF RESURVEY. NO EVIDENCE OF CORNER FOUND OTHER THAN A SMALL 1/2" IRON PIPE OF UNKNOWN ORIGIN. THIS CORNER IS SET ON A STRAIGHT LINE AND EQUIDISTANT BETWEEN SECTION CORNERS.

2019 - PLS 2675 FOUND HARRISON MONUMENT FLUSH WITH THE GROUND SURFACE, 1 TIE, AND 1 WITNESS. THE MONUMENT AGREES WITH THE EXISTING TIE AND WITNESS. ACCEPTED THE HARRISON MONUMENT AS THE CORNER LOCATION. SET 4 NEW TIES AND MEASURED TO THE EXISTING TIE AND WITNESS.



LOCATION
 (INDICATE CORNER BY "X")

SEAL:



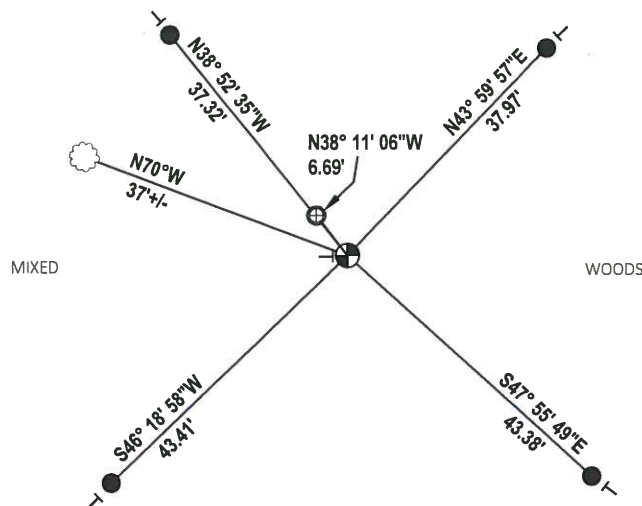
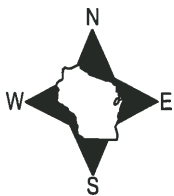
DATA SHOWN HERE ON THIS TIE SHEET IS CORRECT AND COMPLETE TO THE BEST OF MY KNOWLEDGE AND BELIEF.

PROFESSIONAL LAND SURVEYOR

DATE 5/1/19

- TIE SKETCH

NOTE: THE CORNER FALLS 400'± WEST OF CTH 'G'

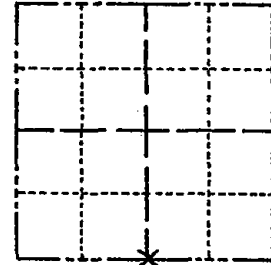


- SET 3/4" x 18" IRON REBAR, 1.50#/FT
- ⊙ FOUND 1" O.D. IRON PIPE
- ⊕ FOUND HARRISON MONUMENT
- ⊥ VINYL "T" POST
- ☼ WITNESS TREE

Government Land Corner Certificate

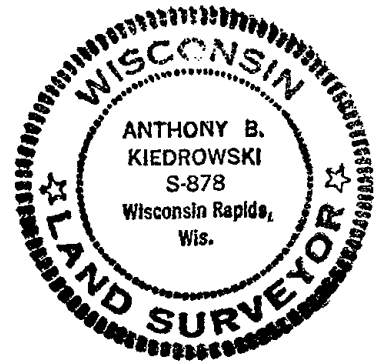
ADAMS County
 TYPE OF MONUMENT: Harrison
 STATE PLANE COORDINATES: N _____
 E _____
 ELEVATION — M.S.L. DATUM: _____
 THETA ANGLE: _____
 FIELD BOOK: 54 PAGE 71 A
 DRAWN BY: Lloyd W Scott

CORNER NO. 30
 SECTION 2
 TOWN 17
 RANGE 7



LOCATION
(Indicated by 'X')

SEAL:



DATA SHOWN HERE ON
CERTIFIED CORRECT:

Anthony B. Kiedrowski
Registered Land Surveyor

DATE: 1/30/81

TIE SKETCH

Show at least four ties, also fence lines, roads, topo, size and type of witness trees and if off road - best way to arrive at corner.

