

01 SECTION 17 TOWN 07 RANGE

ADAMS COUNTY

COUNTY CORNER NO: 33
ROMPORTOL ID: 41707010000

PUBLIC LAND SURVEY MONUMENT RECORD

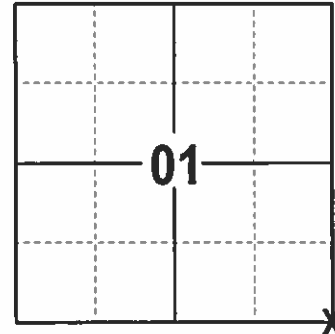
TYPE OF MONUMENT: HARRISON
ADAMS COUNTY COORDINATES, NAD 83 (2007)

N. 219027.766

E. 588866.443

ELEVATION- --- DATUM ---

FIELD WORK DATE: 1/12/2017



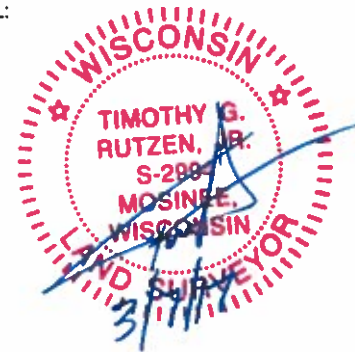
LOCATION
(INDICATE CORNER BY "X")

BASIS FOR MONUMENT LOCATION

1974 - PLS 878 REPLACED A 2 INCH IRON PIPE SET BY HIMSELF FOR THE BREISE SURVEY. THE ENTIRE SECTION WAS TRAVERSED AND THE LOCATION WAS VERIFIED. POINT IS IN A HOLE FROM AN ANCIENT ROTTED CORNER POST

2017 - PLS 2994 FOUND EXISTING HARRISON LEVEL WITH THE SURFACE AND 1 EXISTING WITNESS. THE HARRISON AGREES WITH EXISTING WITNESS. ACCEPTED HARRISON AND SET 4 NEW TIES.

SEAL:

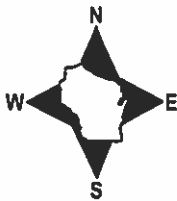


DATA SHOWN HERE ON THIS TIE SHEET IS CORRECT AND COMPLETE TO THE BEST OF MY KNOWLEDGE AND BELIEF.

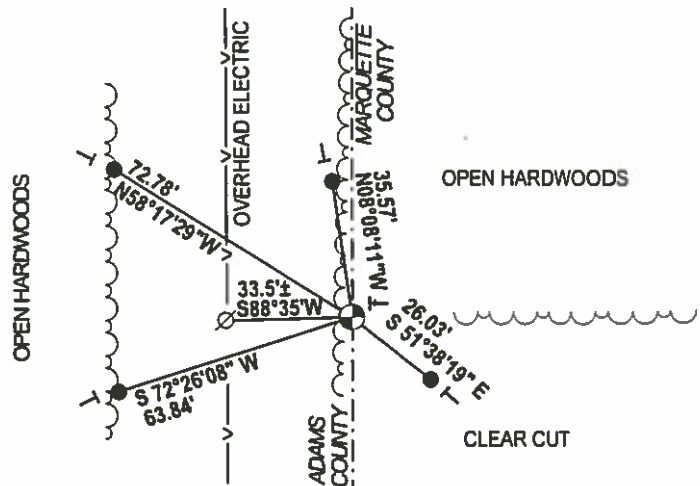
PROFESSIONAL LAND SURVEYOR

DATE 3/7/17

TIE SKETCH



- 3/4" x 18" IRON REBAR SET, 1.50#/FT
- ⊕ FOUND HARRISON
- ⊗ FOUND WITNESS POWER POLE
- ┌ VINYL "T" POST
- └ STEEL "T" POST



ADAMS COUNTY

CORNER NO. 393
 SECTION 1
 TOWN 17
 RANGE 7

Survey Monument Record

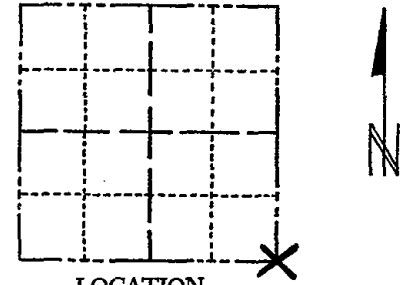
TYPE OF MONUMENT: Harrison standard

STATE PLANE COORDINATES: N _____
E _____

ELEVATION -- M.S.L. DATUM: _____

THETA ANGLE: _____

FIELD BOOK: _____ PAGE _____



LOCATION
(Indicated by 'X')

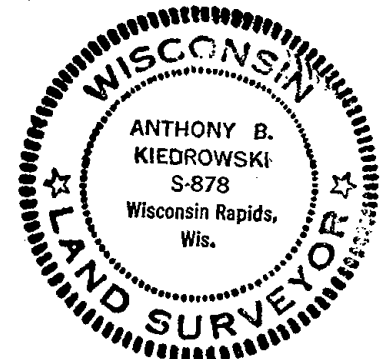
SEAL:

BASIS FOR MONUMENT LOCATION

(Use reverse side if necessary)

Show info such as: History of corner, with reference to Vol. and pg, dates, surveyor; exact description of monument replaced; if location computed, by taped or EDM traverse; landowner remarks, etc.

Replaced 2" iron pipe set by me
 in the Breise survey. Entire
 section traverse and location verified.
 Point is in hole from ancient
 rotted corner post.



CORNER O.K. 3-14-77 GR-SS
 " " 3 NEW TIES 8-17-82 PK-SS
 " " 3-20-87 SS
 " " 1-3-92 GR-SS
 1-NEW MON OK 10-28-97 JL
 CORNER OK 2-21-02 JG

CERTIFIED CORRECT:

Anthony B. Kiedrowski
 Registered Land Surveyor

DATE: 6/3/74

TIE SKETCH OK, 9-19-07-JG

OK 01-26-12 MS

(Show at least four ties)

Ties to nail and cap.

