

08
SECTION

17
TOWN

07
RANGE

ADAMS COUNTY

COUNTY CORNER NO: 44
ROMPORTOL ID: 41707080020

PUBLIC LAND SURVEY MONUMENT RECORD

TYPE OF MONUMENT: HARRISON
ADAMS COUNTY COORDINATES, NAD 83 (2007)

N. 213649.237

E. 565153.947

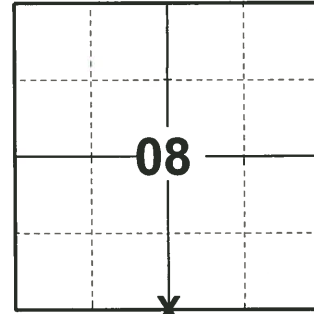
ELEVATION- _____ DATUM _____

FIELD WORK DATE: 04/03/2019

BASIS FOR MONUMENT LOCATION

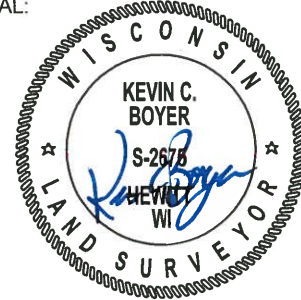
1982 - PLS 1444 THIS CORNER WAS SET ON LINE BETWEEN SECTION CORNERS AND AT WELL ESTABLISHED POSSESSION LINES TO THE NORTH AND SOUTH. EXCAVATION AT THIS LOCATION REVEALED NO EVIDENCE OF THE ORIGINAL CORNER OR ANY RESURVEY OF CORNER.

2019 - PLS 2675 FOUND HARRISON 3" BELOW THE ROAD SURFACE AND 2 WITNESSES. THE MONUMENT AGREES WITH THE 2 WITNESSES. ACCEPTED THE HARRISON AS THE CORNER LOCATION. SET 3 NEW TIES AND MEASURED TO A FOUND PROPERTY IRON AND THE EXISTING WITNESSES.



LOCATION
(INDICATE CORNER BY "X")

SEAL:



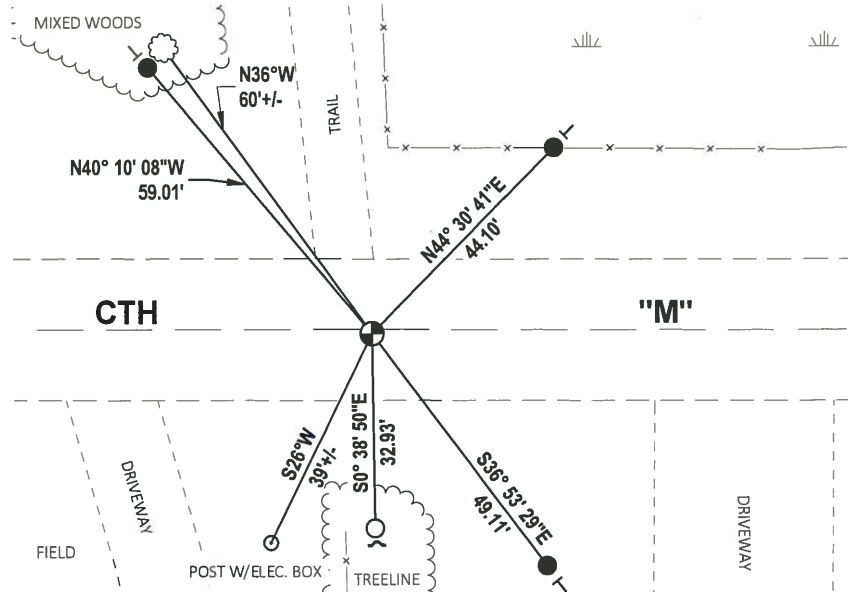
DATA SHOWN HERE ON THIS TIE SHEET IS CORRECT AND COMPLETE TO THE BEST OF MY KNOWLEDGE AND BELIEF.

PROFESSIONAL LAND SURVEYOR

DATE 5/1/19

- TIE SKETCH

NOTE: THE CORNER LANDS ±1.0' SOUTH OF CTH "M" CENTERLINE.

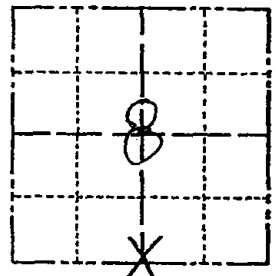


- SET 3/4" x 18" IRON REBAR, 1.50#/FT
- FOUND 3/4" IRON ROD
- ⊕ FOUND HARRISON MONUMENT
- ┌ STEEL FENCE POST
- └ VINYL "T" POST
- ☉ WITNESS TREE

Government Land Corner Certificate

ADAMS County
 TYPE OF MONUMENT: HARRISON
 STATE PLANE COORDINATES: N _____
 E _____
 ELEVATION — M.S.L. DATUM: _____
 THETA ANGLE: _____
 FIELD BOOK: 92 PAGE 116
 DRAWN BY: SJH

CORNER NO. 44
 SECTION 8
 TOWN 17
 RANGE 7

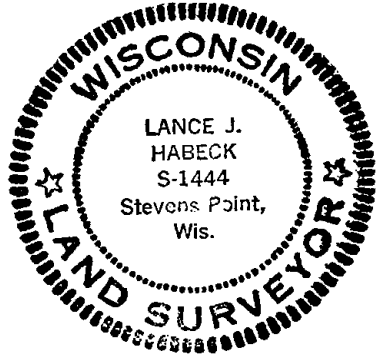


BASIS FOR MONUMENT LOCATION

Show info such as: History of corner, with reference to Vol. and pg., dates, surveyor; exact description of monument replaced; if location computed, by taped or EDM traverse; landowner remarks, etc. (Use reverse side if necessary)

This corner was set on line between section corners and at well established possession lines to the north and south. Excavation at this location revealed no evidence of the original corner or any resurvey corner.

SEAL:



DATA SHOWN HERE ON CERTIFIED CORRECT:

Lance J. Habeck
 Registered Land Surveyor

DATE: 9/29/82

TIE SKETCH

Show at least four ties, also fence lines, roads, topo, size and type of witness trees and if off road - best way to arrive at corner.

