

## PUBLIC LAND SURVEY MONUMENT RECORD

TYPE OF MONUMENT: HARRISON  
 ADAMS COUNTY COORDINATES, NAD 83 (2007)

N. 213656.395

E. 570460.904

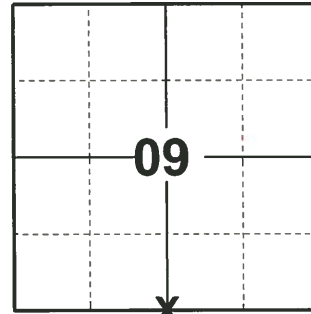
ELEVATION- \_\_\_\_\_ DATUM \_\_\_\_\_

FIELD WORK DATE: 04/03/2019

### BASIS FOR MONUMENT LOCATION

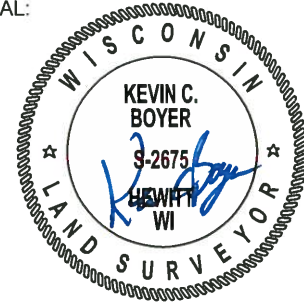
1974 - PLS 1103 EXCAVATION WITH BACKHOE YIELDED NO EVIDENCE AS TO THE LOCATION OF THE ORIGINAL CORNER. RAN EDM/TRANSIT TRAVERSE OF SECTION 9. SET QUARTER CORNER EQUIDISTANT AND ON LINE BETWEEN SOUTHEAST AND SOUTHWEST SECTION CORNERS.

2019 - PLS 2675 FOUND MAGNAIL IN THE ROAD SURFACE, REMOVED AND FOUND HARRISON 4" BELOW THE ROAD SURFACE AND 1 TIE. THE MONUMENT AGREES WITH THE EXISTING TIE. ACCEPTED THE HARRISON AS THE CORNER LOCATION. SET 3 NEW TIES AND MEASURED TO THE EXISTING TIE.



**LOCATION**  
 (INDICATE CORNER BY "X")

SEAL:



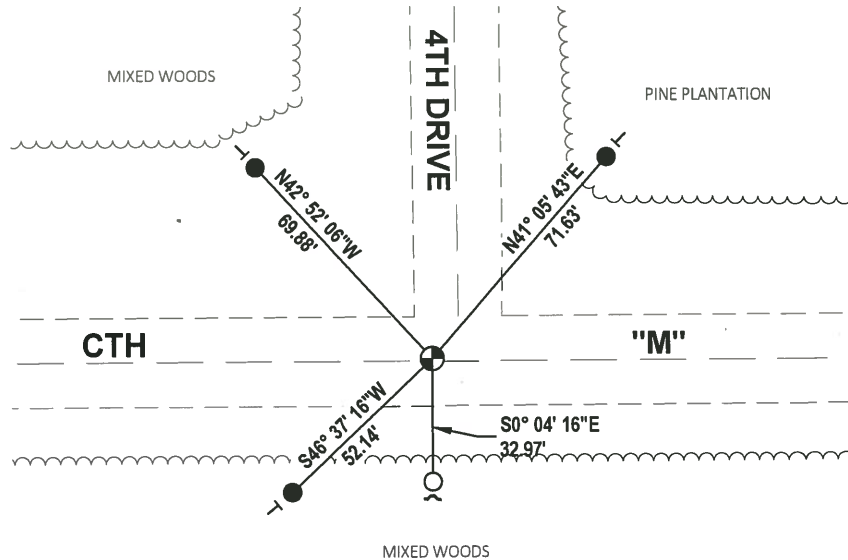
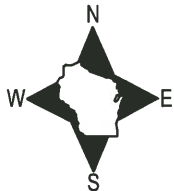
DATA SHOWN HERE ON THIS TIE SHEET IS CORRECT AND COMPLETE TO THE BEST OF MY KNOWLEDGE AND BELIEF.

PROFESSIONAL LAND SURVEYOR

DATE 5/1/19

### TIE SKETCH

NOTE: THE CORNER LANDS ±1.0' NORTH OF CTH  
 "M" CENTERLINE AND ±6.0' WEST OF 4TH DRIVE  
 CENTERLINE.



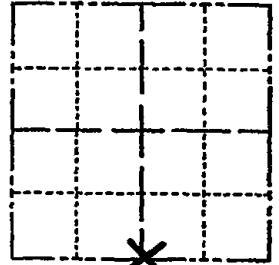
- SET 3/4" x 18" IRON REBAR, 1.50#/FT
- FOUND 3/4" IRON ROD
- ⊕ FOUND HARRISON MONUMENT
- ~ STEEL FENCE POST
- ⊥ VINYL "T" POST

# ADAMS COUNTY

## Survey Monument Record

TYPE OF MONUMENT: Harrison Standard  
 STATE PLANE COORDINATES: N \_\_\_\_\_  
 E \_\_\_\_\_  
 ELEVATION — M.S.L. DATUM: \_\_\_\_\_  
 THETA ANGLE: \_\_\_\_\_  
 FIELD BOOK: \_\_\_\_\_ PAGE \_\_\_\_\_

CORNER NO. 461  
 SECTION 9  
 TOWN 17  
 RANGE 7



LOCATION  
(Indicated by 'X')

### BASIS FOR MONUMENT LOCATION

(Use reverse side if necessary)

Show info such as: History of corner, with reference to Vol. and pg. dates, surveyor; exact description of monument replaced; if location computed, by taped or EDM traverse; landowner remarks, etc.

SEAL:



Excavation with back-hoe yielded no evidence as to the location of the original corner.

Ran EDM/transit traverse of Section 9. Set quarter corner equidistant and on line between Southeast and Southwest Section corners.

CERTIFIED CORRECT:

Dale C. Hagen  
Registered Land Surveyor

DATE: June 28, 1974

CORNER	O.K.	3-14-77	GR-55
"	"	3-25-82	GR-55
"	"	1-23-87	JL-55
"	"	12-12-91	KZ-56
1-GONE, 1-NEW		1-22-97	JG-55
1-GONE, 1-NEW TIE		2-06-02-96	

### TIE SKETCH

(Show at least four ties)

