

PUBLIC LAND SURVEY MONUMENT RECORD

TYPE OF MONUMENT: HARRISON
 ADAMS COUNTY COORDINATES, NAD 83 (2007)

N. 213684.022

E. 581021.982

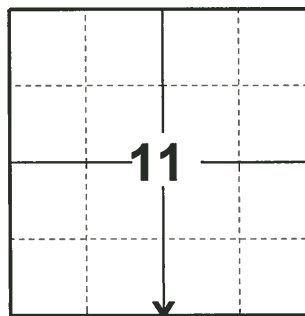
ELEVATION- _____ DATUM _____

FIELD WORK DATE: 03/21/2019

BASIS FOR MONUMENT LOCATION

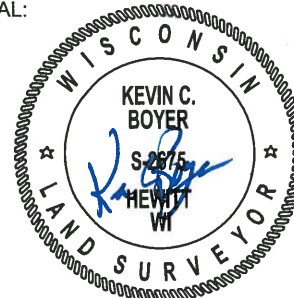
1977 - PLS 1103 EXCAVATED WITH BACKHOE IN SEARCH OF STONE CALLED FOR BY M.C. SMITH. COULD NOT LOCATE IT. RELOCATED CORNER BY SINGLE PROPORTIONATE MEASURE BETWEEN NORTHEAST AND NORTHWEST CORNERS OF SECTION 14. NOTE: M.C. SMITH DID NOT USE PROPER PROCEDURE FOR ESTABLISHING STONE, WHICH WAS NOT RECOVERED.

2019 - PLS 2675 FOUND HARRISON 6" BELOW THE ROAD SURFACE AND 1 WITNESS. THE MONUMENT AGREES WITH THE WITNESS. ACCEPTED THE HARRISON AS THE CORNER LOCATION. SET 4 NEW TIES AND MEASURED TO THE EXISTING WITNESS.



LOCATION
 (INDICATE CORNER BY "X")

SEAL:



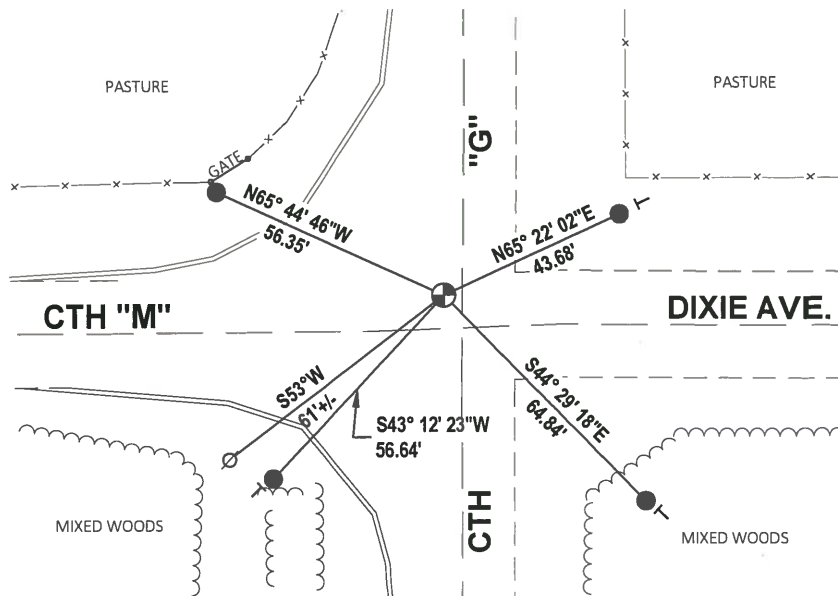
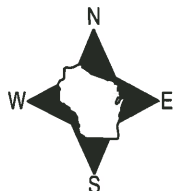
DATA SHOWN HERE ON THIS TIE SHEET IS CORRECT AND COMPLETE TO THE BEST OF MY KNOWLEDGE AND BELIEF.

PROFESSIONAL LAND SURVEYOR

DATE 5/11/19

- TIE SKETCH

NOTE: THE CORNER FALLS 4.5'± WEST OF CTH "G" CENTERLINE AND 7'± NORTH OF CTH "M"/DIXIE AVE. CENTERLINE.

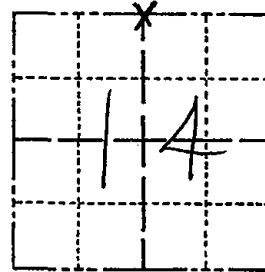


- SET 3/4" x 18" IRON REBAR, 1.50#/FT
- ⊕ FOUND HARRISON MONUMENT
- ⊘ WITNESS POWER POLE
- | VINYL "T" POST

Government Land Corner Certificate

ADAMS County
 TYPE OF MONUMENT: HARRISON Mon.
 STATE PLANE COORDINATES: N _____
 E _____
 ELEVATION — M.S.L. DATUM: _____
 THETA ANGLE: _____
 FIELD BOOK: 57 PAGE 7
 DRAWN BY: G. RHINEHART

CORNER NO. 50
 SECTION 14
 TOWN 17
 RANGE 7



LOCATION
 (Indicated by 'X')

BASIS FOR MONUMENT LOCATION

Show info such as: History of corner, with reference to Vol. and pg., dates, surveyor; exact description of monument replaced; if location computed, by taped or EDM traverse; landowner remarks, etc. (Use reverse side if necessary)

Excavated with backhoe in search of stone called for by M.C. Smith. Could not locate it.

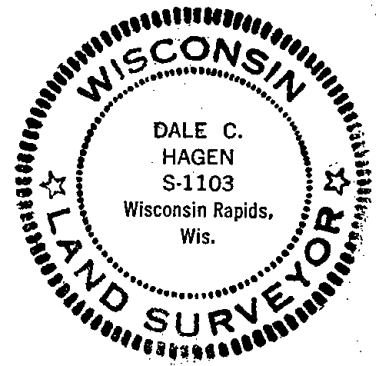
Relocated corner by single proportionate measure between Northeast and Northwest corners of Section 14.

Harrison set July 25, 1977.

NOTE

M.C. Smith did not use proper procedure for for establishing stone, which was not recovered.

SEAL:



DATA SHOWN HERE ON
 CERTIFIED CORRECT.

Dale C. Hagen
 Registered Land Surveyor

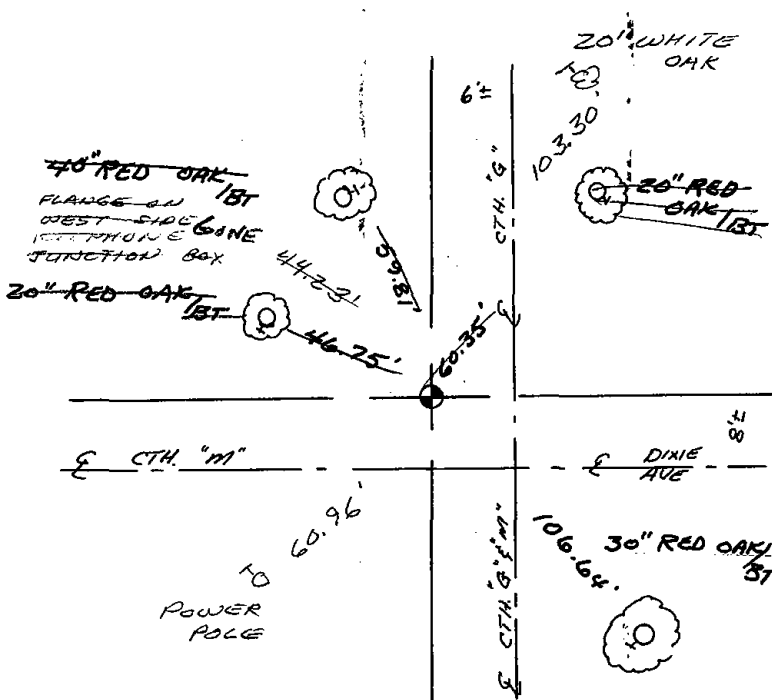
DATE: August 2, 1977

TIE SKETCH

Show at least four ties, also fence lines, roads, topo, size and type of witness trees' and if off road - best way to arrive at corner.

NORE

Ties in trees to
 nail in disc.



MAINTENANCE RECORD

Date	Init.	Remarks
6-11-82	PK-SS	HAR. O.K. 3 NEW TIES
1-23-87	JL-SS	OK
12-12-91	KZ-JG	OK
1-22-97	JG-SS	OK
2-20-02	JG	1-GONE
9-19-07	JG	OK
01-26-12	MS	OK