

## PUBLIC LAND SURVEY MONUMENT RECORD

TYPE OF MONUMENT: HARRISON  
 ADAMS COUNTY COORDINATES, NAD 83 (2007)

N. 213726.473

E. 586307.331

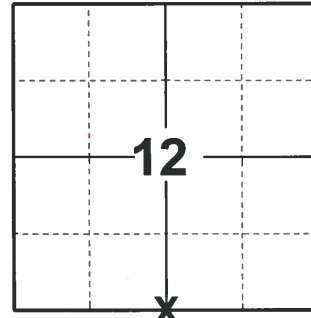
ELEVATION- - - - - DATUM - - - - -

FIELD WORK DATE: 03/21/2019

### BASIS FOR MONUMENT LOCATION

1981 - PLS 878 EXCAVATED WITH BACKHOE, FOUND NOTHING. CORNER SET ON LINE AND EQUIDISTANT BETWEEN SECTION CORNERS.

2019 - PLS 2675 FOUND HARRISON 3" BELOW THE ROAD SURFACE, 1 TIE AND 1 WITNESS. THE MONUMENT AGREES WITH THE TIE AND WITNESS. ACCEPTED THE HARRISON AS THE CORNER LOCATION. SET 3 NEW TIES AND MEASURED TO THE EXISTING TIE AND WITNESS.



**LOCATION**  
 (INDICATE CORNER BY "X")

SEAL:



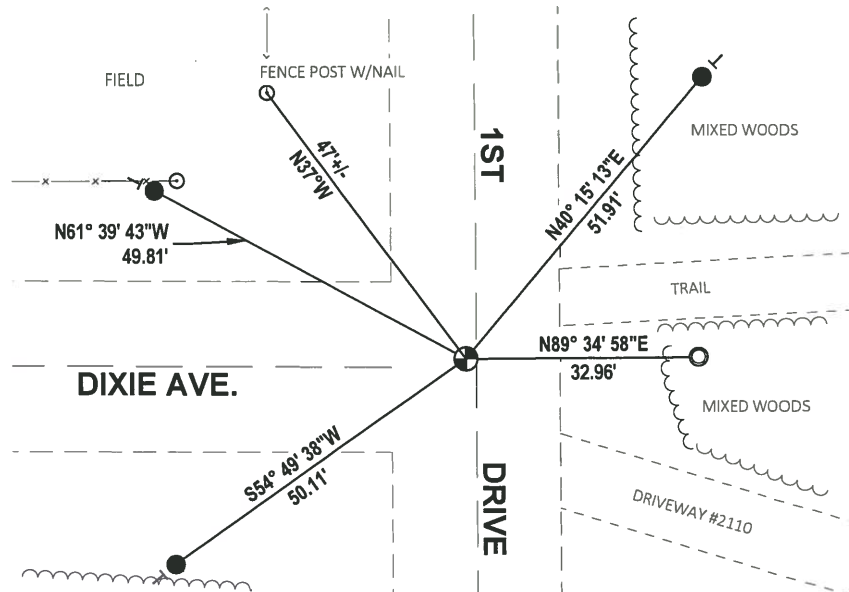
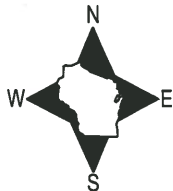
DATA SHOWN HERE ON THIS TIE SHEET IS CORRECT AND COMPLETE TO THE BEST OF MY KNOWLEDGE AND BELIEF.

PROFESSIONAL LAND SURVEYOR

DATE 5/1/19

### - TIE SKETCH

NOTE: THE CORNER FALLS 1.5± WEST OF 1ST DRIVE CENTERLINE AND 2± NORTH OF DIXIE AVE CENTERLINE.

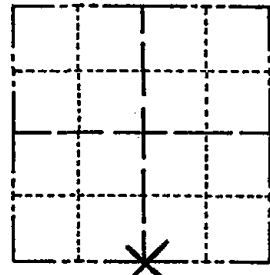


- SET 3/4" x 18" IRON REBAR, 1.50#/FT
- FOUND 1-1/4" O.D. IRON PIPE
- ⊕ FOUND HARRISON MONUMENT
- ┆ VINYL "T" POST

# Government Land Corner Certificate

ADAMS County  
 TYPE OF MONUMENT: Harrison  
 STATE PLANE COORDINATES: N \_\_\_\_\_  
 E \_\_\_\_\_  
 ELEVATION — M.S.L. DATUM: \_\_\_\_\_  
 THETA ANGLE: \_\_\_\_\_  
 FIELD BOOK: 87 PAGE 125 A  
 DRAWN BY: R. NUBER

CORNER NO. 52  
 SECTION 12  
 TOWN 17  
 RANGE 7



LOCATION  
 (Indicated by 'X')

## BASIS FOR MONUMENT LOCATION

Show info such as: History of corner, with reference to Vol. and pg., dates, surveyor; exact description of monument replaced; if location computed, by taped or EDM traverse; landowner remarks, etc. (Use reverse side if necessary)

Excavated with backhoe, found nothing.  
 corner set on line and equidistant between Section corners.

SEAL:



DATA SHOWN HERE ON  
 CERTIFIED CORRECT:

*Anthony B. Kiedrowski*  
 Registered Land Surveyor

DATE: 2/3/81

## TIE SKETCH

Show at least four ties, also fence lines, roads, topo, size and type of witness trees' and if off road - best way to arrive at corner.

