

## PUBLIC LAND SURVEY MONUMENT RECORD

TYPE OF MONUMENT: HARRISON  
 ADAMS COUNTY COORDINATES, NAD 83 (2007)

N. 211059.603

E. 557452.788

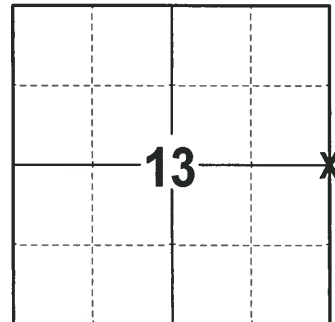
ELEVATION-      DATUM     

FIELD WORK DATE: 12/05/2017

### BASIS FOR MONUMENT LOCATION

1972 - PLS 878 LOCATION OF THIS CORNER WAS CALCULATED BY TRAVERSING THE SECTION AND EXTENDING THE NORTH LINE OF DEER RUN ACRES (A SURVEY BY SAM MULLEN) TO THE INTERSECTION WITH THE WEST LINE OF THE SECTION. THIS POINT IS NOT ON A STRAIGHT LINE BETWEEN CORNERS, BUT IS EQUIDISTANT THERE FROM. SET A HARRISON MONUMENT AT THE CALCULATED LOCATION AND TIED OUT.

2017 - PLS 2994 FOUND A HARRISON MONUMENT FLUSH WITH THE GROUND SURFACE, 1 TIE AND 1 WITNESS TREE. THE MONUMENT AGREES WITH THE EXISTING TIE AND WITNESS TREE. ACCEPTED THE HARRISON MONUMENT AS THE CORNER LOCATION. SET 3 NEW TIES AND MEASURED TO THE TIES AND WITNESS TREE.



**LOCATION**  
 (INDICATE CORNER BY "X")

SEAL:

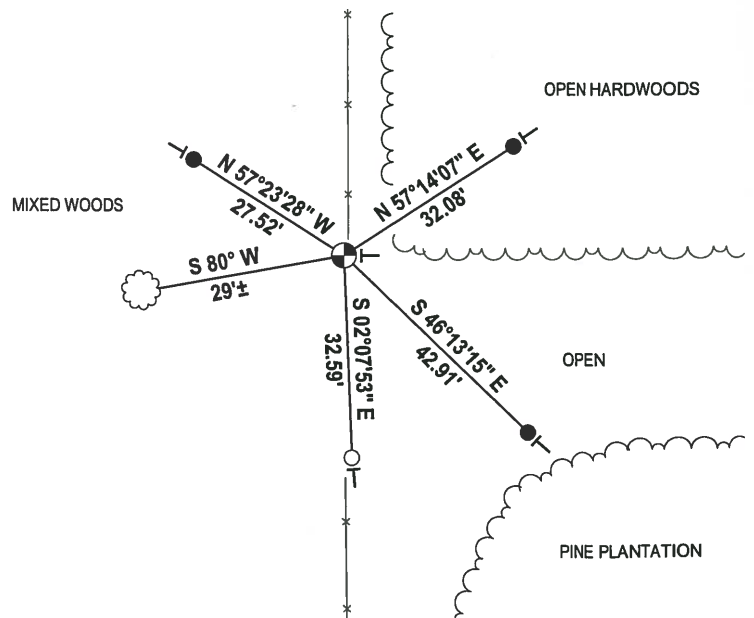
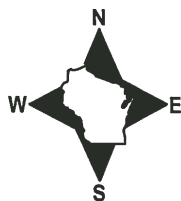


DATA SHOWN HERE ON THIS TIE SHEET IS CORRECT AND COMPLETE TO THE BEST OF MY KNOWLEDGE AND BELIEF.

PROFESSIONAL LAND SURVEYOR

DATE 1-4-18

### - TIE SKETCH



- 3/4" x 18" IRON REBAR SET, 1.50#/FT
- 1-1/4" O.D. GALVANIZED PIPE FOUND
- ⊕ HARRISON FOUND
- VINYL "T" POST
- ☁ WITNESS TREE FOUND

ADAMS COUNTY

CORNER NO. 194

Survey Monument Record

SECTION 18

TYPE OF MONUMENT: HARRISON MONUMENT

TOWN 17

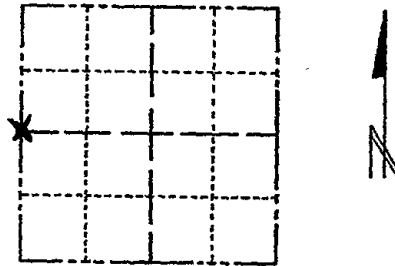
STATE PLANE COORDINATES: N \_\_\_\_\_ E \_\_\_\_\_

RANGE 7

ELEVATION - M.S.L. DATUM: \_\_\_\_\_

THETA ANGLE: \_\_\_\_\_

FIELD BOOK: 102 PAGE 62



LOCATION (Indicated by 'X')

SEAL:

BASIS FOR MONUMENT LOCATION

(Use reverse side if necessary)

Show info such as: History of corner, with reference to Vol. and pg, dates, surveyor; exact description of monument replaced; if location computed, by taped or EDM traverse; landowner remarks, etc.

Location of this corner was done by traverseing.

September 21, 1972

Anthony B. Kiedrowski R.L.S. 878

Set by extending the north line of Deer Run Acres (A survey by Sam Mullen) to its intersection with the west line of the section.

This point is not on a straight line between corners, but is equidistant therefrom.

CERTIFIED CORRECT:

Handwritten signature of Anthony B. Kiedrowski, Registered Land Surveyor

DATE: 1-30-73

TIE SKETCH

(Show at least four ties)

- Corner O.K. 3-14-77 GR-SS
" " 8-17-82 PK-SS
" " 3-24-87 GR
ALL OK 7-20-92 JG
" " 10-28-97 JG
" " 2-06-02 JG
1 NEW TIE 3-2-12 SS

