

18  
SECTION

17  
TOWN

07  
RANGE

# ADAMS COUNTY

COUNTY CORNER NO: 63  
ROMPORTOL ID: 41707180000

## PUBLIC LAND SURVEY MONUMENT RECORD

TYPE OF MONUMENT: HARRISON (BROKEN-TOP)  
ADAMS COUNTY COORDINATES, NAD 83 (2007)

N. 208359.290

E. 562516.365

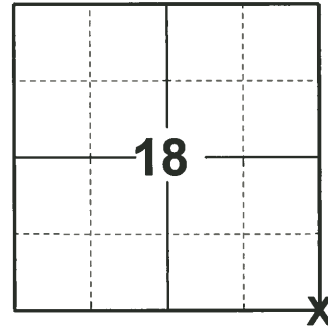
ELEVATION- - - - - DATUM - - - - -

FIELD WORK DATE: 04/16/2019

### BASIS FOR MONUMENT LOCATION

1973 - PLS 878 LOCATION OF THIS CORNER WAS DETERMINED TRAVERSING AND RE RUNNING S. MULLENS SURVEY OF DEER RUN ACERS.

2019 - PLS 2675 FOUND HARRISON (BROKEN-TOP) 12" BELOW THE ROAD SURFACE, 2 WITNESSES, AND 1 TIE. THE MONUMENT AGREES WITH THE EXISTING TIE AND WITNESSES. ACCEPTED THE HARRISON (BROKEN-TOP) AS THE CORNER LOCATION. SET 3 NEW TIES AND MEASURED TO THE EXISTING TIE AND WITNESSES.



LOCATION  
(INDICATE CORNER BY "X")

SEAL:



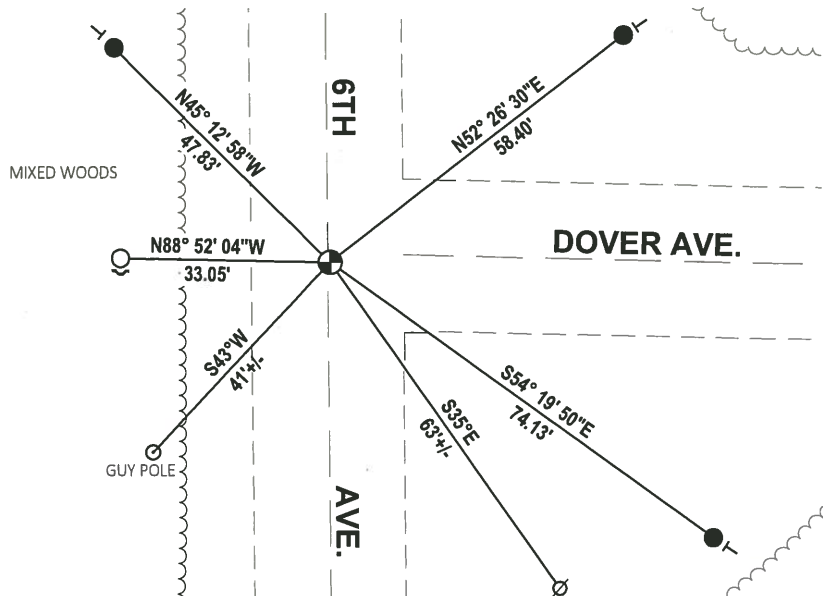
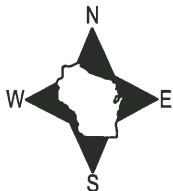
DATA SHOWN HERE ON THIS TIE SHEET IS CORRECT AND COMPLETE TO THE BEST OF MY KNOWLEDGE AND BELIEF.

PROFESSIONAL LAND SURVEYOR

DATE 5/1/19

### - TIE SKETCH

NOTE: THE CORNER LANDS ON THE CENTERLINE OF 6TH AVE. AND 1± SOUTH OF DOVER AVE. CENTERLINE.



- SET 3/4" x 18" IRON REBAR, 1.50#/FT
- FOUND 3/4" IRON ROD
- ⊕ FOUND HARRISON (BROKEN-TOP) MONUMENT
- ∅ WITNESS POWER POLE
- ↵ STEEL FENCE POST
- | VINYL "T" POST

ADAMS COUNTY

CORNER NO. 196

Survey Monument Record

SECTION 18

TYPE OF MONUMENT: HARRISON MONUMENT

TOWN 17

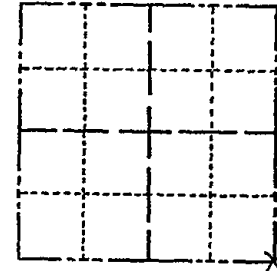
STATE PLANE COORDINATES: N E

RANGE 7

ELEVATION - M.S.L. DATUM:

THETA ANGLE:

FIELD BOOK: 102 PAGE 64



LOCATION (Indicated by 'X')

BASIS FOR MONUMENT LOCATION

(Use reverse side if necessary)

Show info such as: History of corner, with reference to Vol. and pg, dates, surveyor; exact description of monument replaced; if location computed, by taped or EDM traverse; landowner remarks, etc.

SEAL:



Location of this corner was determined traversing and (see below) September 21, 1972

Anthony B. Kiedrowski R.L.S. 878

rerunning Sam Mullen's survey of Deer Run Acres.

CORNER	O.K.	3-14-77	GR-SS
"	"	3-25-82	GR-SS
"	"	1-22-87	JL-SS
"	"	11-25-91	KZ-GR
TIES	OK	1-29-97	CR-JG

CERTIFIED CORRECT:

Anthony B. Kiedrowski, Registered Land Surveyor

DATE: 1-30-73

TIE SKETCH 1-NEW TIE 2-06-02-JG 2-GONE, 2-NEW, 9-13-07-JG (Show at least four ties) 1-NEW TIE 01-27-12 MS

