

## PUBLIC LAND SURVEY MONUMENT RECORD

TYPE OF MONUMENT: HARRISON (BROKEN-TOP)  
 ADAMS COUNTY COORDINATES, NAD 83 (2007)

N. 208359.567

E. 567832.929

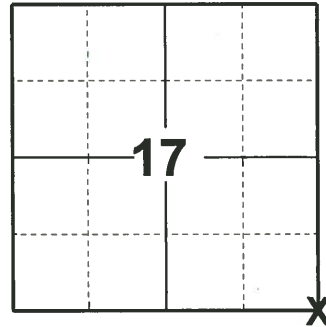
ELEVATION- \_\_\_\_\_ DATUM \_\_\_\_\_

FIELD WORK DATE: 04/10/2019

### BASIS FOR MONUMENT LOCATION

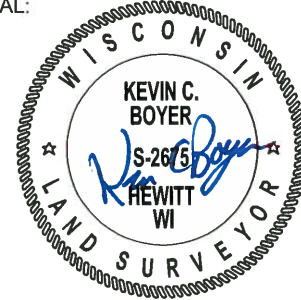
1979 - PLS 878 EXCAVATED WITH BACKHOE. FOUND 8"X9"X6" DEEP CHIRT STONE. STONE OBVIOUSLY DUG IN. LOWERED STONE AND SET HARRISON ON TOP. STONE ON OF RECORD.

2019 - PLS 2675 FOUND HARRISON (BROKEN-TOP) 10" BELOW THE ROAD SURFACE AND 2 WITNESSES. THE MONUMENT AGREES WITH BOTH WITNESSES. ACCEPTED THE HARRISON (BROKEN-TOP) AS THE CORNER LOCATION. SET 4 NEW TIES AND MEASURED TO THE EXISTING WITNESSES.



**LOCATION**  
 (INDICATE CORNER BY "X")

SEAL:



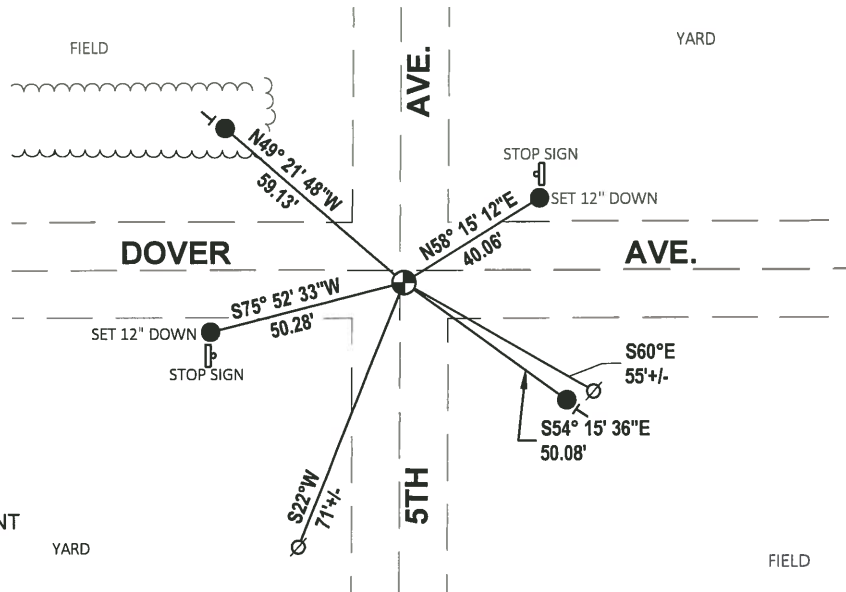
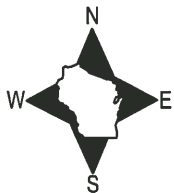
DATA SHOWN HERE ON THIS TIE SHEET IS CORRECT AND COMPLETE TO THE BEST OF MY KNOWLEDGE AND BELIEF.

PROFESSIONAL LAND SURVEYOR

DATE 5/1/19

### TIE SKETCH

NOTE: THE CORNER FALLS ±3' SOUTH OF DOVER AVE. CENTERLINE AND ±1' EAST OF 5TH AVE. CENTERLINE.

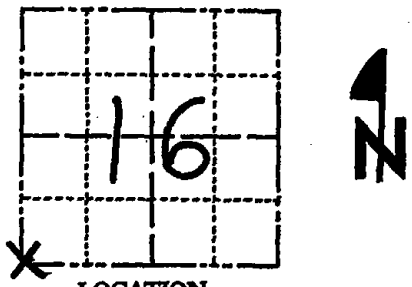


- SET 3/4" x 18" IRON REBAR, 1.50#/FT
- ⊕ FOUND HARRISON (BROKEN-TOP) MONUMENT
- ⊘ WITNESS POWER POLE
- | VINYL "T" POST

# Government Land Corner Certificate

ADAMS County  
 TYPE OF MONUMENT: HARRISON  
 STATE PLANE COORDINATES: N \_\_\_\_\_  
 E \_\_\_\_\_  
 ELEVATION — M.S.L. DATUM: \_\_\_\_\_  
 THETA ANGLE: \_\_\_\_\_  
 FIELD BOOK: 54 (102) PAGE 54 (6)  
 DRAWN BY: B.S.

CORNER NO. 65  
 SECTION 16  
 TOWN 17  
 RANGE 7



LOCATION  
 (Indicated by 'X')

SEAL:



## BASIS FOR MONUMENT LOCATION

Show info such as: History of corner, with reference to Vol. and pg., dates, surveyor; exact description of monument replaced; if location computed, by taped or EDM traverse; landowner remarks, etc. (Use reverse side if necessary)

Excavated with backhoe. Found 8" x 9" x 6" deep chert stone. Stone obviously dug in. Lowered stone and set Harrison on top. Stone not of record.

DATA SHOWN HERE ON  
 CERTIFIED CORRECT:

*Anthony B. Kiedrowski*  
 Registered Land Surveyor

DATE: 5/10/79

## TIE SKETCH

Show at least four ties, also fence lines, roads, topo, size and type of witness trees and if off road - best way to arrive at corner.

