

PUBLIC LAND SURVEY MONUMENT RECORD

TYPE OF MONUMENT: HARRISON
 ADAMS COUNTY COORDINATES, NAD 83 (2007)

N. 208379.102

E. 570472.891

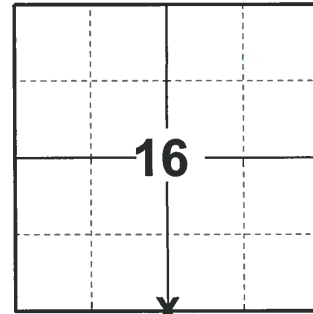
ELEVATION- DATUM

FIELD WORK DATE: 04/10/2019

BASIS FOR MONUMENT LOCATION

1979 - PLS 878 EXCAVATED WITH BACKHOE. FOUND 4"x4" SQUARE X 13" DUG IN UPRIGHT STONE, DOWN 13" LOWERED STONE AND SET HARRISON ON TOP. STONE CALLED FOR BY ZENUS WISE PER OLD NOTES VOL.2, MARCH 5, 1878.

2019 - PLS 2675 FOUND HARRISON 2" BELOW THE ROAD SURFACE AND 2 WITNESSES. THE MONUMENT AGREES WITH BOTH WITNESSES. ACCEPTED THE HARRISON AS THE CORNER LOCATION. SET 4 NEW TIES AND MEASURED TO THE EXISTING WITNESSES.



LOCATION
 (INDICATE CORNER BY "X")

SEAL:



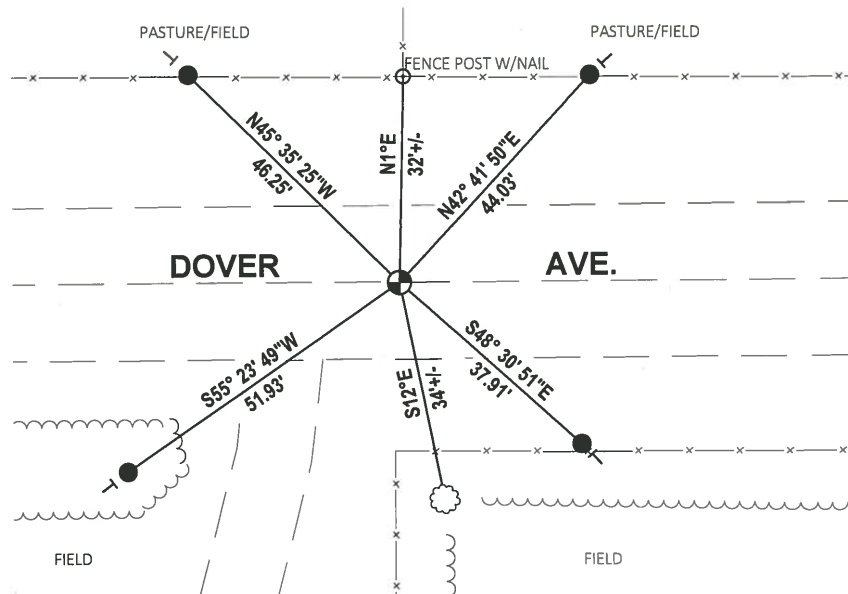
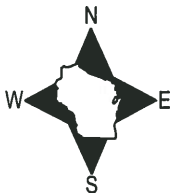
DATA SHOWN HERE ON THIS TIE SHEET IS CORRECT AND COMPLETE TO THE BEST OF MY KNOWLEDGE AND BELIEF.

PROFESSIONAL LAND SURVEYOR

DATE 5/1/19

- TIE SKETCH

NOTE: THE CORNER FALLS ON THE CENTERLINE OF DOVER AVE.

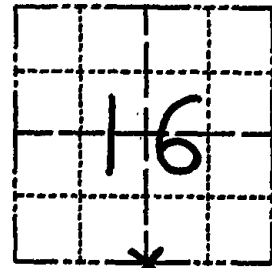


- SET 3/4" x 18" IRON REBAR, 1.50#/FT
- ⊕ FOUND HARRISON MONUMENT
- ┌ VINYL "T" POST
- ⊙ WITNESS TREE

Government Land Corner Certificate

ADAMS County
 TYPE OF MONUMENT: HARRISON
 STATE PLANE COORDINATES: N _____
 E _____
 ELEVATION — M.S.L. DATUM: _____
 THETA ANGLE: _____
 FIELD BOOK: 54 (122) PAGE 55 (6)
 DRAWN BY: B.S.

CORNER NO. 66
 SECTION 16
 TOWN 17
 RANGE 7



LOCATION
 (Indicated by 'X')

SEAL:



DATA SHOWN HERE ON
 CERTIFIED CORRECT:

Anthony B. Kiedrowski
 Registered Land Surveyor
 DATE: 5/10/79

Excavated with backhoe. Found 4 x 4" square x 13" dug in upright stone, down 13". Lowered stone an- set Harrison on top. Stone called for by Zenus Wise per old notes Vol. 2, March 5, 1878.

TIE SKETCH

Show at least four ties, also fence lines, roads, topo, size and type of witness trees and if off road - best way to arrive at corner.

