

PUBLIC LAND SURVEY MONUMENT RECORD

TYPE OF MONUMENT: HARRISON
ADAMS COUNTY COORDINATES, NAD 83 (2007)

N. 208394.799

E. 581068.892

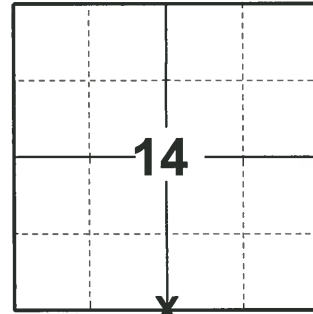
ELEVATION- DATUM

FIELD WORK DATE: 04/04/2019

BASIS FOR MONUMENT LOCATION

1975 - PLS 1103 RAN EDM/TRANSIT TRAVERSE AROUND SECTIONS 22, 23, AND 24 TO DETERMINE SEARCH AREAS. EXCAVATION WITH BACKHOE YIELDED NO EVIDENCE OF THE ORIGINAL CORNER OR ANY REMONUMENTATION. SET CORNER EQUIDISTANT AND ON LINE BETWEEN ADJACENT SECTION CORNERS.

2019 - PLS 2675 FOUND HARRISON 6" BELOW THE GROUND, 1 TIE, AND 3 WITNESSES. THE MONUMENT AGREES WITH THE TIE AND WITNESSES. ACCEPTED THE HARRISON AS THE CORNER LOCATION. SET 3 NEW TIES AND MEASURED TO THE EXISTING TIE AND WITNESSES.



LOCATION
(INDICATE CORNER BY "X")

SEAL:



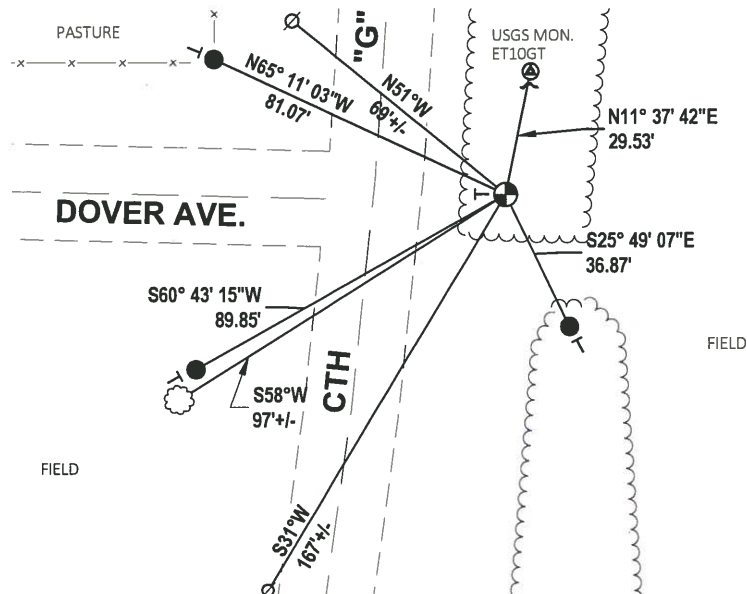
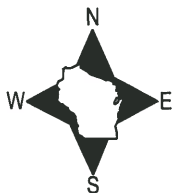
DATA SHOWN HERE ON THIS TIE SHEET IS CORRECT AND COMPLETE TO THE BEST OF MY KNOWLEDGE AND BELIEF.

PROFESSIONAL LAND SURVEYOR

DATE 5/1/19

- TIE SKETCH

NOTE: THE CORNER FALLS ±33.4' EAST OF CTH "G" CENTERLINE.



- SET 3/4" x 18" IRON REBAR, 1.50#/FT
- ⊕ FOUND USGS MONUMENT
- ⊕ FOUND HARRISON MONUMENT
- ⊙ WITNESS POWER POLE
- ┘ STEEL FENCE POST
- └ VINYL "T" POST
- ⊙ WITNESS TREE

ADAMS COUNTY

Survey Monument Record

TYPE OF MONUMENT: Standard Harrison

STATE PLANE COORDINATES: N _____
E _____

ELEVATION — M.S.L. DATUM: _____

THETA ANGLE: _____

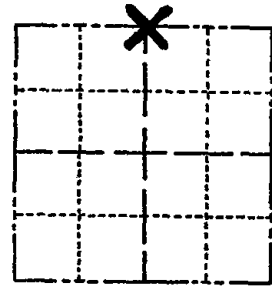
FIELD BOOK: _____ PAGE _____

CORNER NO. 778 ⁷⁰

SECTION 23

TOWN 17

RANGE 7



LOCATION
(Indicated by 'X')

SEAL:

BASIS FOR MONUMENT LOCATION

(Use reverse side if necessary)

Show info such as: History of corner, with reference to Vol. and pg, dates, surveyor; exact description of monument replaced; if location computed, by taped or EDM traverse; landowner remarks, etc.

Ran EDM/transit traverse around Sections 22, 23 and 24 to determine search areas.

Excavation with backhoe yielded no evidence of the original corner or any remonumentation.

Set corner Equidistant and on line between adjacent section corners.



CERTIFIED CORRECT:

Dale C. Hagen
Registered Land Surveyor

DATE: August 7, 1975

CORNER	O.K.	3-28-77	GR-SS
"	"	6-11-82	PK-SS
"	"	1-22-87	JL-SS
"	"	12-12-91	KZ-JG
TIES	OK	1-29-77	CR-JG

TIE SKETCH TIES OK 2-27-02-JG
OK, 9-18-07-JG
(Show at least four ties) OK 1-27-12 MS

NOTE: Ties in trees to nail in disc.

