

14
SECTION

17
TOWN

07
RANGE

ADAMS COUNTY

COUNTY CORNER NO: 71

ROMPORTOL ID: 41707140000

PUBLIC LAND SURVEY MONUMENT RECORD

TYPE OF MONUMENT: HARRISON (BROKEN-TOP)
ADAMS COUNTY COORDINATES, NAD 83 (2007)

N. 208417.724

E. 583715.486

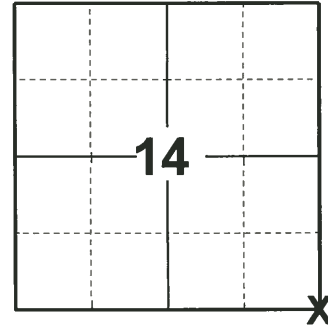
ELEVATION- - - DATUM - -

FIELD WORK DATE: 04/04/2019

BASIS FOR MONUMENT LOCATION

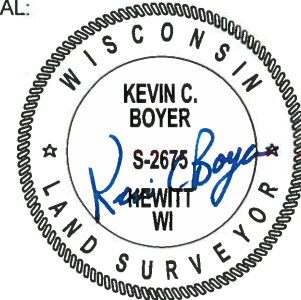
1976 - PLS 1103 RAN EDM TRANSIT TRAVERSE AROUND SECTIONS 22, 23, AND 24, AND PORTIONS OF ADJACENT SECTIONS. COULD FIND NO EVIDENCE OF THE ORIGINAL CORNER OR ANY REMONUMENTATION. SET CORNER BY PROPORTION BETWEEN THE NORTHEAST CORNER OF SECTION 24 AND THE NORTHWEST CORNER OF SECTION 23, AND PROPORTIONAL TO EXISTING POSSESSION LINES IN THE NORTH, SOUTH DIRECTION.

2019 - PLS 2675 FOUND HARRISON (BROKEN-TOP) 24" BELOW THE GROUND AND 2 WITNESSES. THE MONUMENT AGREES WITH BOTH WITNESSES. ACCEPTED THE HARRISON (BROKEN-TOP) AS THE CORNER LOCATION. SET 4 NEW TIES AND MEASURED TO THE EXISTING WITNESSES.



LOCATION
(INDICATE CORNER BY "X")

SEAL:

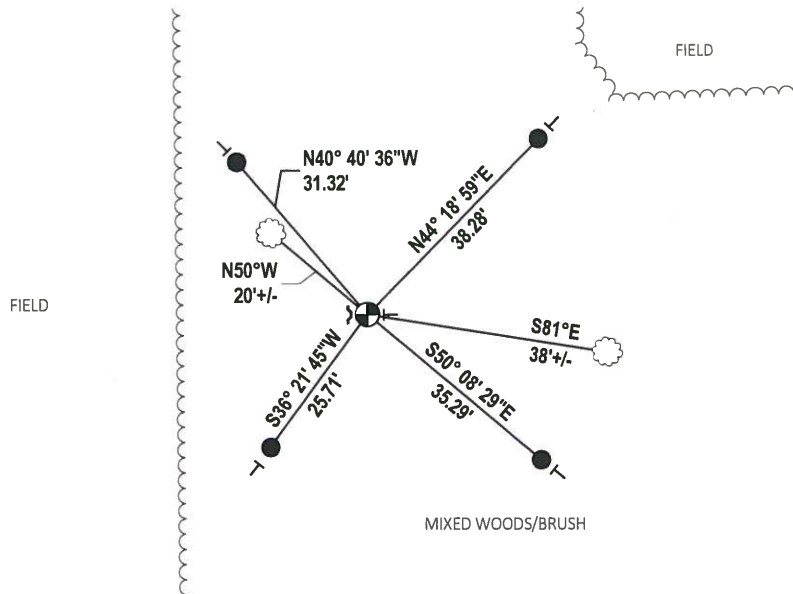


DATA SHOWN HERE ON THIS TIE SHEET IS CORRECT AND COMPLETE TO THE BEST OF MY KNOWLEDGE AND BELIEF.

PROFESSIONAL LAND SURVEYOR

DATE 5/1/19

- TIE SKETCH



- SET 3/4" x 18" IRON REBAR, 1.50#/FT
- ⊕ FOUND HARRISON (BROKEN-TOP) MONUMENT
- ┌ STEEL FENCE POST
- └ VINYL "T" POST
- ⊗ WITNESS TREE

ADAMS COUNTY

Survey Monument Record

TYPE OF MONUMENT: Standard Harrison

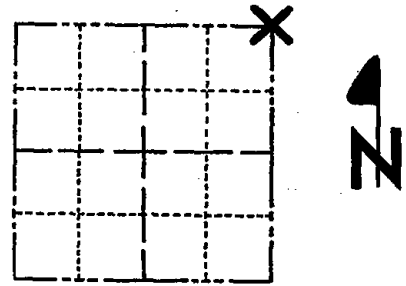
STATE PLANE COORDINATES: N _____
E _____

ELEVATION — M.S.L. DATUM: _____

THETA ANGLE: _____

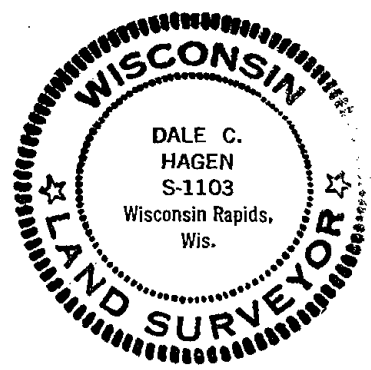
FIELD BOOK: _____ PAGE _____

CORNER NO. 933
SECTION 23
TOWN 17
RANGE 7



LOCATION
(Indicated by 'X')

SEAL:



BASIS FOR MONUMENT LOCATION

(Use reverse side if necessary)

Show info such as: History of corner, with reference to Vol. and pg, dates, surveyor; exact description of monument replaced; if location computed, by taped or EDM traverse; landowner remarks, etc.

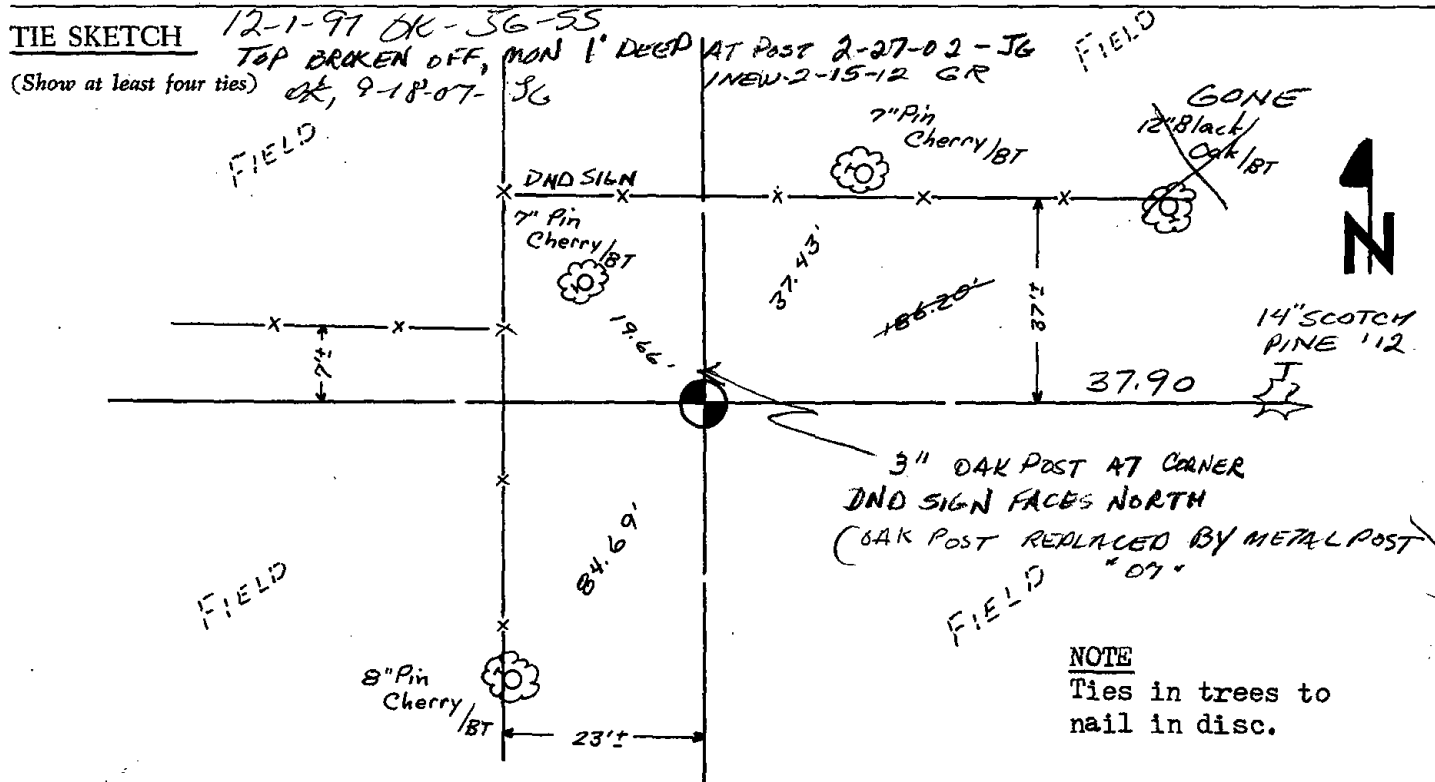
Ran EDM/transit traverse around Sections 22, 23 and 24, and portions of adjacent sections.

Could find no evidence of the original corner or any remonumentation.

Set corner by proration between the Northeast corner of Section 24 and the Northwest corner of Section 23, and proportional to existing possession lines in the North/South direction.

CORNER O.K. 3-28-77 GR-SS
TOP BROKEN - BOTTOM IN PLACE 10" BELOW SURFACE 8-17-92 PK-SS
TIES OK 3-18-97 SS
1-6-92 GR-JG OK

CERTIFIED CORRECT
Dale C. Hagen
Registered Land Surveyor
DATE: January 17, 1976



NOTE
Ties in trees to nail in disc.