

13
SECTION

17
TOWN

07
RANGE

ADAMS COUNTY

COUNTY CORNER NO: 72
ROMPORTOL ID: 41707130020

PUBLIC LAND SURVEY MONUMENT RECORD

TYPE OF MONUMENT: HARRISON
ADAMS COUNTY COORDINATES, NAD 83 (2007)

N. 208440.487

E. 586360.647

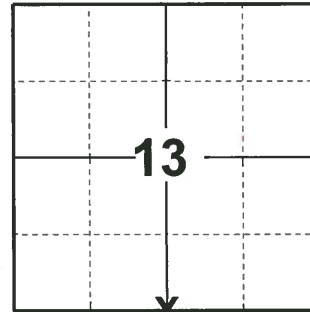
ELEVATION- - - DATUM - -

FIELD WORK DATE: 04/04/2019

BASIS FOR MONUMENT LOCATION

1976 - PLS 1103 RAN EDM/TRANSIT TRAVERSE AROUND SECTIONS 22, 23, AND 24, AND PORTIONS OF THE ADJACENT SECTIONS. COULD FIND NO EVIDENCE OF THE ORIGINAL CORNER OR ANY REMONUMENTATION. SET CORNER PROPORTIONALLY AND ON LINE BETWEEN THE ADJACENT SECTION CORNERS.

2019 - PLS 2675 FOUND HARRISON 6" ABOVE THE GROUND AND 2 WITNESSES. THE MONUMENT AGREES WITH BOTH WITNESSES. ACCEPTED THE HARRISON AS THE CORNER LOCATION. SET 4 NEW TIES AND MEASURED TO THE EXISTING WITNESSES.



LOCATION
(INDICATE CORNER BY "X")

SEAL:

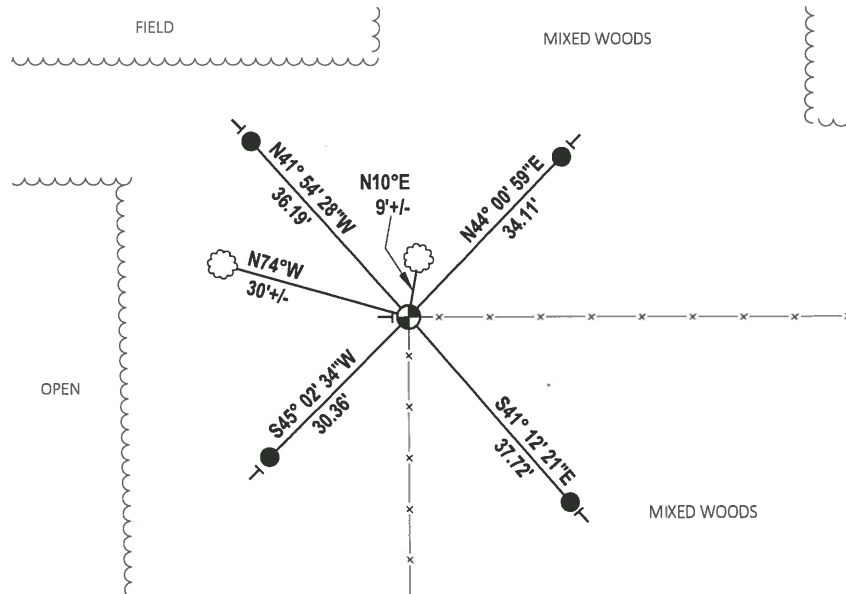


DATA SHOWN HERE ON THIS TIE SHEET IS CORRECT AND COMPLETE TO THE BEST OF MY KNOWLEDGE AND BELIEF.

PROFESSIONAL LAND SURVEYOR

DATE 5/1/19

- TIE SKETCH



- SET 3/4" x 18" IRON REBAR, 1.50#/FT
- ⊕ FOUND HARRISON MONUMENT
- VINYL "T" POST
- ☼ WITNESS TREE

ADAMS COUNTY

Survey Monument Record

TYPE OF MONUMENT: Harrison Monument

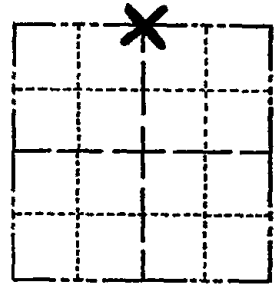
STATE PLANE COORDINATES: N _____
E _____

ELEVATION — M.S.L. DATUM: _____

THETA ANGLE: _____

FIELD BOOK: _____ PAGE _____

CORNER NO. 935
SECTION 24
TOWN 17
RANGE 7



LOCATION
(Indicated by 'X')

BASIS FOR MONUMENT LOCATION

(Use reverse side if necessary)

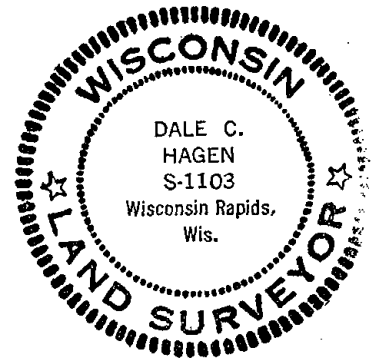
Show info such as: History of corner, with reference to Vol. and pg. dates, surveyor; exact description of monument replaced; if location computed, by taped or EDM traverse; landowner remarks, etc.

Ran EDM/transit traverse around Sections 22, 23 and 24, and portions of the adjacent sections.

Could find no evidence of the original corner or any remonumentation.

Set corner proportionally and on line between the adjacent section corners.

SEAL:



| | | | |
|--------|------|---------|-------|
| CORNER | O.K. | 3-28-77 | GR-55 |
| " | " | 6-11-82 | PK-55 |
| " | " | 3-18-87 | SS |
| " | " | 1-2-92 | GR-56 |

L-NEW, COR OK 2-19-97 JG-55

CERTIFIED CORRECT:

Dale C. Hagen
Registered Land Surveyor

DATE: January 17, 1976

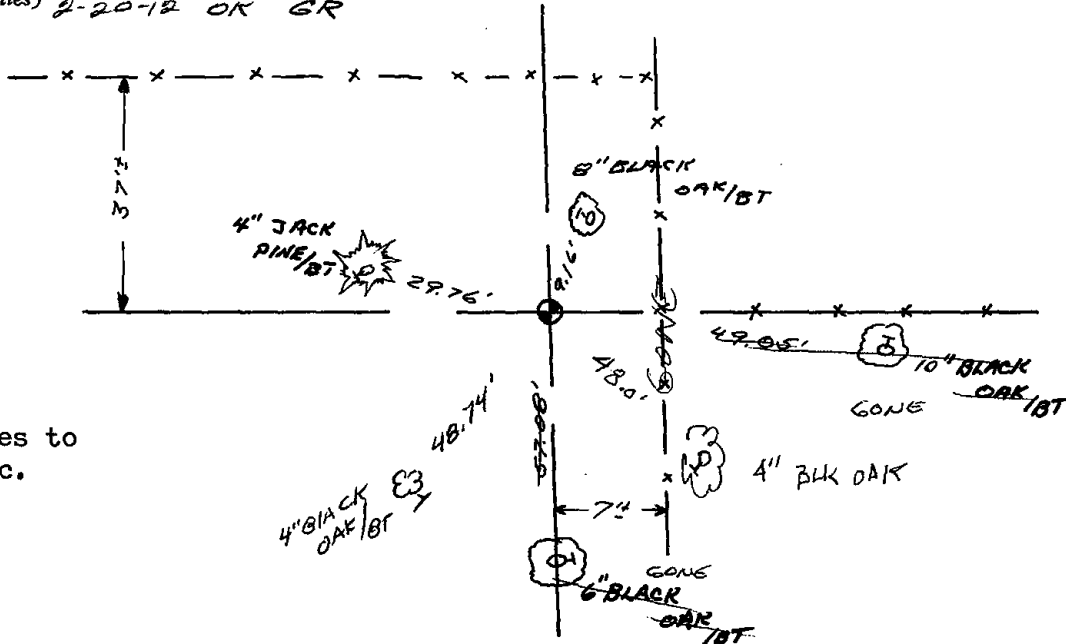
TIE SKETCH

OK 2-27-02 - JG

02/15/12 OK GR

OK, 9-18-07 - JG

(Show at least four ties) 2-20-12 OK GR



NOTE:

Ties in trees to nail in disc.