

PUBLIC LAND SURVEY MONUMENT RECORD

TYPE OF MONUMENT: HARRISON
 ADAMS COUNTY COORDINATES, NAD 83 (2007)

N. 205744.194

E. 573123.278

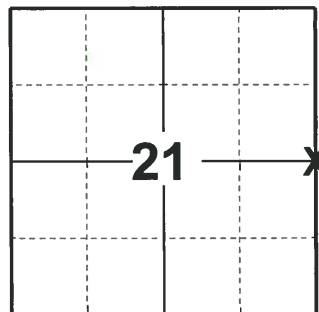
ELEVATION- _____ DATUM _____

FIELD WORK DATE: 04/16/2019

BASIS FOR MONUMENT LOCATION

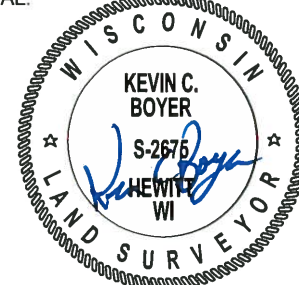
1975 - PLS 1103 RAN EDM/TRANSIT TRAVERSE AROUND SECTIONS 22, 23, AND 24 TO DETERMINE SEARCH AREAS. COULD FIND NO EVIDENCE OF THE ORIGINAL CORNER OR ANY SUBSEQUENT REMONUMENTATION. SET THE CORNER EQUIDISTANT AND ON LINE BETWEEN THE ADJACENT SECTION CORNERS.

2019 - PLS 2675 FOUND HARRISON FLUSH WITH THE GROUND AND DID NOT RECOVER ANY TIES OR WITNESSES. ACCEPTED THE HARRISON AS THE CORNER LOCATION AND SET 4 NEW TIES.



LOCATION
 (INDICATE CORNER BY "X")

SEAL:

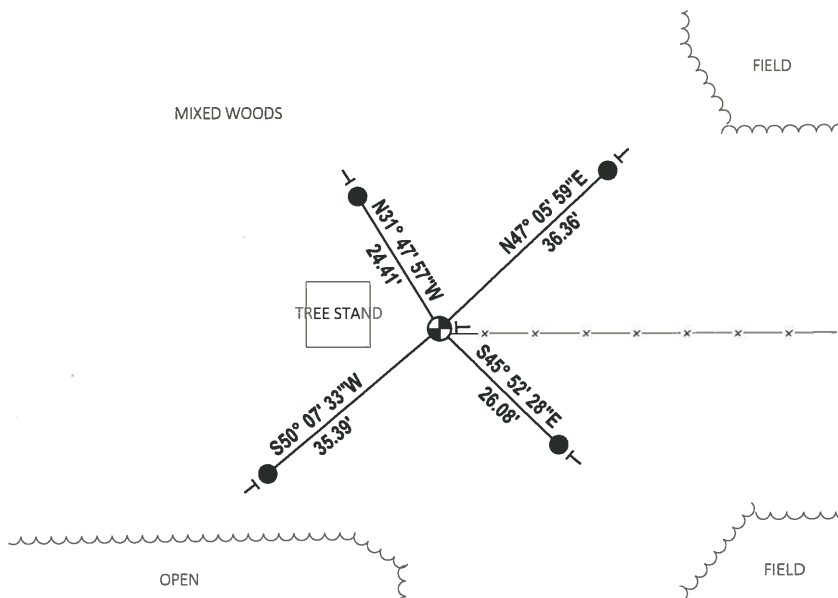


DATA SHOWN HERE ON THIS TIE SHEET IS CORRECT AND COMPLETE TO THE BEST OF MY KNOWLEDGE AND BELIEF.

PROFESSIONAL LAND SURVEYOR

DATE 5/1/19

TIE SKETCH



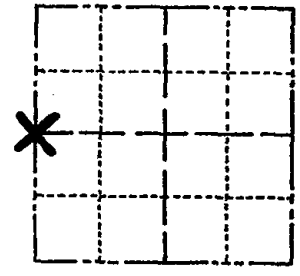
- SET 3/4" x 18" IRON REBAR, 1.50#/FT
- ⊕ FOUND HARRISON MONUMENT
- VINYL "T" POST

ADAMS COUNTY

Survey Monument Record

TYPE OF MONUMENT: Standard Harrison
STATE PLANE COORDINATES: N
E
ELEVATION - M.S.L. DATUM:
THETA ANGLE:
FIELD BOOK: PAGE

CORNER NO. 777
SECTION 22
TOWN 17
RANGE 7



LOCATION (Indicated by 'X')

SEAL:

BASIS FOR MONUMENT LOCATION

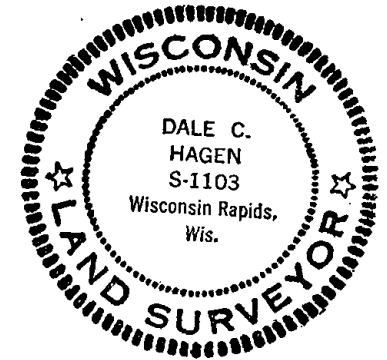
(Use reverse side if necessary)

Show info such as: History of corner, with reference to Vol. and pg, dates, surveyor; exact description of monument replaced; if location computed, by taped or EDM traverse; landowner remarks, etc.

Ran EDM/transit traverse around Sections 22, 23 and 24 to determine search areas.

Could find no evidence of the original corner or any subsequent remonumentation.

Set the corner equidistant and on line between the adjacent section corners.



CERTIFIED CORRECT:

Dale C Hagen
Registered Land Surveyor

DATE: August 7, 1975

Table with columns: CORNER, o.k., date, surveyor. Entries include 3-15-77 GR-55, 6-11-82 AK-55, 1-23-87 JL-55, 7-20-92 JG, 10-28-97 - JG, 2-07-02 - JG.

TIE SKETCH OK, 9-17-07 - JG

(Show at least four ties)

NOTE: Ties in trees to nail in disc.

