

24 SECTION 17 TOWN 07 RANGE

ADAMS COUNTY

COUNTY CORNER NO: 93
ROMPORTOL ID: 41707240000

PUBLIC LAND SURVEY MONUMENT RECORD

TYPE OF MONUMENT: HARRISON
ADAMS COUNTY COORDINATES, NAD 83 (2007)

N. 203180.459

E. 589043.361

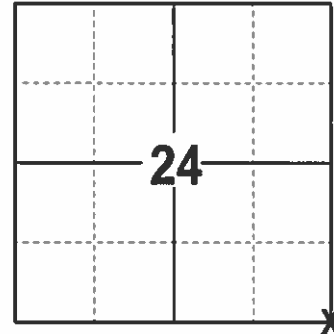
ELEVATION- DATUM

FIELD WORK DATE: 1/16/2017

BASIS FOR MONUMENT LOCATION

1975 - PLS 878 EXCAVATED AND FOUND THE BOTTOM 24 INCHES OF A 4 INCH DIAMETER POST. SET A HARRISON AND NOTED PART OF THE OLD POST REMAINS IN PLACE.

2017 - PLS 2994 FOUND EXISTING HARRISON 2 INCHES BELOW THE ROAD SURFACE AND ONE EXISTING TIE. THE HARRISON AGREES WITH THE EXISTING TIE. ACCEPTED HARRISON AND SET 3 NEW TIES.



LOCATION
(INDICATE CORNER BY "X")

SEAL:



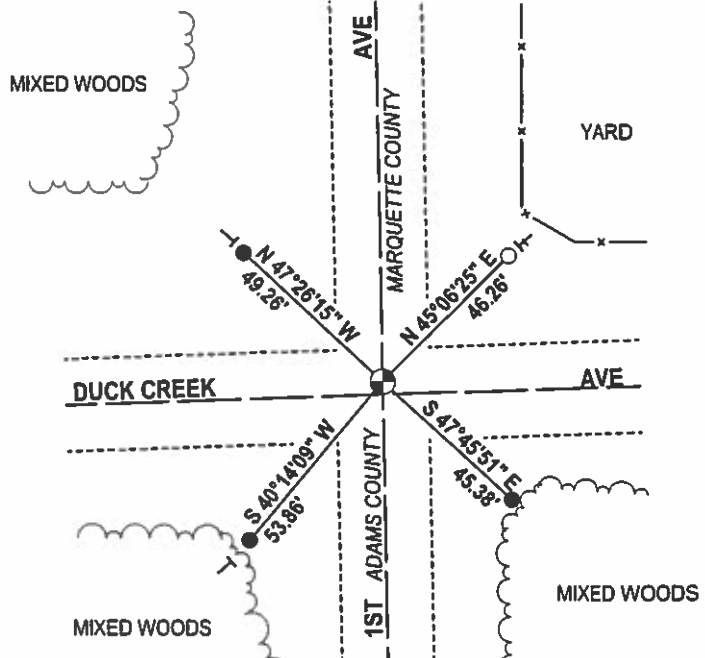
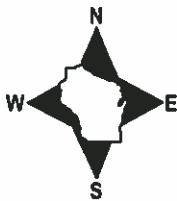
DATA SHOWN HERE ON THIS TIE SHEET IS CORRECT AND COMPLETE TO THE BEST OF MY KNOWLEDGE AND BELIEF.

PROFESSIONAL LAND SURVEYOR

DATE 3/7/17

TIE SKETCH

NOTE: THE CORNER FALLS 3' NORTH OF THE CENTERLINE OF DUCK CREEK AVE.



- 3/4" x 18" IRON REBAR SET, 1.50#/FT
- FOUND 1.25" OD IRON PIPE
- ⊙ FOUND HARRISON
- VINYL "T" POST

ADAMS COUNTY

Survey Monument Record

TYPE OF MONUMENT: Harrison standard

STATE PLANE COORDINATES: N _____
E _____

ELEVATION — M.S.L. DATUM: _____

THETA ANGLE: _____

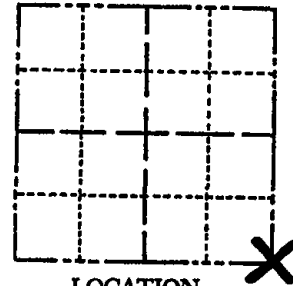
FIELD BOOK: 101 PAGE 4

CORNER NO. 806

SECTION 24

TOWN 17

RANGE 7



LOCATION
(Indicated by 'X')

SEAL:



CERTIFIED CORRECT:

Anthony B. Kiedrowski

Registered Land Surveyor

DATE: 7/27/75

BASIS FOR MONUMENT LOCATION

(Use reverse side if necessary)

Show info such as: History of corner, with reference to Vol. and pg, dates, surveyor; exact description of monument replaced; if location computed, by taped or EDM traverse; landowner remarks, etc.

Excavated with backhoe. Found bottom 24" of 4" dia wood post. Monumented this point. Part of the old post is still in place. Location verified by an EDM traverse of the entire section.

CORNER O.K. 3-28-77 GR-55
 " " 3-25-82 GR-55
) TIE GONG 1-22-87 JL-55
 CORNER OK 12-12-91 KZ-56

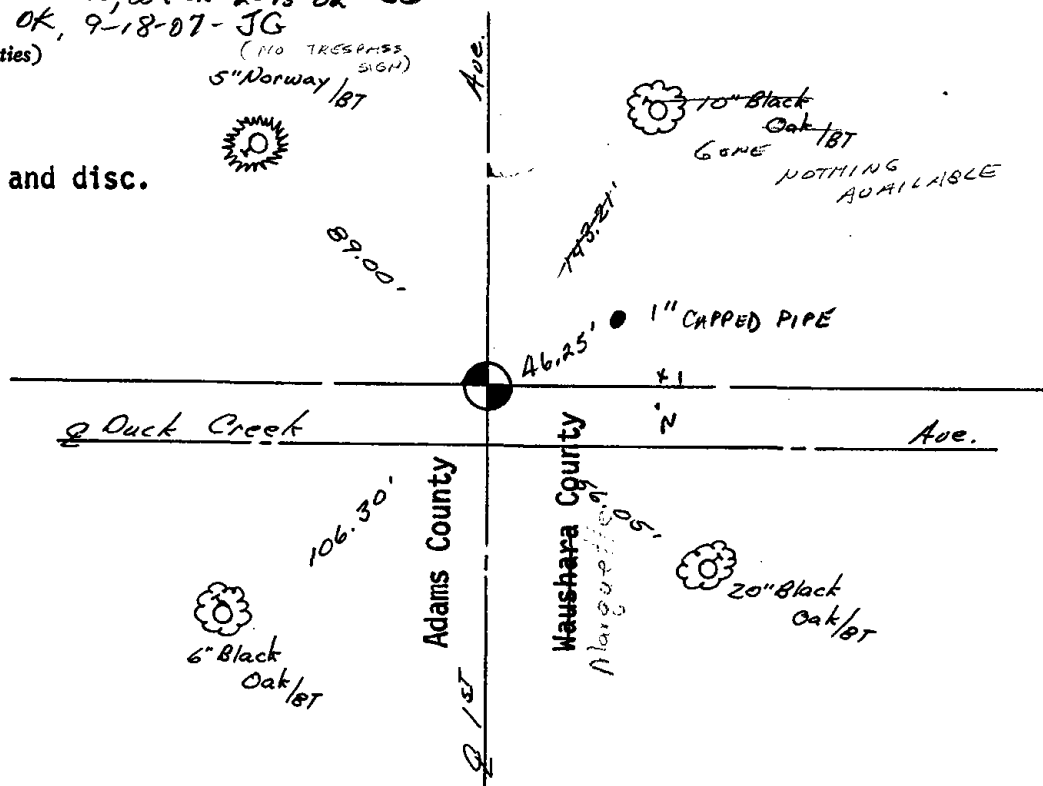
TIE SKETCH

(Show at least four ties)

1-NEW TIE, COR OK 2-13-02-JG
OK, 9-18-07-JG

(NO TRESPASS SIGN)
5" Norway 1BT

Ties to nail and disc.



1. The first part of the document discusses the importance of maintaining accurate records of all transactions. It emphasizes that this is crucial for the company's financial health and for providing reliable information to stakeholders.

2. The second part of the document outlines the specific procedures for recording transactions. It details the steps from identifying a transaction to entering it into the accounting system, ensuring that all necessary details are captured.

3. The third part of the document addresses the role of the accounting department in monitoring and controlling the company's resources. It discusses how accurate records enable the company to identify areas of inefficiency and to take corrective action.

4. The fourth part of the document discusses the importance of regular audits. It explains that audits help to ensure the accuracy and integrity of the company's financial records and provide an opportunity to identify and address any discrepancies.

5. The fifth part of the document discusses the importance of maintaining up-to-date financial statements. It explains that these statements provide a clear picture of the company's financial performance and are essential for making informed decisions.

6. The sixth part of the document discusses the importance of maintaining accurate records of all transactions. It emphasizes that this is crucial for the company's financial health and for providing reliable information to stakeholders.

7. The seventh part of the document outlines the specific procedures for recording transactions. It details the steps from identifying a transaction to entering it into the accounting system, ensuring that all necessary details are captured.

8. The eighth part of the document addresses the role of the accounting department in monitoring and controlling the company's resources. It discusses how accurate records enable the company to identify areas of inefficiency and to take corrective action.

9. The ninth part of the document discusses the importance of regular audits. It explains that audits help to ensure the accuracy and integrity of the company's financial records and provide an opportunity to identify and address any discrepancies.

10. The tenth part of the document discusses the importance of maintaining up-to-date financial statements. It explains that these statements provide a clear picture of the company's financial performance and are essential for making informed decisions.

11. The eleventh part of the document discusses the importance of maintaining accurate records of all transactions. It emphasizes that this is crucial for the company's financial health and for providing reliable information to stakeholders.

12. The twelfth part of the document outlines the specific procedures for recording transactions. It details the steps from identifying a transaction to entering it into the accounting system, ensuring that all necessary details are captured.

13. The thirteenth part of the document addresses the role of the accounting department in monitoring and controlling the company's resources. It discusses how accurate records enable the company to identify areas of inefficiency and to take corrective action.

14. The fourteenth part of the document discusses the importance of regular audits. It explains that audits help to ensure the accuracy and integrity of the company's financial records and provide an opportunity to identify and address any discrepancies.

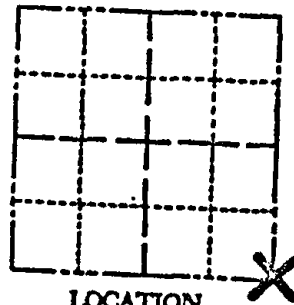
15. The fifteenth part of the document discusses the importance of maintaining up-to-date financial statements. It explains that these statements provide a clear picture of the company's financial performance and are essential for making informed decisions.

ADAMS COUNTY

Survey Monument Record

TYPE OF MONUMENT: Harrison standard
STATE PLANE COORDINATES: N _____
E _____
ELEVATION - M.S.L. DATUM: _____
THETA ANGLE: _____
FIELD BOOK: 101 PAGE 4

CORNER NO. 806
SECTION 24
TOWN 17
RANGE 7



LOCATION
(Indicated by 'X')

BASIS FOR MONUMENT LOCATION

(Use reverse side if necessary)

Show info such as: History of corner, with reference to Vol. and pg. dates, surveyor; exact description of monument replaced; if location computed, by taped or EDM traverse; landowner remarks, etc.

Excavated with backhoe. Found bottom 24" of 4" dia wood post. Monumented this point. Part of the old post is still in place. Location verified by an EDM traverse of the entire section.

SEAL:



CORNER 31 3-28-77 GR-55
" " 3-25-82 GR-55

Oct 13 '86 Ken Carlson ✓

CERTIFIED CORRECT:

Anthony B. Kiedrowski
Registered Land Surveyor
DATE: 11/17/75

TIE SKETCH

(Show at least four ties)

Ties to nail and disc.

