

PUBLIC LAND SURVEY MONUMENT RECORD

TYPE OF MONUMENT: HARRISON (BROKEN-TOP)
 ADAMS COUNTY COORDINATES, NAD 83 (2007)

N. 200481.900

E. 562632.182

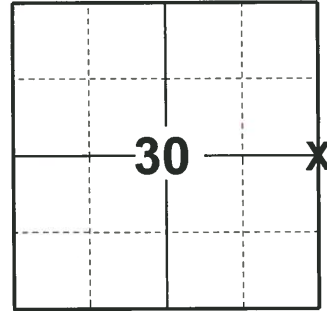
ELEVATION- - - - - DATUM - - - - -

FIELD WORK DATE: 04/23/2019

BASIS FOR MONUMENT LOCATION

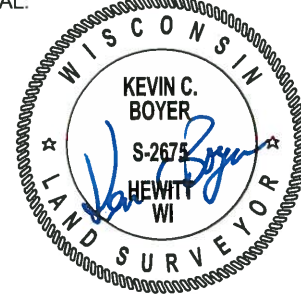
1982 - PLS 878 NO RECORD OF ANY RESURVEYS. EXCAVATED WITH BACKHOE, FOUND STAIN FROM DUG-IN POST 6" SOUTH OF REMNANT OF VERY ROTTED 3" DIAMETER POST. SET HARRISON MONUMENT AT THE LOCATION OF THE 3" POST. THIS CORNER IS IN LINE WITH VERY OLD FENCE REMNANTS TO THE WEST AND A SOME WHAT NEWER AND MAINTAINED FENCE TO THE EAST.

2019 - PLS 2675 FOUND HARRISON (BROKEN-TOP) 12" BELOW THE ROAD SURFACE AND 3 WITNESSES. THE MONUMENT AGREES WITH ALL 3 WITNESSES. ACCEPTED THE HARRISON (BROKEN-TOP) AS THE CORNER LOCATION. SET 4 NEW TIES AND MEASURED TO THE EXISTING WITNESSES.



LOCATION
 (INDICATE CORNER BY "X")

SEAL:



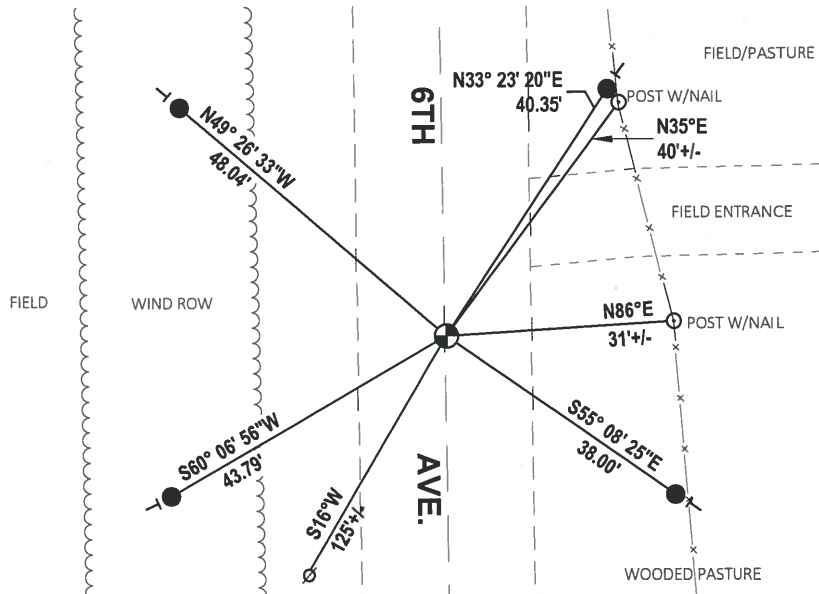
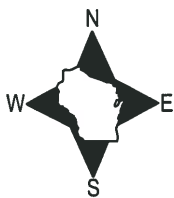
DATA SHOWN HERE ON THIS TIE SHEET IS CORRECT AND COMPLETE TO THE BEST OF MY KNOWLEDGE AND BELIEF.

PROFESSIONAL LAND SURVEYOR

DATE 5/1/19

- TIE SKETCH

NOTE: THE CORNER LANDS 0.5± EAST OF 6TH AVE. CENTERLINE.

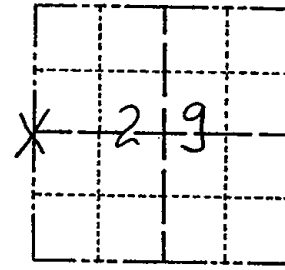


- SET 3/4" x 18" IRON REBAR, 1.50#/FT
- ⊕ FOUND HARRISON (BROKEN-TOP) MONUMENT
- ∅ WITNESS POWER POLE
- | VINYL "T" POST

Government Land Corner Certificate

ADAMS County
 TYPE OF MONUMENT: HARRISON
 STATE PLANE COORDINATES: N _____
 E _____
 ELEVATION — M.S.L. DATUM: _____
 THETA ANGLE: _____
 FIELD BOOK: (102) PAGE (23)
 DRAWN BY: S.J.H.

CORNER NO. 95
 SECTION 29
 TOWN 17
 RANGE 7



LOCATION
 (Indicated by 'X')

BASIS FOR MONUMENT LOCATION

Show info such as: History of corner, with reference to Vol. and pg., dates, surveyor; exact description of monument replaced; if location computed, by taped or EDM traverse; landowner remarks, etc. (Use reverse side if necessary)

No record of any resurveys. Excavated with backhoe, found stain from dug-in post 6" South of remnant of very rotted 3" diameter post. Set Harrison Monument at the location of 3" post. This corner is in line with very old fence remnants to the West and a somewhat newer and maintained fence to the East.

SEAL:



DATA SHOWN HERE ON
 CERTIFIED CORRECT:

Anthony B. Kiedrowski
 Registered Land Surveyor

DATE: 5-7-82

TIE SKETCH

Show at least four ties, also fence lines, roads, topo, size and type of witness trees and if off road - best way to arrive at corner.

